

TOWNSHIP 24 SOUTH, RANGE 7 WEST, OF THE WILLAMETTE MERIDIAN, OREGON

DEPENDENT RESURVEY AND SUBDIVISION OF SECTIONS

FILED
 Date: 8/31/2011 By: JC
 This survey consists of:
 Map: VOL. 57
 Narrative: PAGES
 Corner Rpt: 22362-86
 DOUGLAS COUNTY
 SURVEYOR

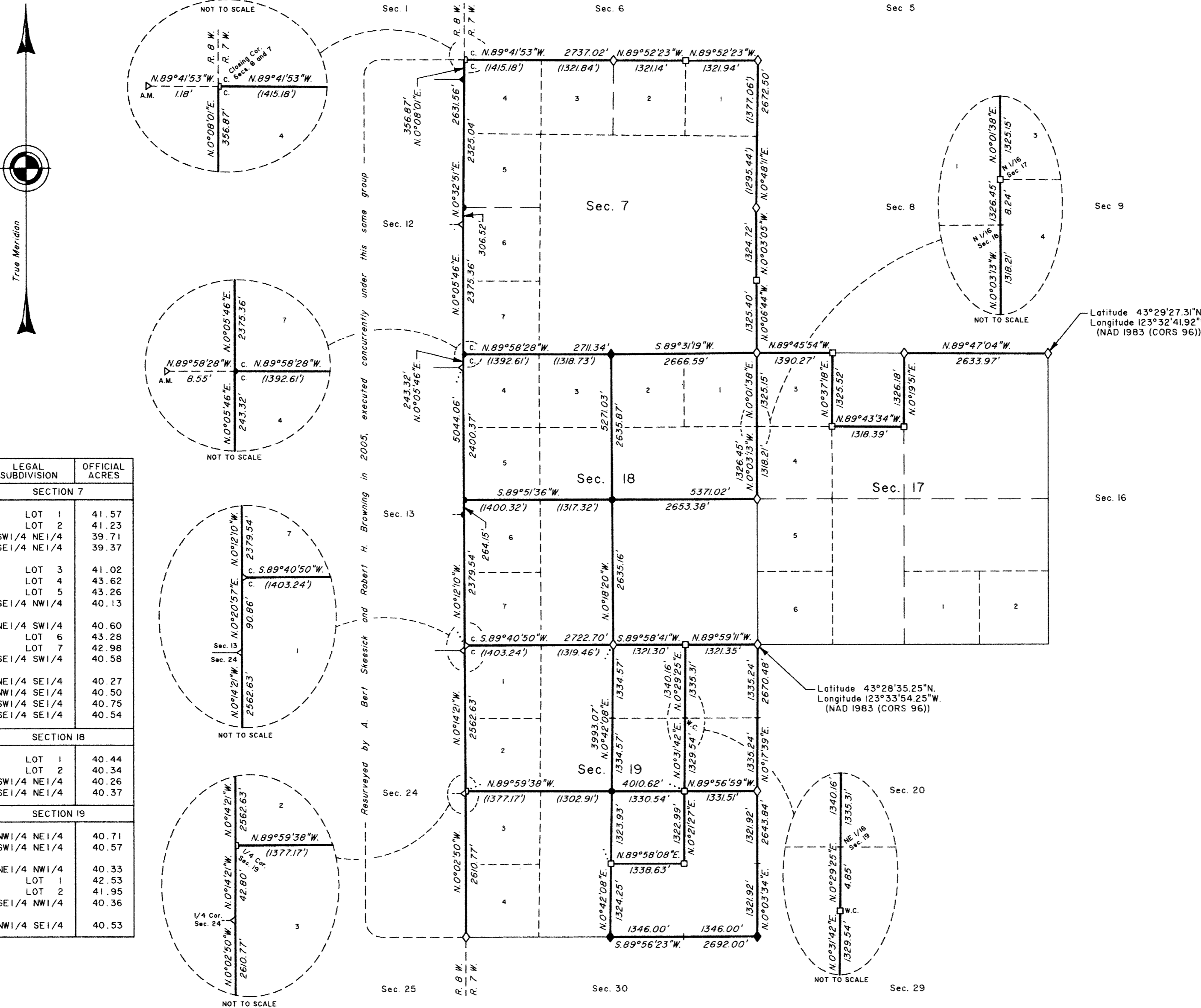
A history of surveys is contained in the field notes.

This plat represents a dependent resurvey of a portion of the subdivision lines and subdivision-of-section lines of section 17, T. 24 S., R. 7 W., Willamette Meridian, Oregon, designed to restore the corners in their true original locations according to the best available evidence, and the subdivision of sections 18 and 19.

Actual quantity acreages have been returned for federal interest lands where indicated. The aliquot parts and lots will retain their designation even though the official acreage has changed. The aliquot part of a section will continue to be subdivided by legal subdivision in accordance with the Manual. When an area has been assigned a lot number, it may be further subdivided only by a supplemental plat or another official survey. The official lottings and areas of federal interest lands not affected by this survey are as shown on the plats approved April 24, 1858, and January 27, 1895.

The survey was executed by A. Bert Skeesick, Cadastral Surveyor, and Robert H. Browning, Surveying Technician, beginning July 6, 2005, and completed January 3, 2006, pursuant to Special Instructions dated March 30, 2005, under Group Number 2104, Oregon.

The lightweight section lines of section 17 shown were surveyed by James E. Jelley in 1975-76.



LEGAL SUBDIVISION	OFFICIAL ACRES
SECTION 7	
LOT 1	41.57
LOT 2	41.23
SW 1/4 NE 1/4	39.71
SE 1/4 NE 1/4	39.37
LOT 3	41.02
LOT 4	43.62
LOT 5	43.26
SE 1/4 NW 1/4	40.13
NE 1/4 SW 1/4	40.60
LOT 6	43.28
LOT 7	42.98
SE 1/4 SW 1/4	40.58
NE 1/4 SE 1/4	40.27
NW 1/4 SE 1/4	40.50
SW 1/4 SE 1/4	40.75
SE 1/4 SE 1/4	40.54
SECTION 18	
LOT 1	40.44
LOT 2	40.34
SW 1/4 NE 1/4	40.26
SE 1/4 NE 1/4	40.37
SECTION 19	
NW 1/4 NE 1/4	40.71
SW 1/4 NE 1/4	40.57
NE 1/4 NW 1/4	40.33
LOT 1	42.53
LOT 2	41.95
SE 1/4 NW 1/4	40.36
NW 1/4 SE 1/4	40.53

LEGEND

- ◊ Original corner previously remonumented
- ◆ Original corner remonumented this survey
- Corner previously established or reestablished
- Corner established or reestablished this survey
- + Corner point calculated, no monument set

UNITED STATES DEPARTMENT OF THE INTERIOR
 BUREAU OF LAND MANAGEMENT
 Portland, Oregon

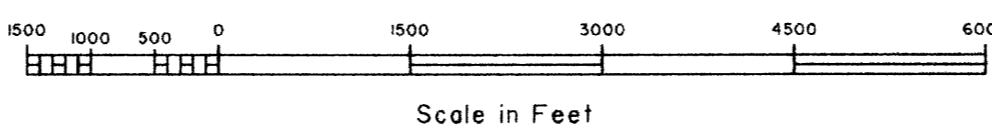
This plat is strictly conformable to the approved field notes, and the survey, having been correctly executed in accordance with the requirements of law and the regulations of this Bureau, is hereby accepted.

For the Director

Mary J. M. Hunt

Chief Cadastral Surveyor of Oregon

June 23, 2011
 Date



OFFICIALLY FILED: 8/12/2011