

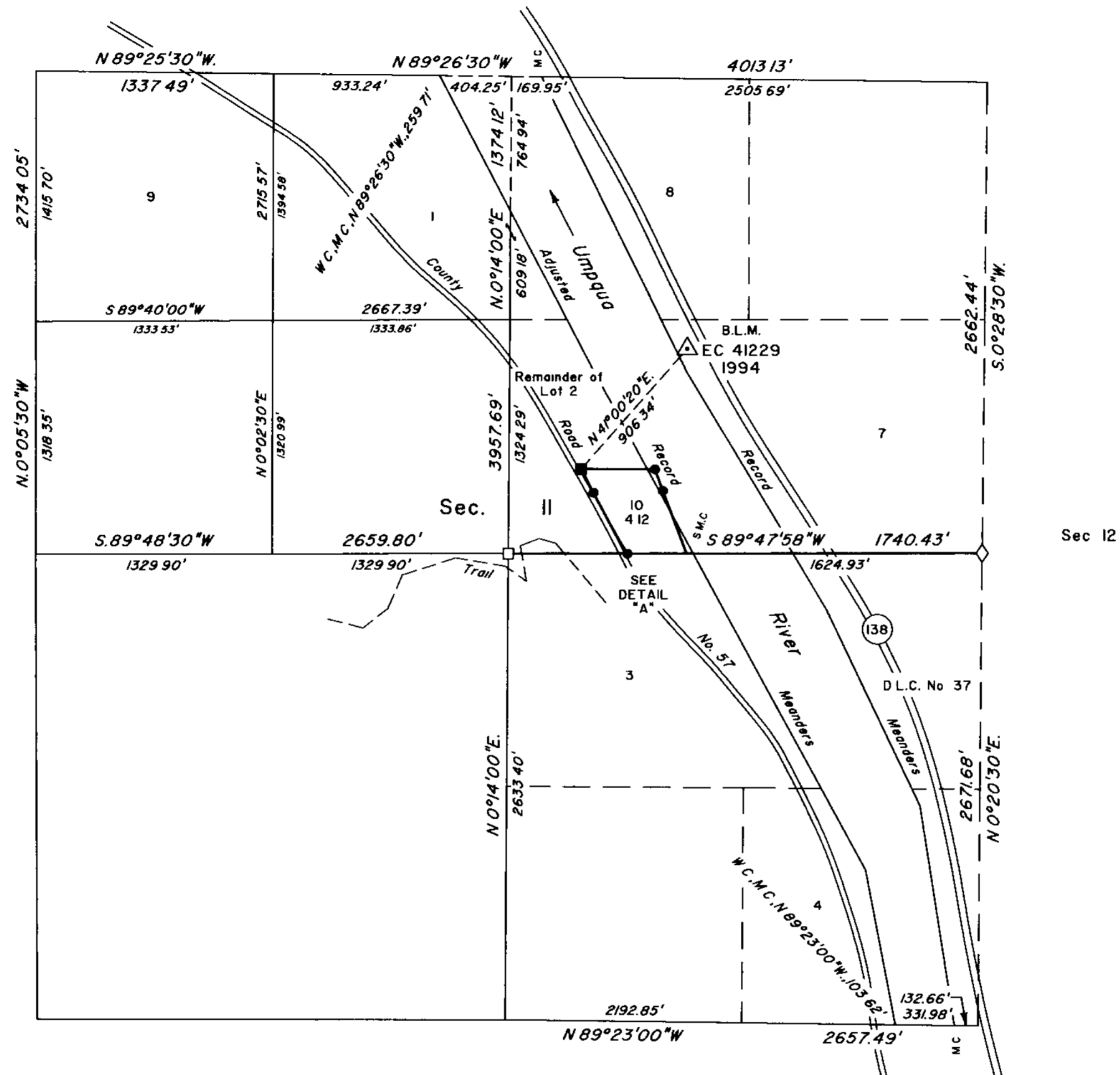
# TOWNSHIP 24 SOUTH, RANGE 7 WEST, OF THE WILLAMETTE MERIDIAN, OREGON

## DEPENDENT RESURVEY AND SURVEY

FILED

Date: 10-4-2000 By: JC  
 This survey consists of:  
 Map:  
 Narrative: Vol 53 Pages  
 Corner Rpt: 20436-20445

DOUGLAS COUNTY  
 SURVEYOR



A history of surveys is contained in the field notes.

This plat represents a dependent resurvey of a portion of the subdivisional lines of section II, T 24 S, R. 7 W, Willamette Meridian, Oregon, designed to restore the corners in their true original locations according to the best available evidence, and the metes-and-bounds survey of the boundaries of lot 10 in section II.

Measured distances and directions have been adjusted by Cadastral Measurement Management (CMM), computer software that incorporates a least squares adjustment routine. The adjusted bearings and distances are reported to the nearest second and 0.01 foot.

Except as shown hereon, the lottings and areas are as shown on the plat approved April 28, 1858, and October 22, 1860, and the plat accepted June 2, 1997.

The survey was executed by Wayne L. Rogers and A Bert Skeesick, Cadastral Surveyors, and Robert H Browning, Surveying Technician, beginning May 6, 1998, and completed January 26, 2000, pursuant to Special Instructions dated April 22, 1998, under Group Number 1878, Oregon.

Timber in this area consists of fir, cedar, hemlock, yew, alder, myrtle, maple, oak, madrone, willow, ash, cottonwood, and chinquapin.

The tie to the geodetic control station is reported as mean bearing and sea level distance.

The lightweight lines were resurveyed by Dale T Bedell in 1994-95.

### LEGEND

- ◊ Original corner previously remonumented
- Corner previously established or reestablished
- Corner previously established or reestablished; remonumented this survey
- Corner established or reestablished this survey

UNITED STATES DEPARTMENT OF THE INTERIOR  
 BUREAU OF LAND MANAGEMENT

Portland, Oregon June 16, 2000

This plat is strictly conformable to the approved field notes, and the survey, having been correctly executed in accordance with the requirements of law and the regulations of this Bureau, is hereby accepted

For the Director

*Wayne M. Gardner*  
 Chief Cadastral Surveyor of Oregon

