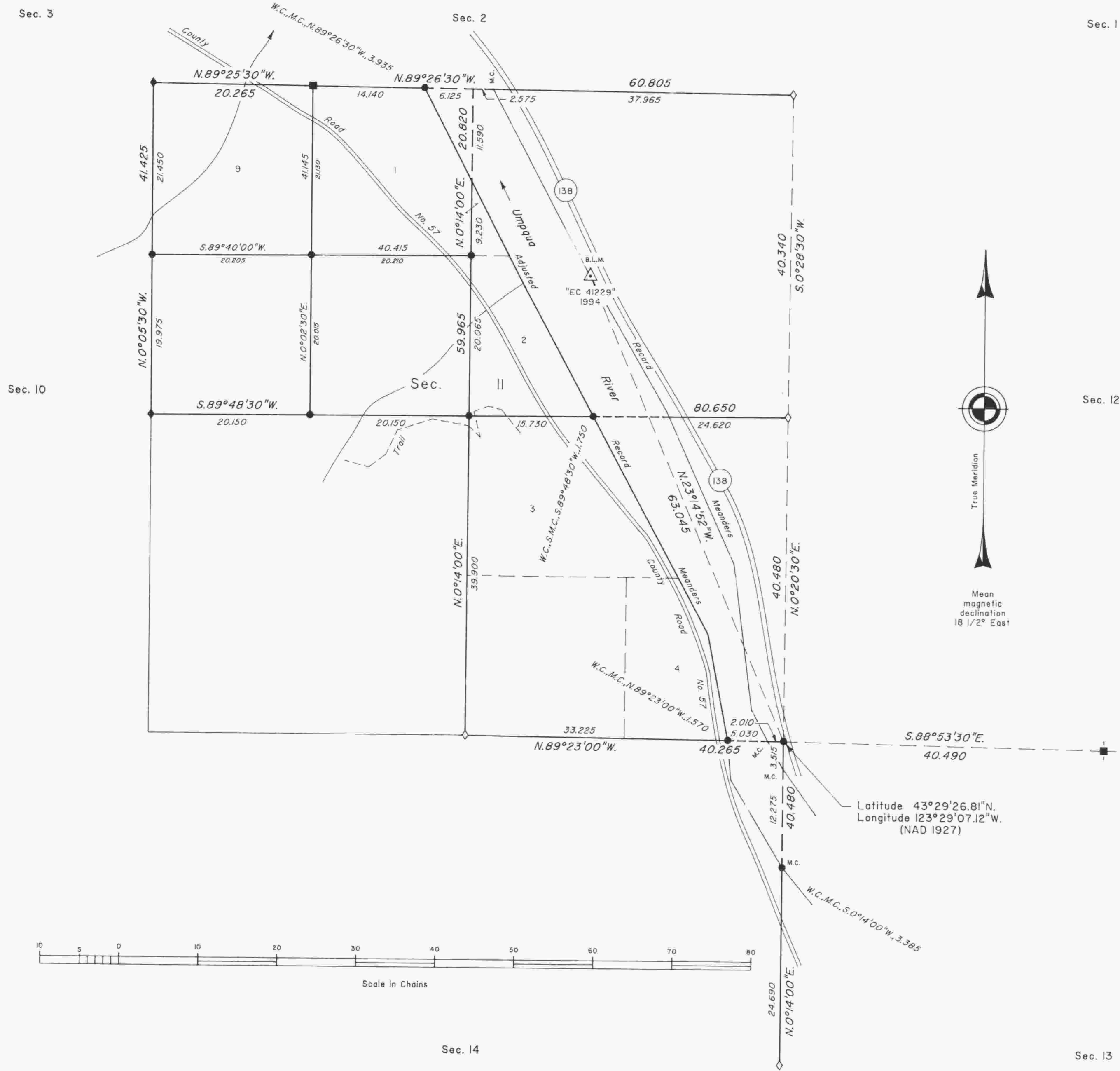


# TOWNSHIP 24 SOUTH, RANGE 7 WEST, OF THE WILLAMETTE MERIDIAN, OREGON

## DEPENDENT RESURVEY AND SUBDIVISION OF SECTION II



A history of surveys is contained in the field notes.

This plat represents a dependent resurvey of a portion of the subdivisional lines, and adjusted record meanders of the left bank of the Umpqua River in section II, T. 24 S., R. 7 W., Willamette Meridian, Oregon, designed to restore the corners in their true original locations according to the best available evidence, and the subdivision of section II.

The lottings and areas are as shown on the plat approved April 24, 1858 and June 27, 1895.

The survey was executed by Dale T. Bedell, Cadastral Surveyor, beginning May 9, 1994, and completed April 12, 1995, pursuant to Special Instructions dated April 14, 1994, under Group Number 1728, Oregon.

Timber in this area consists of fir, cedar, hemlock, yew, alder, myrtle, maple, oak, madrone, willow, ash, cottonwood, and chinquapin.

The tie to the geodetic control station is reported as mean bearing and sea level distance.

LEGEND	
◇	Original corner previously remonumented
◆	Original corner remonumented this survey
□	Corner previously established or reestablished
■	Corner previously established or reestablished; remonumented this survey
●	Corner established or reestablished this survey

UNITED STATES DEPARTMENT OF THE INTERIOR  
BUREAU OF LAND MANAGEMENT

Portland, Oregon June 2, 1997

This plat is strictly conformable to the approved field notes, and the survey, having been correctly executed in accordance with the requirements of law and the regulations of this Bureau, is hereby accepted.

For the Director  
*Wayne M. Gardner*  
Chief Cadastral Surveyor of Oregon

