
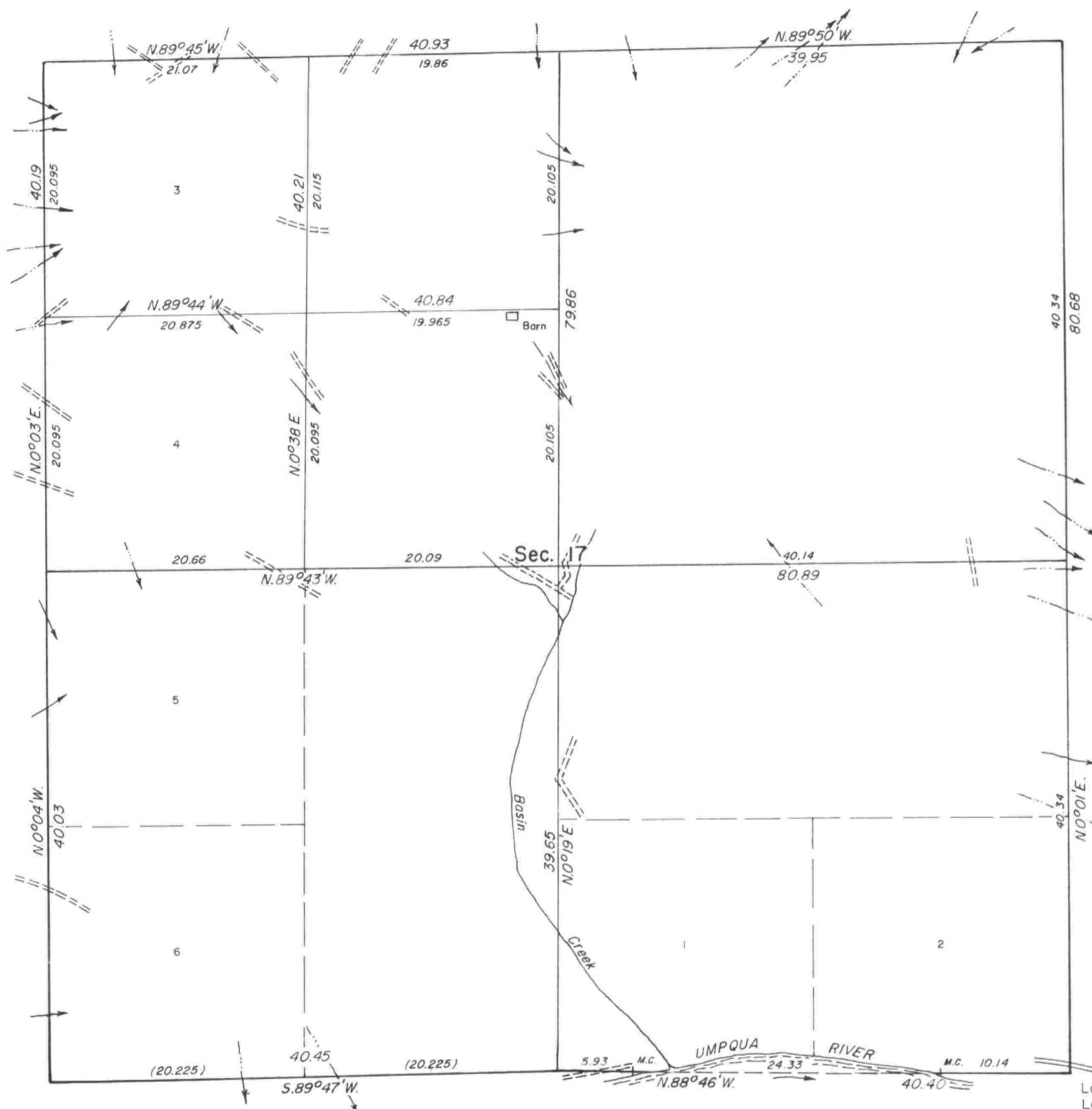


TOWNSHIP 24 SOUTH, RANGE 7 WEST, OF THE WILLAMETTE MERIDIAN, OREGON.

DEPENDENT RESURVEY AND SUBDIVISION OF SECTION 17


 True Meridian
 Mean magnetic
 declination
 18° 30' E.



A history of surveys is contained in the field notes.

This plat represents a dependent resurvey of a portion of the subdivisional lines, T. 24 S., R. 7 W., Willamette Meridian, Oregon, designed to restore the corners in their true original locations according to the best available evidence.

The lottings and areas are as shown on the plats approved April 24, 1858; October 22, 1860; and June 27, 1895.

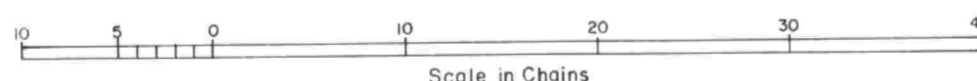
Survey executed by James E. Jelley, Cadastral Surveyor, from October 7, 1975, to April 21, 1976, under Special Instructions dated September 25, 1975, which provided for the surveys included under Group No. 889, Oregon.

UNITED STATES DEPARTMENT OF THE INTERIOR
BUREAU OF LAND MANAGEMENT
Denver, Colorado January 28, 1980

This plat is strictly conformable to the approved field notes, and the survey, having been correctly executed in accordance with the requirements of law and the regulations of this Bureau, is hereby accepted.

For the Director

Chief, Cadastral Survey
Examination and Approval Staff



Timber in this area consists of fir, hemlock, cedar, oak, maple, alder, madrone, myrtle, and chinquapin.

GEE

L.D.G.