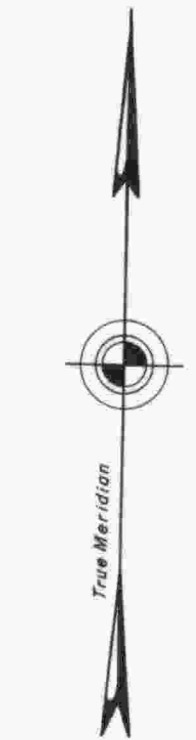
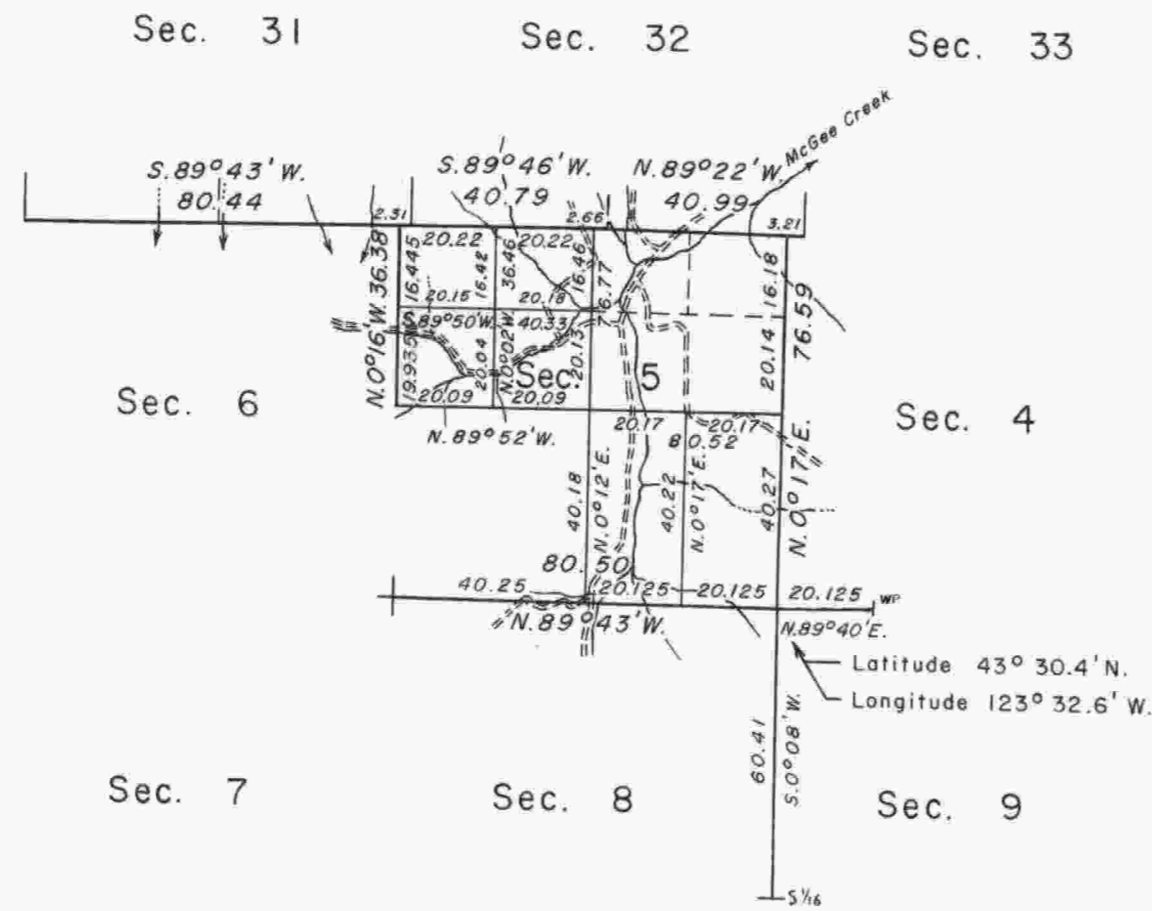


# TOWNSHIP 24 SOUTH, RANGE 7 WEST, OF THE WILLAMETTE MERIDIAN, OREGON.

DEPENDENT RESURVEY AND SUBDIVISION



Mean  
Magnetic  
Declination  
19°12' East

This plat represents a retracement and reestablishment of a portion of the south boundary of T. 23 S., R. 7 W., and a portion of the subdivisional lines of T. 24 S., R. 7 W., designed to restore the corners in their true original locations according to the best available evidence. The lottings and areas are as shown on the plats approved April 24, 1858, and June 27, 1895.

The west four miles of the north boundary were surveyed by Thomas H. Hutchinson and Ambrose N. Armstrong, in 1857. A portion of the subdivisional lines were surveyed by Denise Hathorn, in 1857. The remaining subdivisional lines were completed by Williams R. Whipple, in 1893.

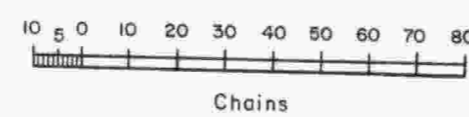
These surveys were executed by C. Albert White and Donald R. Beck, June 14 to October 3, 1963, under Special Instructions dated June 12, 1963, for Group No. 515, Oregon.

UNITED STATES DEPARTMENT OF THE INTERIOR  
BUREAU OF LAND MANAGEMENT  
Washington, D. C. April 22, 1965

This plat is strictly conformable to the approved field notes, and the survey, having been correctly executed in accordance with the requirements of law and the regulations of this Bureau, is hereby accepted.

For the Director

Chief, Division of Engineering



Area resurveyed: 450.82 Acres

Timber in this area consists of Douglas fir, hemlock, cedar, maple, madrone, chinquapin, alder, dogwood, myrtle, oak, and yew.