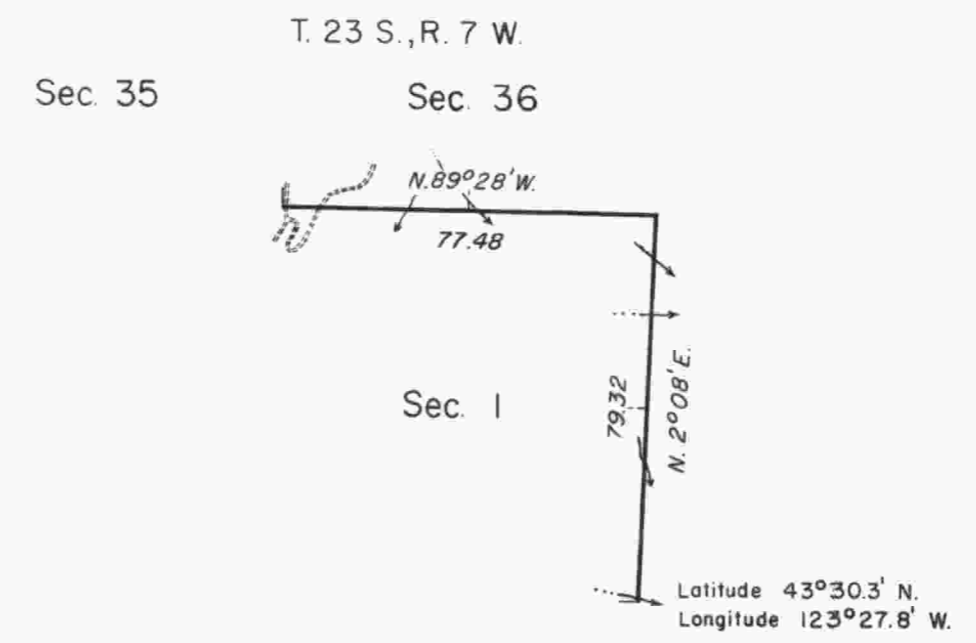


TOWNSHIP 24 SOUTH, RANGE 7 WEST, OF THE WILLAMETTE MERIDIAN, OREGON.
DEPENDENT RESURVEY



Sec. 12

This plat represents a retracement and reestablishment of a portion of the east boundary of T. 24 S., R. 7 W., and a portion of the south boundary of T. 23 S., R. 7 W., Willamette Meridian, Oregon, designed to restore the corners in their true original locations according to the best available evidence.

A portion of the east boundary of T. 24 S., R. 7 W., and a portion of the south boundary of T. 23 S., R. 7 W., were resurveyed by Orville N. Eggen in 1957.

Dependent resurvey of a portion of the east boundary of T. 24 S., R. 7 W., and a portion of the south boundary of T. 23 S., R. 7 W., Willamette Meridian, Oregon, executed by Floyd A. Brooks, April 23 to April 30, 1964, under Supplemental Special Instructions dated April 8, 1964, which provide for the surveys included under Group No. 244, Oregon.

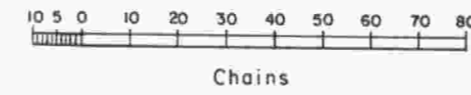


UNITED STATES DEPARTMENT OF THE INTERIOR
BUREAU OF LAND MANAGEMENT
Washington, D. C. February 16, 1965

This plat is strictly conformable to the approved field notes, and the survey, having been correctly executed in accordance with the requirements of law and the regulations of this Bureau, is hereby accepted.

For the Director

Chief, Division of Engineering



Timber in this area consists of Douglas fir, hemlock, and red cedar.

"Suspended February 6, 1992, see file 9632 (OR942)"
"Suspension Lifted, January 24, 1996, File 9632 (OR957).
Refer to plat accepted October 17, 1995."