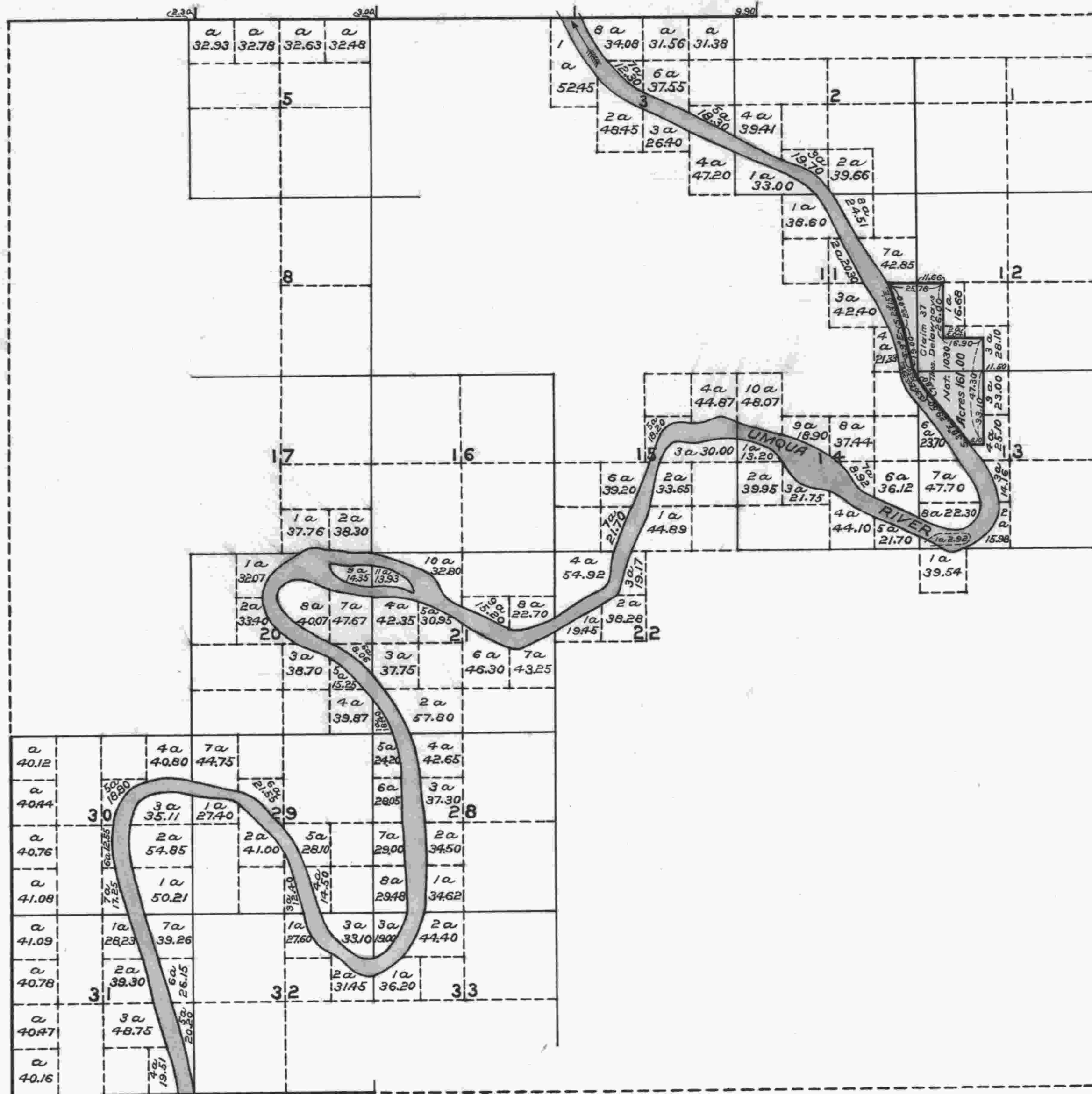


TOWNSHIP N° 24 SOUTH RANGE N° 7 WEST WILLAMETTE MERIDIAN OREGON



Aggregate Area of Public lands	9,788.15
" Private Surveys	161.00
Deduct error in computation	2.03
Total return on Township plat	9,947.12

The above Map of the survey of Claims in Township No. 24 South Range No. 7 West of the Willamette Meridian Oregon is strictly conformable to the field notes of the surveys thereof on file in this Office, which have been examined and approved.

Surveyor General's Office
Eugene City, October 22nd, 1860

(Signed)

W. W. Chapman
Surveyor General of Oregon.

Public Survey Office,
Portland, Oregon,
January 9, 1930.

I certify the above to be a correct
copy of the original plat on file in
this office.

Joseph A. Lauring
Office Cadastral Engineer.