

TOWNSHIP 24 SOUTH, RANGE 6 WEST, OF THE WILLAMETTE MERIDIAN, OREGON

DEPENDENT RESURVEY

Date: 4/7/2022 By: JC
This survey consists of:
Map: T24-6W 2021-1
Line: VOL. 59
Notes: 23972-23985

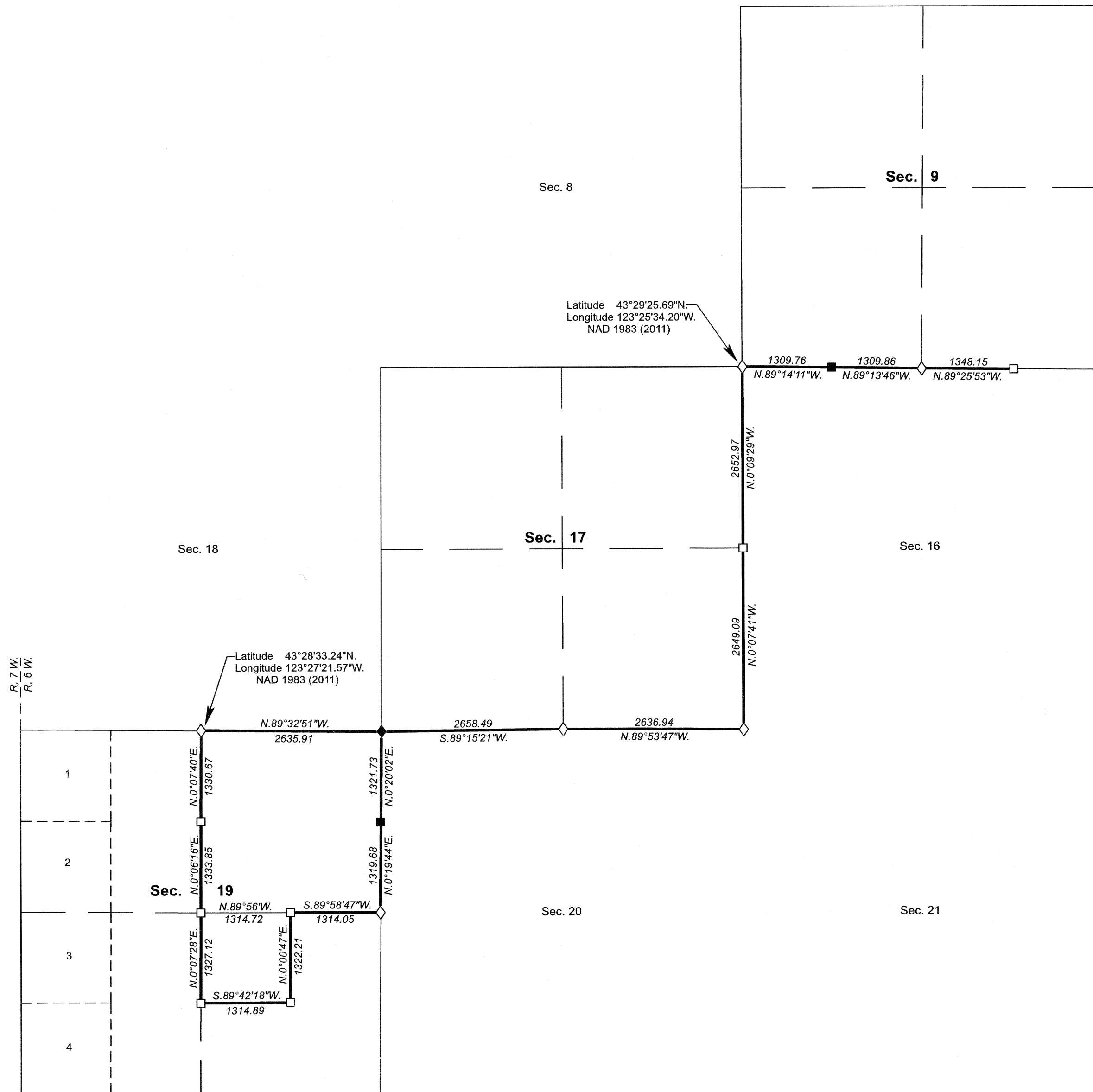
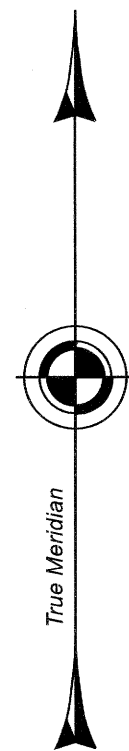
DOUGLAS COUNTY
SURVEYOR

A history of surveys, corner descriptions, and other relevant information are contained in the field notes.

This plat represents the dependent resurvey of portions of the subdivisional lines and subdivision of section lines of section 19, designed to restore the corners in their true original locations according to the best available evidence, Township 24 South, Range 6 West, Willamette Meridian, Oregon.

Official areas based on the measurements of this survey have been returned for federal interest land where indicated. Aliquot part legal subdivisions retain their aliquot characteristics and refer to precisely the same land as that which was previously identified by its original survey or description. Except as indicated hereon, the lottings and areas are as shown on the plat approved February 3, 1892.

Survey executed by Jeffrey O. Covington, Cadastral Surveyor, beginning January 7, 2020, and completed April 30, 2020, pursuant to special instructions approved December 16, 2019, for Group No. 2963, Oregon.



LEGAL SUBDIVISION	OFFICIAL ACRES
SECTION 19	
NE 1/4 NE 1/4	40.03
NW 1/4 NE 1/4	40.15
SW 1/4 NE 1/4	40.11
SE 1/4 NE 1/4	39.93
TOTAL AREA	160.22
FEDERAL INTEREST	
LAND RESURVEYED	

NOTE:
The lightweight line with bearing and distance shown in section 19 was surveyed by Joseph S. Gawron in 1962, and was utilized to calculate the areas of Federal interest land.

LEGEND	
◇	Original corner previously remonumented
◆	Original corner remonumented this survey
□	Corner previously established or reestablished
■	Corner previously established; remonumented this survey

UNITED STATES DEPARTMENT OF THE INTERIOR
BUREAU OF LAND MANAGEMENT

Portland, Oregon

This plat is strictly conformable to the approved field notes, and the survey, having been correctly executed in accordance with the requirements of law and the regulations of this Bureau, is hereby accepted.

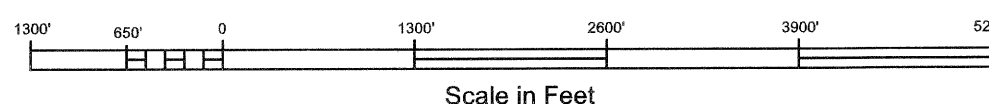
For the Director

Mary J. M. Hattel

Chief Cadastral Surveyor of Oregon

November 23, 2021

Date



OFFICIALLY FILED: 1/20/2022