

TOWNSHIP 24 SOUTH, RANGE 6 WEST, OF THE WILLAMETTE MERIDIAN, OREGON

DOUGLAS COUNTY SURVEYOR

DEPENDENT RESURVEY

(A) The cor. of secs. 3, 4, 9, and 10, perpetuated by the Douglas County Surveyor's Office in 1969, monumented with an iron post, 1 1/4 ins. diam., firmly set, projecting 13 ins. above ground, with a brass cap mkd.

COUNTY SURVEYORS OFFICE
T 24 S R 6 W
S 4 | S 3
S 9 | S 10
1969

from which the remains of the original bearing trees

A roothole bears N. 88 3/4° E., 17.2 ft. dist., downhill of which is a down, decayed fir snag, size indeterminate, with no marks visible. (Record, N. 88° 40' E.)

A sawed fir stump, 36 ins. diam., bears S. 78 1/2° E., 64.0 ft. dist., with scribe marks R6W S visible on an opened blaze. (Record, S. 78° 25' E.)

A sawed, decayed fir stump, 28 ins. diam., bears S. 6° W., 19.8 ft. dist., with no marks visible on an open blaze.

A sawed fir stump, 47 ins. diam., bears N. 86 3/4° W., 49.5 ft. dist., with a healed blaze. (Record, N. 86° 50' W.)

and the remains of bearing trees mkd. by the Douglas County Surveyor's Office

A fir, 35 ins. diam., bears N. 14° E., 38.0 ft. dist., with a healed blaze.

A fir, 41 ins. diam., bears S. 37 1/4° W., 20.2 ft. dist., with scribe marks T24S R6W S9 CS BT visible on bark.

A sawed fir stump, 34 ins. diam., bears N. 50° W., 21.9 ft. dist., with a healed blaze.

and new accessories

A fir, 15 ins. diam., bears S. 69° E., 38.7 ft. dist., mkd. T24S R6W S10 BT.

A rebar, 30 ins. long, 5/8 in. diam., driven 28 ins. in the ground for a reference monument, bears N. 4° 37' 12" W., 14.98 ft. dist. with aluminum cap mkd. RM T24S R6W S4 I5.0 FT. TO COR 2010 and an arrow pointing to the cor.

Corner is located 180 ft. S. of a creek, 2 ft. wide, course N. 38° W.

(B) The S 1/16 sec. cor. of secs. 3 and 4, established by Johnstone, PLS No. 498, in 1982, and is accepted as the cor., monumented with a rebar, 5/8 in. diam., firmly set, projecting 16 ins. above ground with an aluminum cap mkd.

T 24 S R 6 W 1982
S 1/16
4 | 3
LS 498

from which bearing trees mkd. by Johnstone

A fir, 19 ins. diam., bears S. 58 3/4° E., 7.8 ft. dist., with a healed blaze.

A fir, 21 ins. diam., bears N. 70° W., 11.4 ft. dist., with a healed blaze.

Corner is located 415 ft. S. of a spur, slopes N. 50° W.

(C) The 1/4 sec. cor. of secs. 3 and 4, perpetuated by the Douglas County Surveyor's Office in 1969, monumented with an iron post, 1 1/4 ins. diam., firmly set, projecting 10 ins. above ground, with a brass cap mkd.

COUNTY SURVEYORS OFFICE
T 24 S R 6 W
1/4 S 4 | S 3
1969

from which the remains of the original bearing trees

A fir, 32 ins. diam., bears S. 18° E., 7.3 ft. dist., with a healed blaze.

A roothole bears S. 47 1/4° W., 9.2 ft. dist., alongside of which is a down, decayed dogwood snag, 11 ins. diam., with a hollow blaze.

and the remains of bearing trees mkd. by the Douglas County Surveyor's Office

A decayed fir stump, size indeterminate, bears N. 62° W., 32.1 ft. dist., with no marks visible.

and a new bearing tree

A maple, 13 ins. diam., bears S. 33 1/2° W., 24.7 ft. dist., mkd. 1/4 S4 BT.

Corner is located 45 ft. S. of a ravine, drains N. 70° W., and 190 ft. N. of a spur, slopes N. 40° W.

(D) The N 1/16 sec. cor. of secs. 3 and 4, established by Johnstone, PLS No. 498, in 1982, and is accepted as the cor., monumented with a rebar, 5/8 in. diam., firmly set, projecting 8 ins. above ground, with an aluminum cap mkd.

T 24 S R 6 W 1982
N 1/16
S 4 | S 3
LS 498

from which the remains of bearing trees mkd. by Johnstone

A fir, 24 ins. diam., bears N. 73 3/4° W., 10.3 ft. dist., with a healed blaze.

A sawed fir stump, 26 ins. diam., bears N. 2 3/4° W., 50.3 ft. dist., with a healed blaze.

and a new bearing tree

A hemlock, 7 ins. diam., bears N. 15 3/4° E., 26.1 ft. dist., mkd. N 1/16 S3 BT.

(E) The cor. of secs. 3, 4, 33, and 34, on the N. bdy. of the Tp., monumented with an iron post, 2 ins. diam., firmly set, projecting 5 ins. above a mound of stone, 2 ft. diam., 1 ft. high (alongside of which is a "T" shaped iron rod, 3/4 in. diam., firmly set, projecting 7 ins. above the mound of stone, with a brass washer mkd. WILFORD HAINES SURVEY 239 DRAIN, ORE., with a tack in center), with a brass cap mkd.

T 23 S R 6 W
S 33 | S 34
S 4 | S 3
T 24 S R 6 W
1957

from which the remains of the original bearing trees

A roothole bears S. 3° E., 61.4 ft. dist., downhill of which is a down, decayed fir snag, size indeterminate, with no marks visible.

A decayed fir stump, 48 ins. diam., bears S. 7° W., 11.2 ft. dist., with scribe marks R6W T24S S4 visible on an open blaze.

and the remains of bearing trees mkd. by Whipple, reported by Saveland

A sawed, decayed fir stump, 55 ins. diam., bears N. 48 1/4° E., 45.5 ft. dist., with a healed blaze.

A roothole bears S. 31 1/4° E., 31.7 ft. dist., downhill of which is an uprooted fir snag, 29 ins. diam., with a healed blaze.

A decayed fir stump, 3 ins. diam., bears S. 43° W., 8.6 ft. dist., with scribe mark T visible on an open, pitched-over blaze.

A fir, 35 ins. diam., bears N. 17 1/4° W., 16.5 ft. dist., with a healed double blaze. and a bearing tree mkd. by Gould, Gawron, and Eggen, reported by Saveland

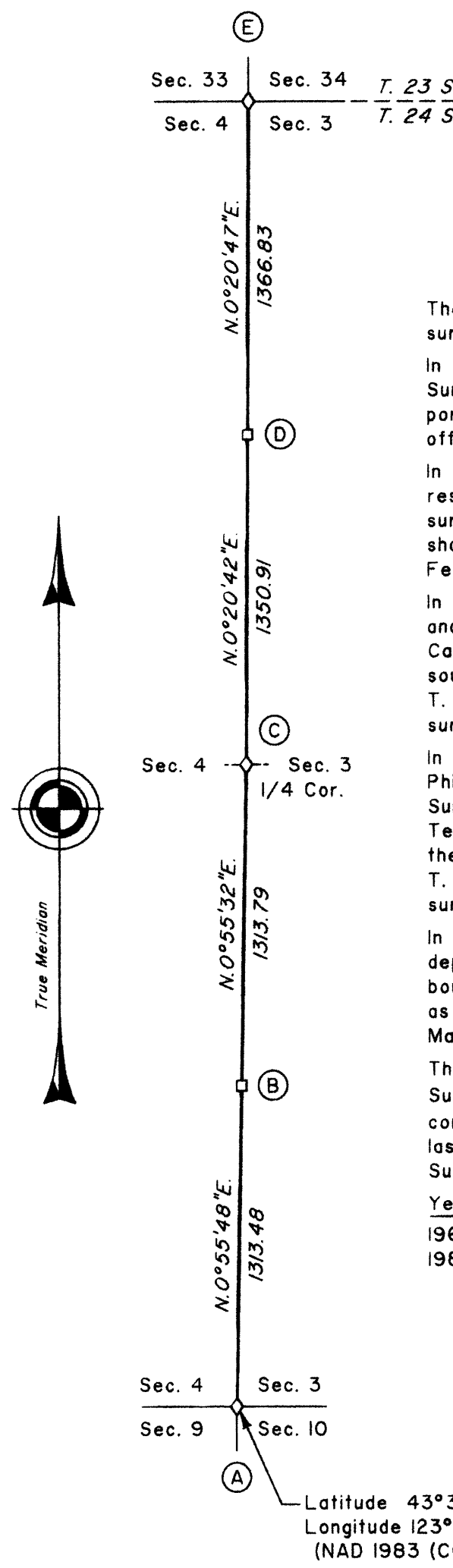
A fir, 13 ins. diam., bears N. 51 1/2° E., 32.7 ft. dist., with a healed blaze.

and bearing trees mkd. by Saveland

A fir, 25 ins. diam., bears S. 72 1/4° E., 45.1 ft. dist., with scribe marks T24S R6W S3 BT visible on an open blaze.

A cedar, 18 ins. diam., bears S. 54 1/2° W., 28.8 ft. dist., with scribe marks T24S R6W S4 BT visible on an open blaze.

Corner is located 90 ft. W. of Yellow Creek, 17 ft. wide, course S. 20° E.



The history of the official surveys pertaining to this survey is as follows:

In 1853, Robert Elder and Henry S. Gile, U.S. Deputy Surveyors, surveyed the north boundary and a portion of the subdivisional lines, as shown on the official plat of survey approved June 30, 1853.

In 1891, Williams R. Whipple, U.S. Deputy Surveyor, resurveyed a portion of the north boundary and surveyed the remainder of the subdivisional lines, as shown on the official plat of survey approved February 3, 1892.

In 1943-57, Otis O. Gould, Cadastral Engineer, and Joseph S. Gawron and Orville N. Eggen, Cadastral Surveyors, dependently resurveyed the south boundary and subdivisional lines of T. 23 S., R. 6 W., as shown on the official plat of survey accepted August 24, 1960.

In 1986-95, Wayne L. Rogers, Boyd W. Peterson, Philip G. Griffin, and Dale T. Bedell, Cadastral Surveyors, and Robert H. Browning, Surveying Technician, dependently resurveyed a portion of the south boundary and subdivisional lines of T. 23 S., R. 6 W., as shown on the official plat of survey accepted October 17, 1995.

In 2010, Kenneth W. Saveland, Cadastral Surveyor, dependently resurveyed portions of the south boundary and subdivisional lines of T. 23 S., R. 6 W., as shown on the official plat of survey accepted March 2, 2012.

The following records filed in the Douglas County Surveyor's Office are referred to in subsequent corner descriptions and are referenced by surveyor's last name, official title or Professional Land Surveyor (PLS) No., and year.

Table with 3 columns: Year, Name and Title/Registration No., File No. Includes entries for 1969 Douglas County Surveyors Office CS52/102 and 1982 Howard W. Johnstone PLS 498 M92-17

This plat constitutes the entire record of the dependent resurvey of a portion of the subdivisional lines, Township 24 South, Range 6 West, Willamette Meridian, Oregon, designed to restore the corners in their true original locations according to the best available evidence.

The survey was executed in accordance with the specification set forth in the Manual of Surveying Instructions (2009), and the special instructions dated April 6, 2010, and approved April 8, 2010, for Group No. 2314, Oregon.

The direction of the lines are based on the true meridian as determined by Global Positioning System (GPS) techniques and carried forward by sustained angulation using conventional survey techniques. All measurements along the lines were derived through the use of GPS and conventional survey techniques. Measured distances and directions have been adjusted by computer software that incorporates a least squares adjustment routine. The adjusted mean bearings and mean horizontal ground elevation distances are reported to the nearest second and 0.01 foot.

Preliminary to the resurvey, the lines of the official surveys and resurveys were retraced and search was made for all corners, lines, other calls of the record, and, where available, collateral evidence of local surveys and corners. Identified corners were perpetuated in their original position. The retracement data were thoroughly verified and only the true line field data are given hereon.

Each new bearing tree has a 2 1/2 inch x 1/4 inch magnetic nail (Mag Nail) driven at the base on right side center, unless otherwise noted in the corner description.

Only those lines bounding federal interest land were blazed.

The geographic position shown hereon was determined by a tie from a temporary GPS control point, utilizing dual frequency, carrier phase GPS receivers relative to National Spatial Reference System Continuously Operating Reference Station (CORS) DODSON BUTTE CORS ARP and National Cooperative CORS Network Station ROSEBURG COOP CORS ARP.

Survey executed by Kenneth W. Saveland, Cadastral Surveyor, beginning July 13, 2010, and completed August 9, 2010. He was assisted by Robert NMI Durning, and Joel R. Herzberg, Surveying Technicians.

LEGEND
Original corner previously remonumented
Corner previously established or reestablished

UNITED STATES DEPARTMENT OF THE INTERIOR
BUREAU OF LAND MANAGEMENT

Portland, Oregon

The survey represented by this plat, having been correctly executed in accordance with the requirements of law and the regulations of this Bureau, is hereby accepted.

For the Director

May J. M. Hartzel

Chief Cadastral Surveyor of Oregon

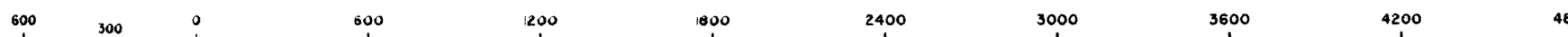
April 20, 2012

Date

I, Kenneth W. Saveland, Cadastral Surveyor, HEREBY CERTIFY upon honor, that in pursuance of special instructions bearing the approval date of the 8th day of April, 2010, and the assignment instructions bearing the date of the 9th day of April, 2010, I have dependently resurveyed a portion of the subdivisional lines, Township 24 South, Range 6 West, Willamette Meridian, Oregon, which is represented upon this plat as having been executed by me and under my direction; and that said survey has been made in strict conformity with said special instructions, the Manual of Surveying Instructions, and in the specific manner described on this plat.

Kenneth W. Saveland
Cadastral Surveyor

APRIL 17, 2012
Date



Scale in Feet

OFFICIALLY FILED: 5/10/2012