

# TOWNSHIP 24 SOUTH, RANGE 6 WEST, OF THE WILLAMETTE MERIDIAN, OREGON. DEPENDENT RESURVEY AND SUBDIVISION OF SECTION

This plat represents a retracement and reestablishment of a portion of the east boundary and subdivisional lines, T. 24 S., R. 6 W., Willamette Meridian, Oregon, designed to restore the corners in their true original locations according to the best available evidence, and the subdivision of section 11. Excepting as new or modified vacant subdivisions as shown hereon, the lottings and areas are as shown on the plat approved June 30, 1855.

The east boundary and a portion of the subdivisional lines were surveyed by Robert Elder and Henry S. Gile, Deputy Surveyors, in 1853.

The subdivisional lines of the township were completed by Williams R. Whipple, Deputy Surveyor, in 1891.

A portion of the subdivisional lines were resurveyed by C. Albert White and Norman J. McDonald, Cadastral Surveyors, in 1963.

A portion of the resurvey was executed by Daniel L. Berry and Charles E. Akin, Jr., Cadastral Surveyors, from September 5, 1973, to August 19, 1975, under Special Instructions dated August 24, 1973, which provided for the surveys included under Group No. 826, Oregon.

A portion of the resurvey and the subdivision of section 11 was executed by Glenn S. Baughman, Registered Land Surveyor, No. 536, from July 28, 1975 to August 19, 1975, under Special Instructions dated October 31, 1974, and Contract No. 52500-CT5-1116, dated June 25, 1975, which provided for the surveys included under Group No. 856, Oregon.

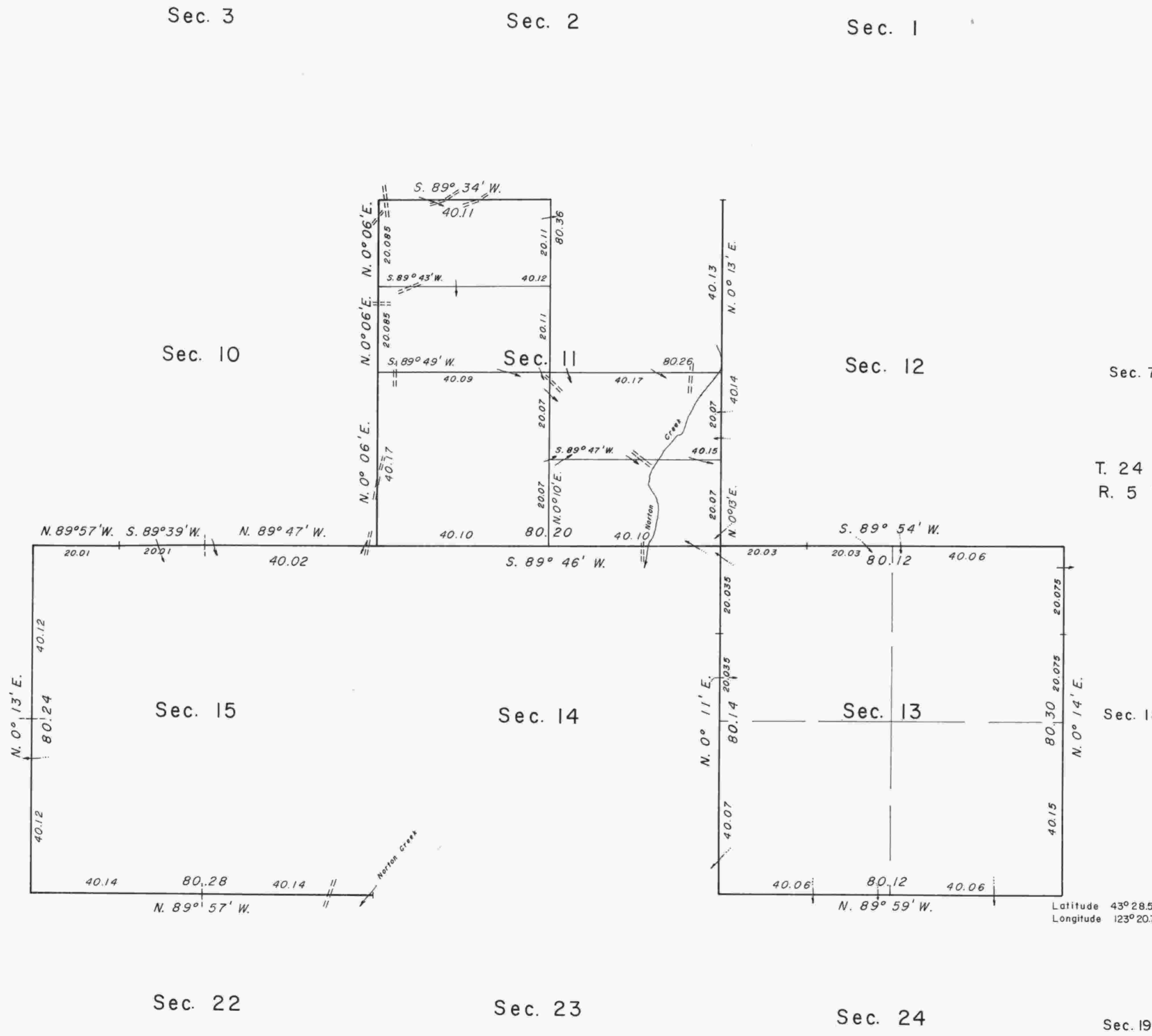
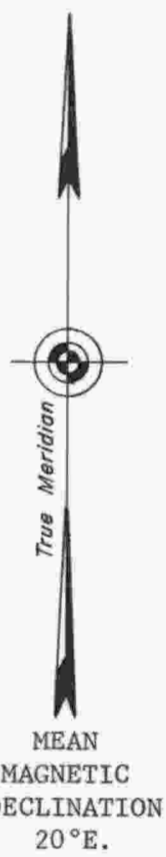
The surveys executed under Group No. 856, Oregon, were inspected by William W. Glenn, Contracting Officers Authorized Representative, and found to be executed in strict conformance with the Special Instructions and the Manual of Surveying Instructions for the Survey of the Public Lands of the United States, and in the specific manner described in the foregoing field notes.

UNITED STATES DEPARTMENT OF THE INTERIOR  
BUREAU OF LAND MANAGEMENT  
Washington, D. C. August 18, 1977

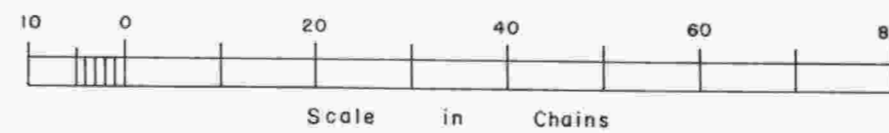
This plat is strictly conformable to the approved field notes, and the survey, having been correctly executed in accordance with the requirements of law and the regulations of this Bureau, is hereby accepted.

For the Director

Acting Chief, Division of Cadastral Survey



Timber in this area consists of fir, cedar, oak, hemlock, maple, chinquapin, and madrone.



Latitude 43° 28.5' N.  
Longitude 123° 20.7' W.