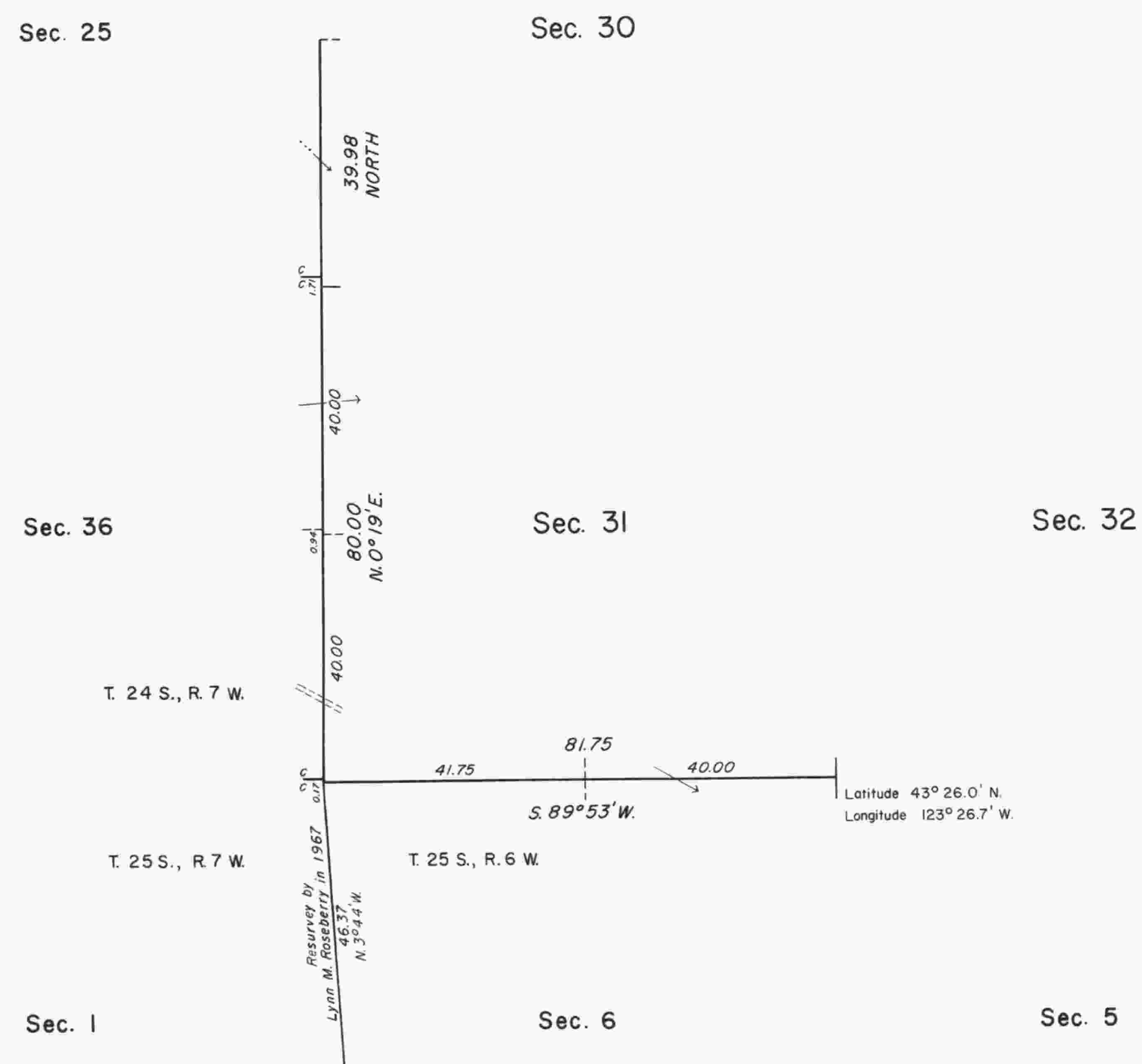


TOWNSHIP 24 SOUTH, RANGE 6 WEST, OF THE WILLAMETTE MERIDIAN, OREGON.

DEPENDENT RESURVEY



This plat represents a retracement and reestablishment of a portion of the south and west boundaries of T. 24 S., R. 6 W., Willamette Meridian, Oregon, designed to restore the corners in their true original location according to the best available evidence.

The south and west boundaries and a portion of the subdivisional lines were surveyed by Robert Elder and Henry Gile, in 1853. The survey of the subdivisional lines was completed by Williams R. Whipple, in 1891. A portion of the west boundary of the township was retraced by Williams R. Whipple, in 1893. The east boundary of section 1, T. 25 S., R. 7 W., was surveyed by William P. Heydon, in 1897.

The resurvey was executed by Lynn M. Roseberry, Cadastral Surveyor, from August 3, 1967 to September 5, 1967 under Special Instructions dated July 13, 1967 for Group No. 645, Oregon.

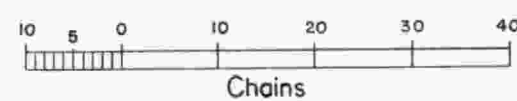
UNITED STATES DEPARTMENT OF THE INTERIOR
BUREAU OF LAND MANAGEMENT
Washington, D.C. December 5, 1975

This plat is strictly conformable to the approved field notes, and the survey, having been correctly executed in accordance with the requirements of law and the regulations of this Bureau, is hereby accepted.

For the Director

Roger T. Barron

Acting Chief, Division of Cadastral Survey



Timber in this area consists of fir, hemlock, cedar, yew, madrone, chinquapin, dogwood, alder, maple, and oak.