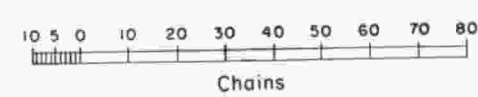
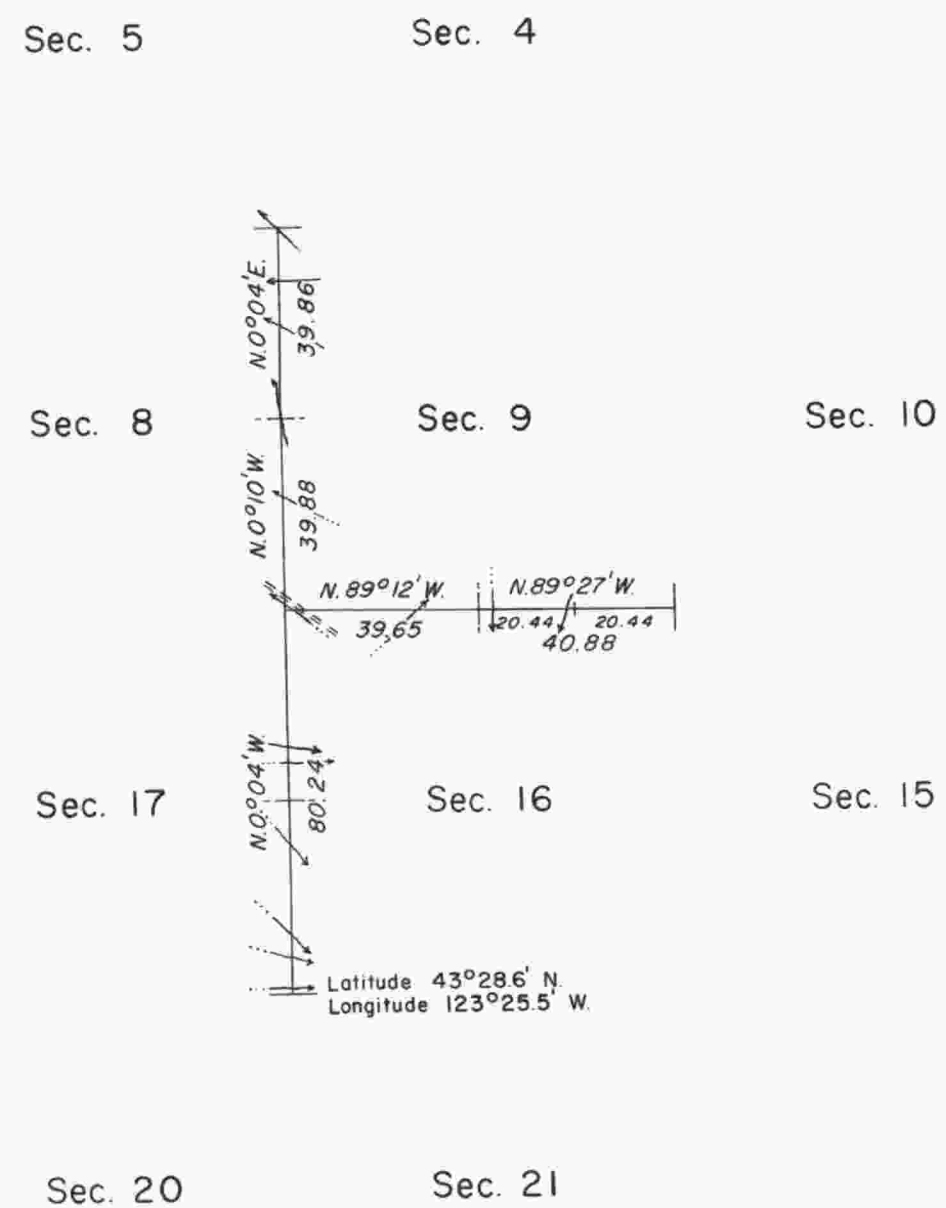


TOWNSHIP 24 SOUTH, RANGE 6 WEST, OF THE WILLAMETTE MERIDIAN, OREGON.
DEPENDENT RESURVEY



Timber in this area consists of fir, hemlock, cedar, madrone, oak, maple, myrtle, alder, and yew.

This plat represents a retracement and reestablishment of a portion of the subdivisional lines, T. 24 S., R. 6 W., Willamette Meridian, Oregon, designed to restore the corners in their true original locations according to the best available evidence.

Most of the subdivisional lines of the township including the lines between sections 15 and 16, and between sections 20 and 21, were surveyed by Robert Elder and Henry S. Gile, in 1853. The subdivisional lines were completed by William R. Whipple, in 1891.

Dependent resurvey of a portion of the subdivisional lines, T. 24 S., R. 6 W., Willamette Meridian, Oregon, executed by C. Albert White and Norman J. McDonald, June 4 to June 11, 1963, under Special Instructions dated April 8, 1940, which provide for the surveys included under Group No. 244, Oregon.

UNITED STATES DEPARTMENT OF THE INTERIOR
BUREAU OF LAND MANAGEMENT
Washington, D. C. November 19, 1964

This plat is strictly conformable to the approved field notes, and the survey, having been correctly executed in accordance with the requirements of law and the regulations of this Bureau, is hereby accepted.

For the Director

E. J. Lemington

Chief, Division of Engineering