

TOWNSHIP 24 SOUTH, RANGE 4 WEST, OF THE WILLAMETTE MERIDIAN, OREGON

DEPENDENT RESURVEY AND SUBDIVISION OF SECTION 5

FILED
 Date: 8/29/2011 By: JC
 This survey consists of:
 Map: VOL. 57
 Narrative: PAGES
 Corner Rpt: 22350-22361
 DOUGLAS COUNTY
 SURVEYOR

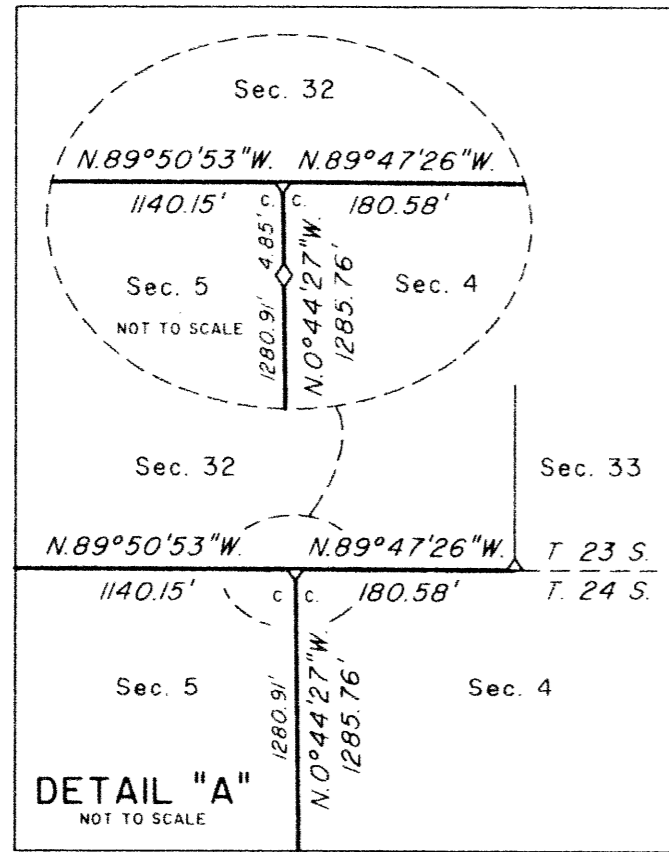
A history of surveys is contained in the field notes.

This plat represents the dependent resurvey of a portion of the south boundary of T. 23 S., R. 4 W., and a portion of the subdivision lines, designed to restore the corners in their true original locations according to the best available evidence, and the subdivision of section 5, T. 24 S., R. 4 W., Willamette Meridian, Oregon.

The survey was performed utilizing both conventional (directly measured angles and distances) and NAVSTAR Global Positioning System (GPS) satellite techniques. The GPS measurements utilized dual frequency, carrier phase GPS receivers. The baselines were computed in and adjusted using a least squares adjustment routine. Conventionally measured distances and directions have been adjusted using a least squares adjustment routine. The adjusted bearings and distances are reported to the nearest second and 0.01 foot.

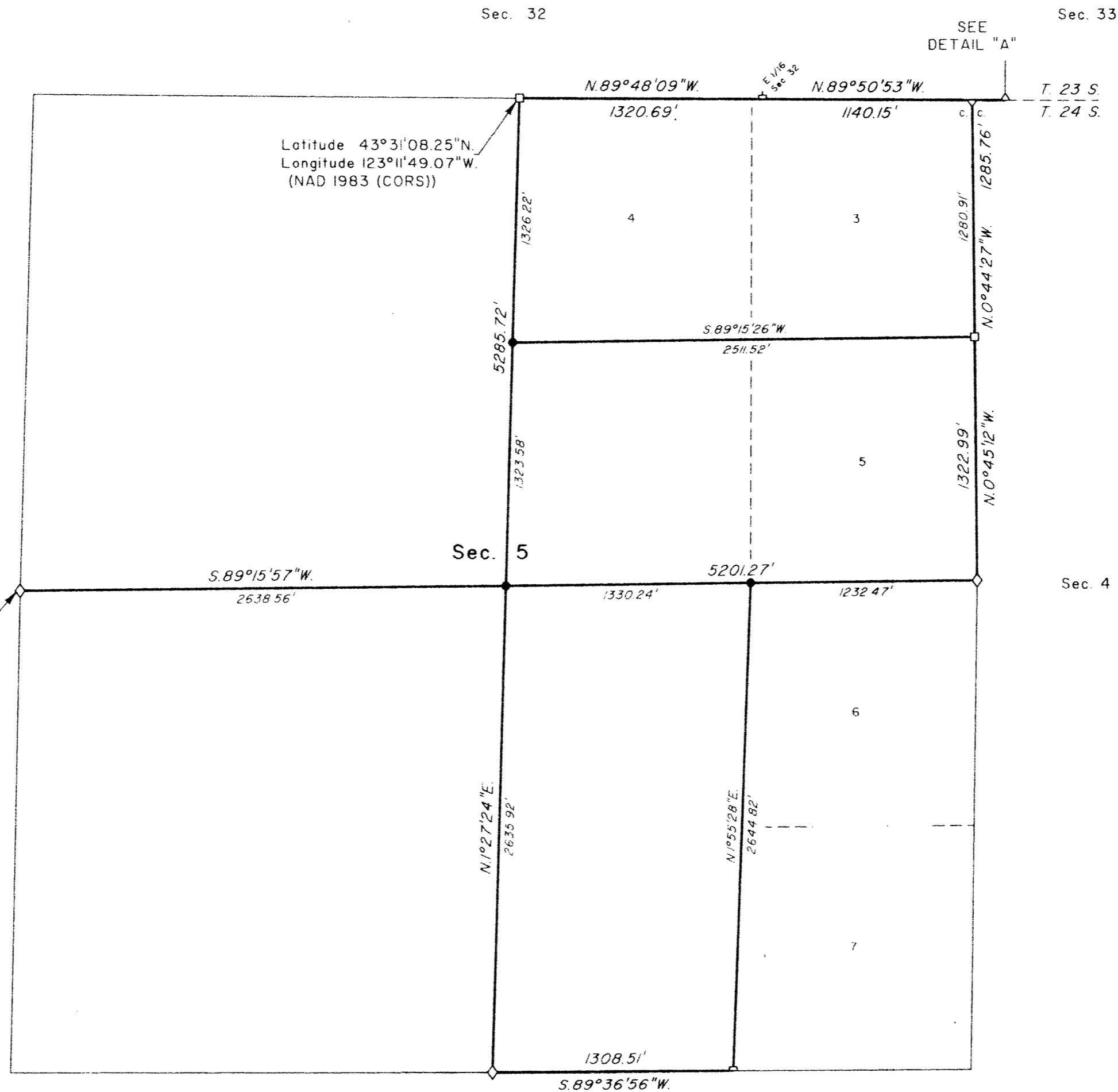
Actual quantity acreages have been returned for Federal interest lands where indicated. Changes in the official acreage of land described by aliquot part or lot number do not alter its description. Further subdivision of aliquot parts shall be in accordance with the Manual. Further subdivision of official lots may only be by supplemental plat or official survey. Official acreage and lot designations of Federal interest lands not affected by this survey are as shown on the plats approved February 20, 1856, and November 6, 1897.

The survey was executed by A. Bert Skeesick, Cadastral Surveyor, and Robert H. Browning, Surveying Technician, beginning October 9, 2008, and completed November 19, 2008, pursuant to Special Instructions dated July 31, 2008, under Group Number 2210, Oregon.



Latitude 43°30'41.754"N
 Longitude 123°12'25.787"W
 (NAD 1983 (CORSS))

LEGAL SUBDIVISION	OFFICIAL ACRES
SECTION 5	
LOT 3	34.59
LOT 4	39.92
NW 1/4 SE 1/4	40.12
SW 1/4 SE 1/4	39.79



Latitude 43°31'08.25"N
 Longitude 123°11'49.07"W
 (NAD 1983 (CORSS))

LEGEND	
◇	Original corner previously remonumented
□	Corner previously established or reestablished
●	Corner established or reestablished this survey

UNITED STATES DEPARTMENT OF THE INTERIOR
 BUREAU OF LAND MANAGEMENT

Portland, Oregon

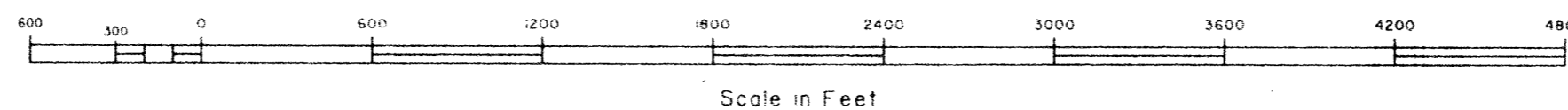
This plat is strictly conformable to the approved field notes, and the survey, having been correctly executed in accordance with the requirements of law and the regulations of this Bureau, is hereby accepted.

For the Director

Walter M. ...

Chief Cadastral Surveyor of Oregon

June 23, 2011
 Date



OFFICIALLY FILED: 8/29/2011