

TOWNSHIP 24 SOUTH, RANGE 4 WEST, OF THE WILLAMETTE MERIDIAN, OREGON

DEPENDENT RESURVEY

FILED

Date: 12-16-1999 By: JC

This survey consists of:

Map: _____

Narrative: V52

Corner Pkt: 2017B-184

DOUGLAS COUNTY
SURVEYOR

Sec 4

Sec 3

Sec 2

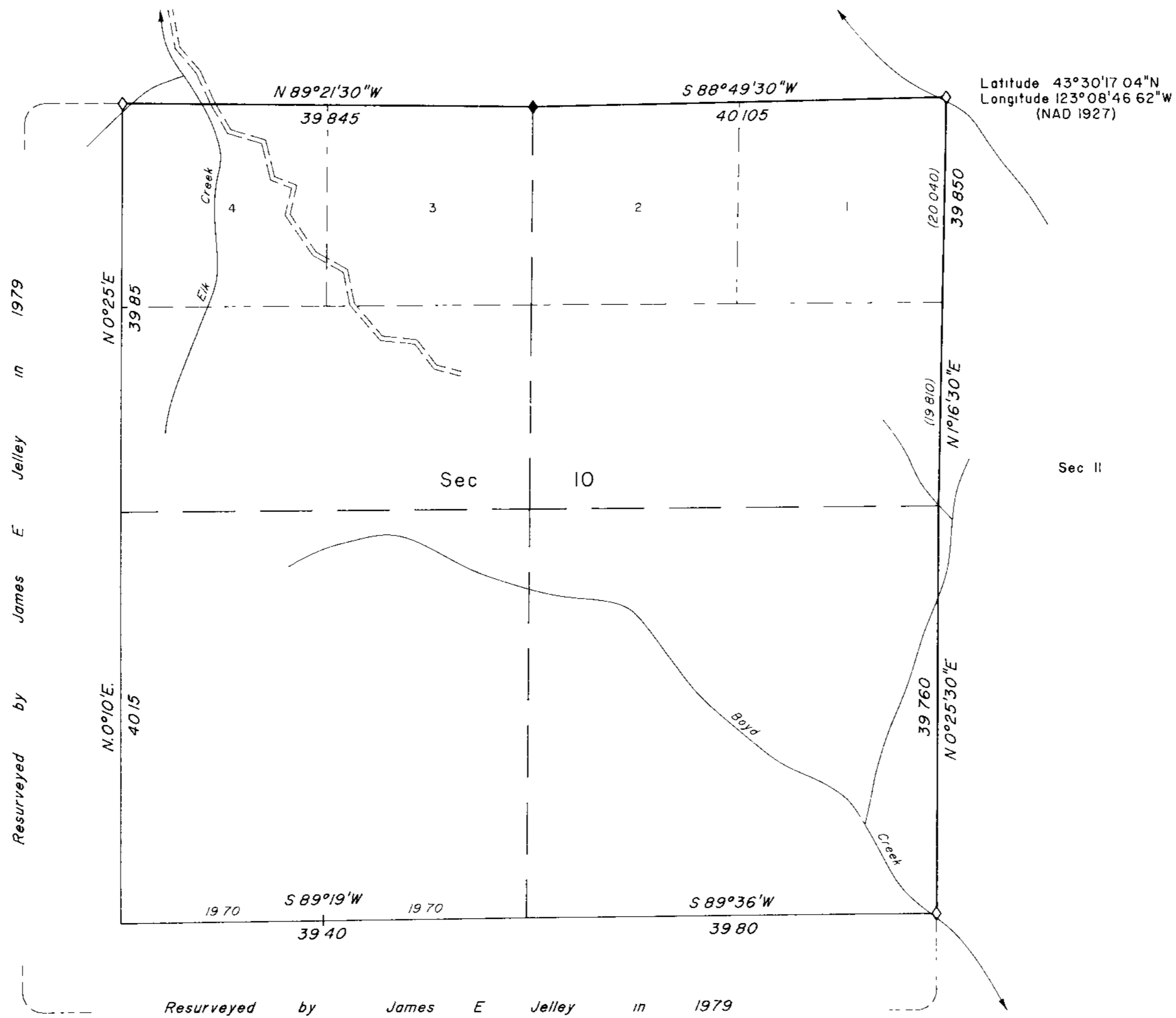
Sec 9

Sec 10

Sec 11

Sec 15

Sec 14



A history of surveys is contained in the field notes.

This plat represents a dependent resurvey of a portion of the subdivisional lines, T 24 S., R 4 W., Willamette Meridian, Oregon, designed to restore the corners in their true original locations according to the best available evidence.

The lottings and areas are as shown on the plat approved November 6, 1897.

The survey was executed by Wayne L. Rogers, Cadastral Surveyor, beginning April 14, 1997, and completed April 29, 1997, pursuant to Special Instructions dated April 9, 1997, under Group Number 1834, Oregon.

Timber in this area consists of fir, cedar, hemlock, alder, maple, oak, chinquapin, madrone, and yew.

LEGEND

- ◊ Original corner previously remonumented
- ◆ Original corner remonumented this survey

UNITED STATES DEPARTMENT OF THE INTERIOR
BUREAU OF LAND MANAGEMENT

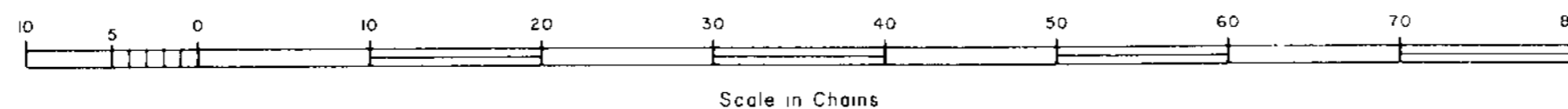
Portland, Oregon

August 16, 1999

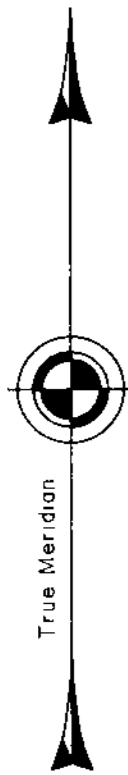
This plat is strictly conformable to the approved field notes, and the survey, having been correctly executed in accordance with the requirements of law and the regulations of this Bureau, is hereby accepted.

For the Director

Chief Cadastral Surveyor of Oregon



True Meridian



Mean magnetic declination 19° East