

# TOWNSHIP 24 SOUTH, RANGE 4 WEST, OF THE WILLAMETTE MERIDIAN, OREGON

## DEPENDENT RESURVEY



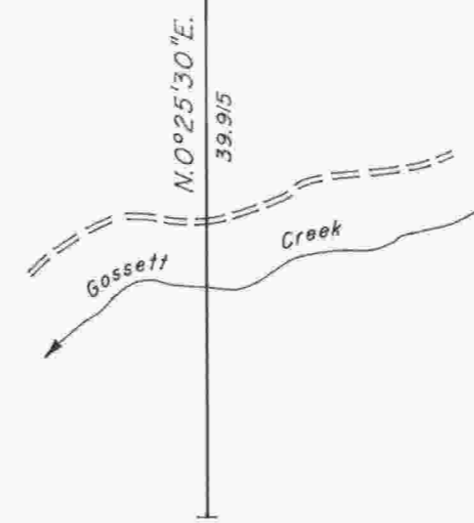
Sec. 11

Sec. 12

Sec. 14

Sec. 13

Latitude 43°28'59.73"N.  
 Longitude 123°07'36.00"W.  
 (NAD 1927)



A history of surveys is contained in the field notes.

This plat represents a dependent resurvey of the line between sections 13 and 14, T. 24 S., R. 4 W., Willamette Meridian, Oregon, designed to restore the corners in their true original locations according to the best available evidence.

The survey was executed by Boyd W. Peterson, Cadastral Surveyor, beginning November 1, 1989, and completed May 24, 1990, pursuant to Special Instructions dated September 13, 1989, under Group Number 1511, Oregon.

Timber in this area consists of fir, cedar, maple, chinquapin, alder, oak and madrone.

UNITED STATES DEPARTMENT OF THE INTERIOR  
 BUREAU OF LAND MANAGEMENT

Portland, Oregon

April 9, 1993

This plat is strictly conformable to the approved field notes, and the survey, having been correctly executed in accordance with the requirements of law and the regulations of this Bureau, is hereby accepted.

For the Director

Chief Cadastral Surveyor of Oregon

