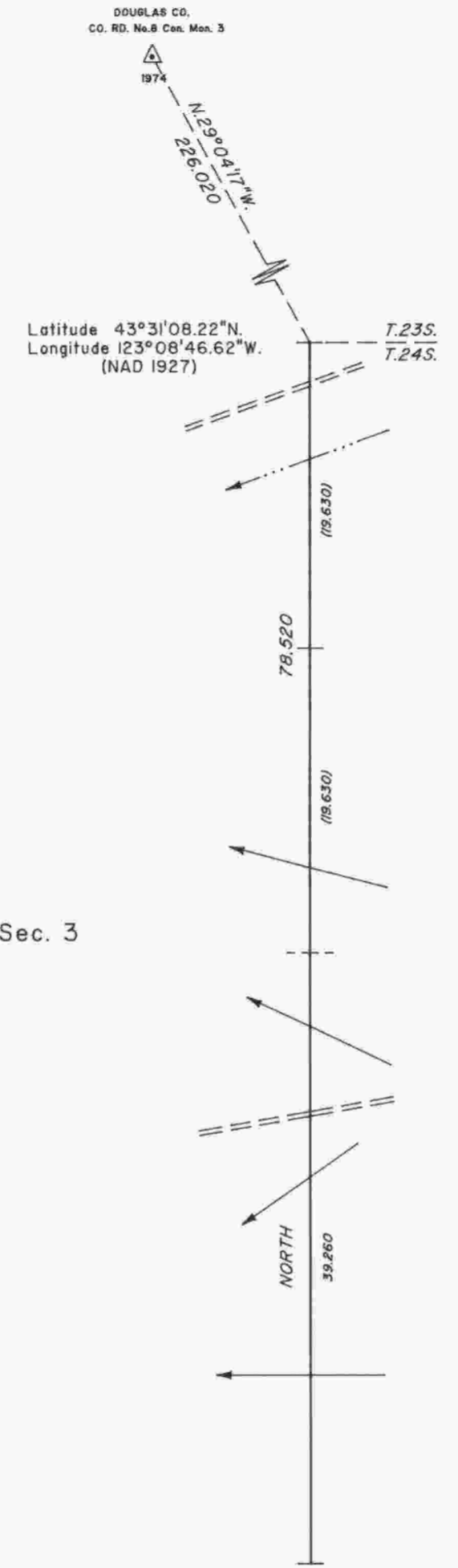


# TOWNSHIP 24 SOUTH, RANGE 4 WEST, OF THE WILLAMETTE MERIDIAN, OREGON

## DEPENDENT RESURVEY



A history of surveys is contained in the field notes.

This plat represents a dependent resurvey of the line between sections 2 and 3, T. 24 S., R. 4 W., Willamette Meridian, Oregon, designed to restore the corners in their true original locations according to the best available evidence.

The survey was executed by Boyd W. Peterson, Cadastral Surveyor, beginning July 25, 1988, and completed August 4, 1988, pursuant to Special Instructions dated June 2, 1988, under Group Number 1448, Oregon.

Timber in this area consists of fir, hemlock, cedar, maple, chinquapin, alder, oak, white fir and madrone.

UNITED STATES DEPARTMENT OF THE INTERIOR  
BUREAU OF LAND MANAGEMENT

Portland, Oregon      December 27, 1991

This plat is strictly conformable to the approved field notes, and the survey, having been correctly executed in accordance with the requirements of law and the regulations of this Bureau, is hereby accepted.

For the Director

*Wayne M. Gardner*

Chief Cadastral Surveyor of Oregon

