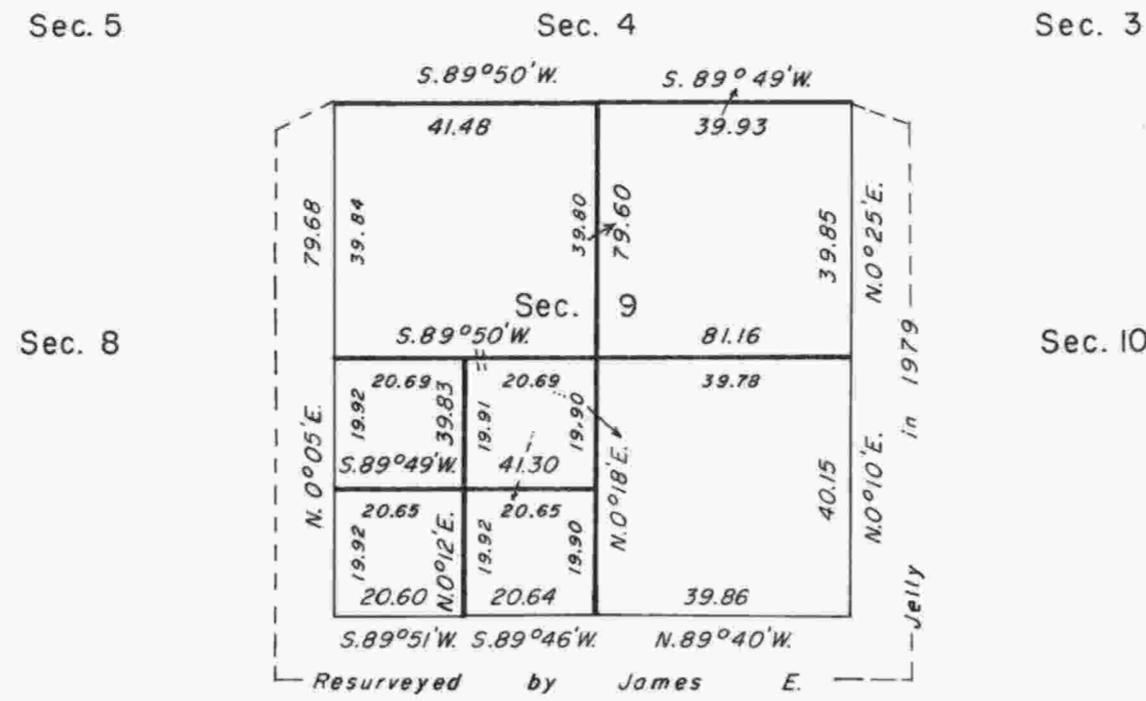


TOWNSHIP 24 SOUTH, RANGE 4 WEST, OF THE WILLAMETTE MERIDIAN, OREGON

CORRECTIVE DEPENDENT RESURVEY, DEPENDENT RESURVEY, AND SUBDIVISION OF SECTION 9



The history of surveys is contained in the field notes.

This plat represents a corrective dependent resurvey of a portion of the subdivisional lines, and dependent resurvey of a portion of the subdivisional lines, T. 24 S., R. 4 W., Willamette Meridian, Oregon, designed to restore the corners in their true original locations according to the best available evidence, and the subdivision of section 9.

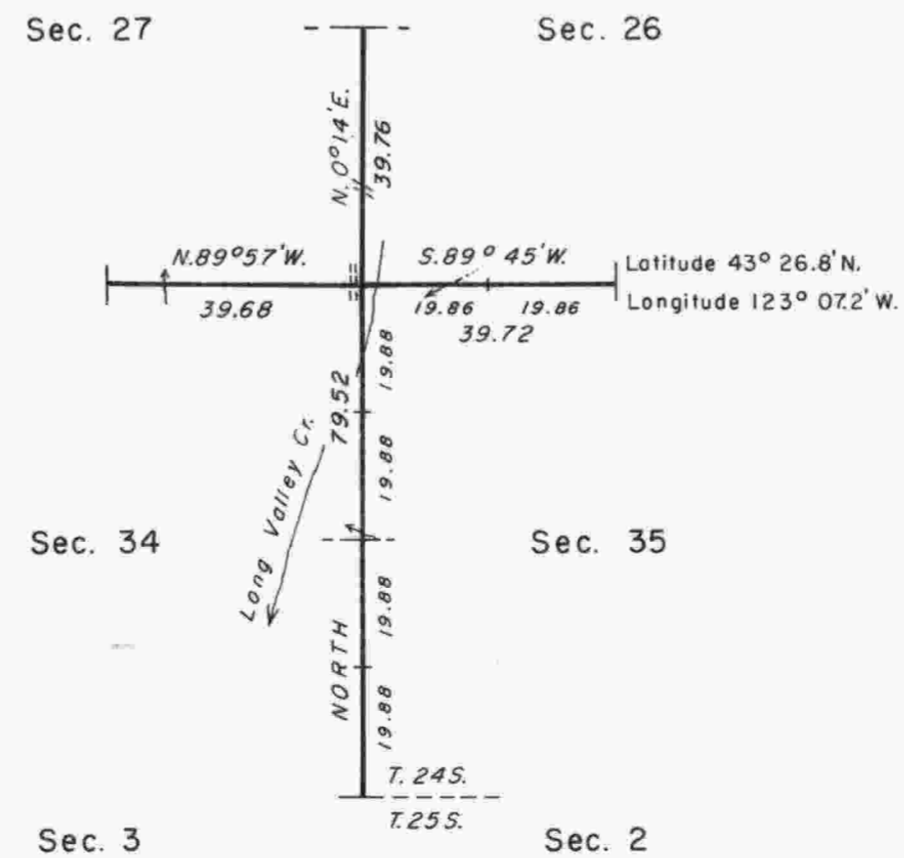
The lottings and areas are as shown on the plat approved November 6, 1897.

The survey was executed by Lance J. Bishop and James L. White, Cadastral Surveyors, beginning October 3, 1984, and completed January 15, 1985, pursuant to Special Instructions dated September 6, 1984, and Supplemental Special Instructions dated December 11, 1984, under Group Number 1233, Oregon.

Timber in this area consists of fir, hemlock, cedar, maple, oak, chinquapin, alder, and ash.



Mean magnetic declination
19° 30' EAST



UNITED STATES DEPARTMENT OF THE INTERIOR
BUREAU OF LAND MANAGEMENT
Portland, Oregon November 7, 1986

This plat is strictly conformable to the approved field notes, and the survey, having been correctly executed in accordance with the requirements of law and the regulations of this Bureau, is hereby accepted.

For the Director
William W. Glenn
Chief Cadastral Surveyor of Oregon

