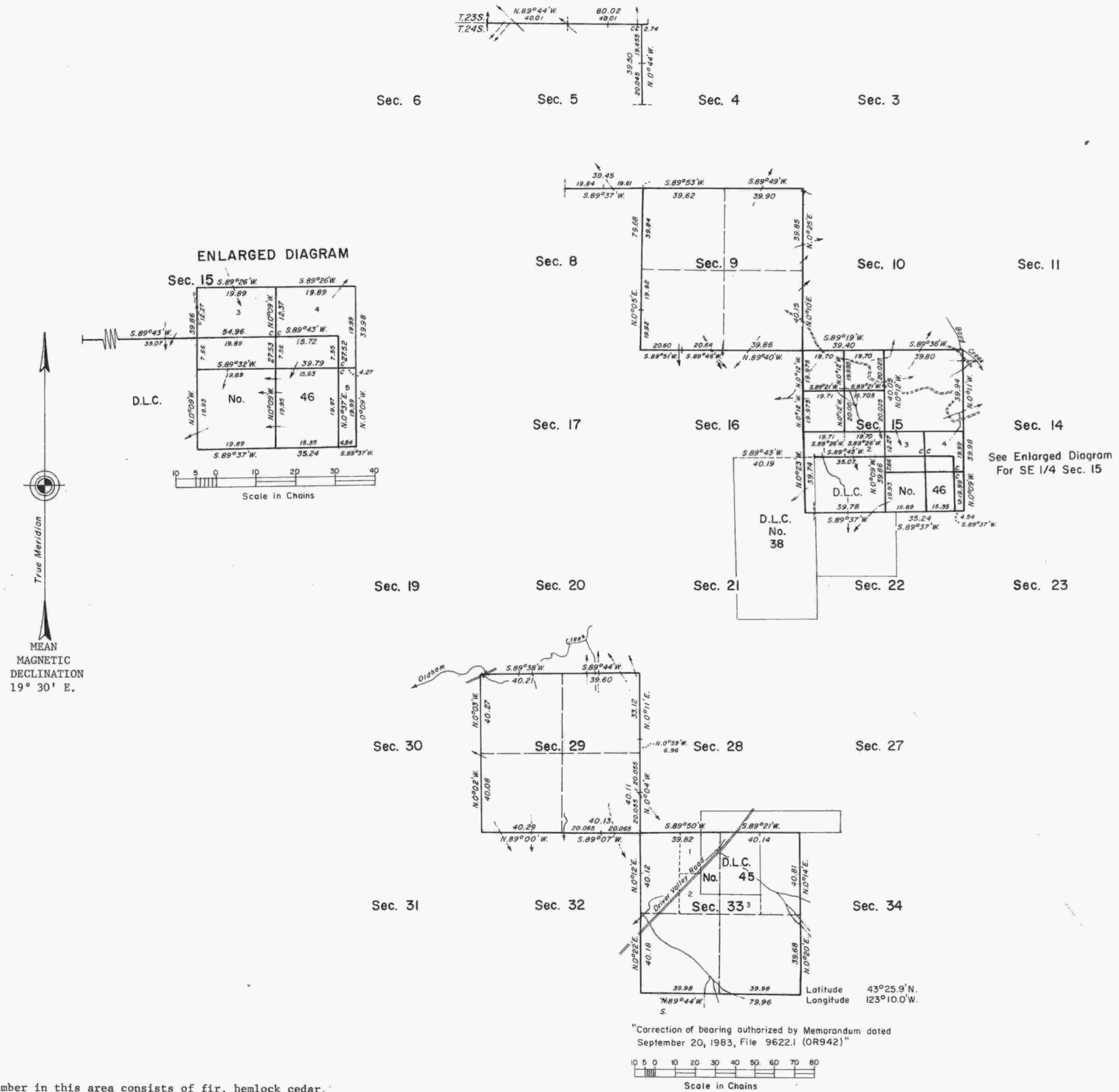


TOWNSHIP 24 SOUTH, RANGE 4 WEST, OF THE WILLAMETTE MERIDIAN, OREGON.

DEPENDENT RESURVEY AND SUBDIVISION OF SECTION 15



This plat represents the dependent resurvey of a portion of the south boundary, T. 23 S., R. 4 W., and a portion of the south boundary, subdivisional lines, and claim lines, designed to restore the corners in their true original locations according to the best available evidence, and the subdivision of section 15, in T. 24 S., R. 4 W., Willamette Meridian, Oregon.

The south boundary, and a portion of the north boundary and subdivisional lines of T. 24 S., R. 4 W., were surveyed by Harvey Gordon and Charles Gardner, in 1855.

The boundaries of Donation Land Claim No. 46, in T. 24 S., R. 4 W., were surveyed by Dennis Hathorn, in 1856.

A portion of the subdivisional lines of T. 24 S., R. 4 W., was surveyed by Oscar Thiel, in 1896-97.

Certain original corner points in T. 24 S., R. 4 W., were remonumented without survey by C. Albert White and Norman J. McDonald, in 1963.

A portion of the south boundary of T. 23 S., R. 4 W., was resurveyed by James E. Jelley, in 1976.

The lottings and areas are as shown on the plats approved February 20, 1856, June 1, 1860, and November 6, 1897.

Survey executed by James E. Jelley, Cadastral Surveyor, beginning May 11, 1979, and completed September 24, 1979, pursuant to Special Instructions dated April 19, 1979, and Supplemental Special Instructions dated July 3, 1979, for Group No. 979, Oregon.

UNITED STATES DEPARTMENT OF THE INTERIOR
BUREAU OF LAND MANAGEMENT
Denver, Colorado August 28, 1981

This plat is strictly conformable to the approved field notes, and the survey, having been correctly executed in accordance with the requirements of law and the regulations of this Bureau, is hereby accepted.

For the Director

Gerald F. Pittman
Acting Chief, Cadastral Survey
Examination and Approval Staff

"Correction of bearing authorized by Memorandum dated September 20, 1983, File 9622.1 (OR942)"

Timber in this area consists of fir, hemlock cedar, maple, oak, chinquapin, alder, and ash.