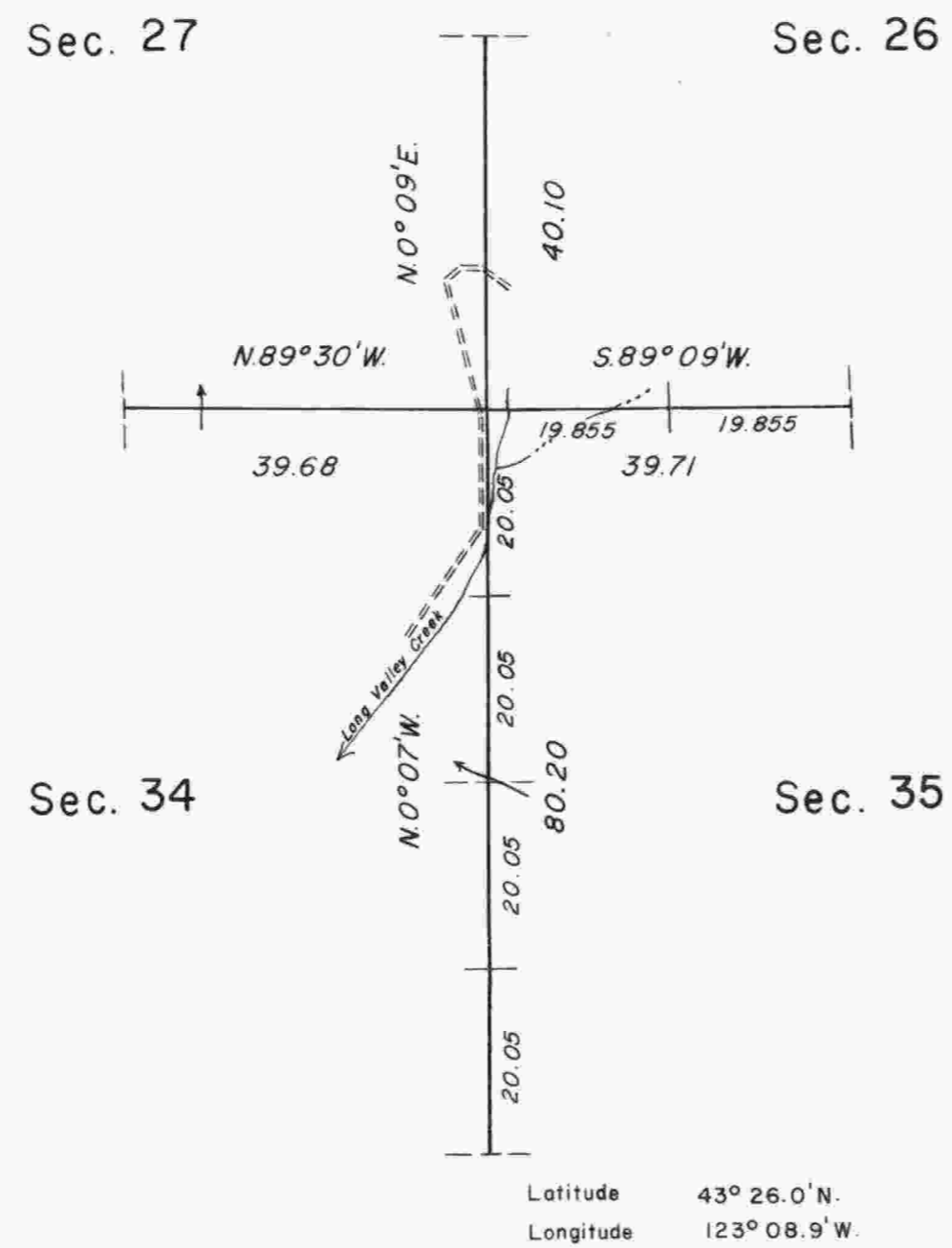
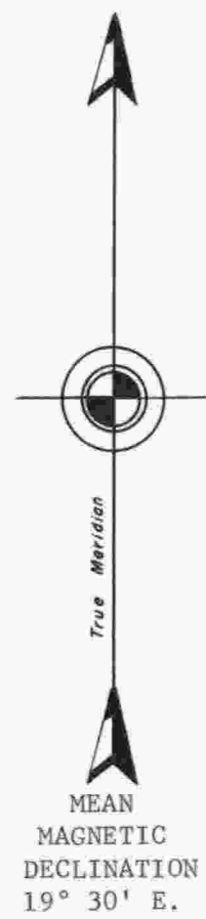


TOWNSHIP 24 SOUTH, RANGE 4 WEST, OF THE WILLAMETTE MERIDIAN, OREGON.

DEPENDENT RESURVEY



The south boundary of the township and a portion of the subdivisonal lines were surveyed by Harvey Gordon and Charles T. Gardner in 1855.

This plat represents a dependent resurvey of a portion of the subdivisonal lines, T. 24 S., R. 4 W., Willamette Meridian, Oregon, designed to restore the corners in their true original locations according to the best available evidence.

The resurvey was executed by Charles E. Akin, Jr., from August 14, 1972 to August 29, 1972, under Special Instructions dated August 7, 1972, for Group No. 793, Oregon.

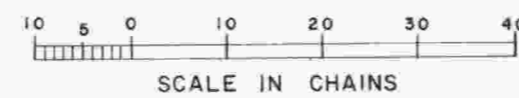
UNITED STATES DEPARTMENT OF THE INTERIOR
BUREAU OF LAND MANAGEMENT
Washington, D.C. March 14, 1975

This plat is strictly conformable to the approved field notes, and the survey, having been correctly executed in accordance with the requirements of law and the regulations of this Bureau, is hereby accepted.

For the Director

Roger T. Barron

Acting Chief, Division of Cadastral Survey



"SUSPENDED, November 30, 1984. See File 9622.1 (942)."

"Suspension Lifted, November 7, 1986, File 9600 (OR942).
Refer to plat accepted November 7, 1986."

Timber in this area consists of fir, alder, hemlock, madrone, maple, white oak, and black oak.