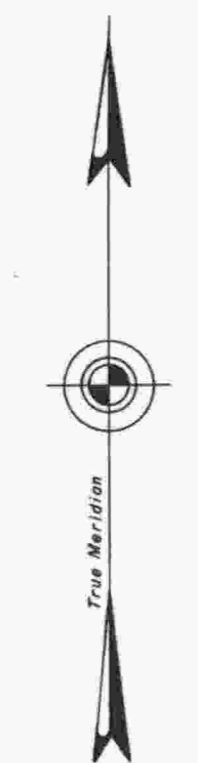
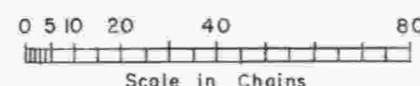
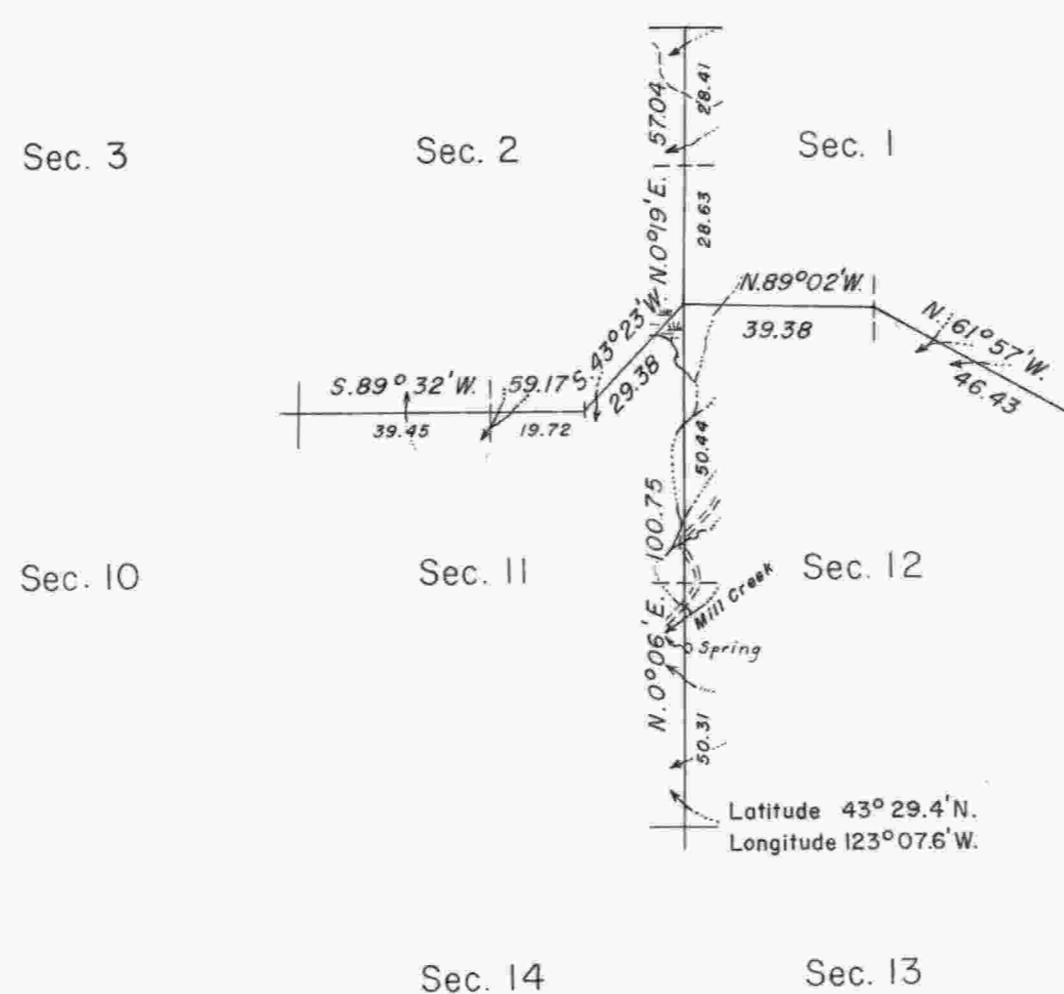


TOWNSHIP 24 SOUTH, RANGE 4 WEST, OF THE WILLAMETTE MERIDIAN, OREGON.
DEPENDENT RESURVEY



Mean
Magnetic
Declination
20°19' East



Timber in this area consists of old growth fir, hemlock, cedar, madrona, yew, chinquapin, maple, alder, and dogwood.

This plat represents a retracement and reestablishment of a portion of the subdivisional lines designed to restore the corners in their true original location according to the best available evidence.

A portion of the subdivisional lines surveyed by H. Gordon and C. Gardner in 1855 and by Oscar F. Thiel in 1896 and 1897.

A portion of the North boundary surveyed by C. S. Nicklin in 1897.

A portion of the East boundary surveyed by L. H. Wheeler in 1883, and retraced by Oscar F. Thiel in 1896 and 1897.

The East boundary resurveyed by Norman D. Price in 1950.

Dependent resurvey of a portion of the subdivisional lines of T. 24 S., R. 4 W., Willamette Meridian, Oregon, executed by Lynn M. Roseberry, August 19 to September 6, 1957, under Special Instructions dated June 21, 1957, which provide for the surveys included under Group No. 349, Oregon.

UNITED STATES DEPARTMENT OF THE INTERIOR
BUREAU OF LAND MANAGEMENT
Washington, D. C. April 14, 1958

This plat is strictly conformable to the approved field notes, and the survey, having been correctly executed in accordance with the requirements of law and the regulations of this Bureau, is hereby accepted.

For the Director

Earl G. Harrington
Cadastral Engineering Staff Officer