

TOWNSHIP 24 SOUTH, RANGE 3 WEST, OF THE WILLAMETTE MERIDIAN, OREGON

RETRACEMENT

This survey consists of:  
 Map: PLAT: T24-3 2016-1 A-B  
 Narrative: VOL 58  
 Corner Rpt: PGS 23319-23320  
 ALL INFORMATION IS ON THE PLAT  
 DOUGLAS COUNTY  
 SURVEYOR

SHEET 1 OF 2

This plat constitutes the entire record of the retracement of a portion of the north boundary and subdivisional lines, Township 24 South, Range 3 West, Willamette Meridian, Oregon.

The directions of the lines are based on the true meridian as determined by Global Positioning Systems (GPS) techniques and direct solar observations and carried forward by sustained angulation using conventional survey techniques. All measurements along the lines were derived through the use of GPS and conventional survey techniques. Measured distances and directions have been adjusted by computer software that incorporates a least squares adjustment routine. The adjusted mean bearings and mean horizontal ground elevation distances are reported to the nearest second and 0.01 foot at 2200 feet elevation.

Official areas based on the measurements of this survey have been returned for Federal interest land where indicated. Aliquot part legal subdivisions retain their aliquot characteristics and refer to precisely the same land as that which was previously identified by its original survey or description. A lot can only be subdivided by survey or supplemental plat. Except as indicated hereon, the lottings and areas are as shown on the plat approved May 19, 1884 and December 3, 1951, and the plat accepted February 4, 1998.

The lines of the official original surveys and resurveys were retraced and search was made for all corners, lines, and other calls of record. The retracement data were thoroughly verified and only the true line field data are given hereon.

Each new bearing tree has a 2 1/2 inch x 1/4 inch magnetic nail (Mag Nail) driven at the base on right side center, unless otherwise noted in the corner description. Only those lines bounding Federal interest land were blazed.

The geographic positions shown hereon were determined by ties from temporary GPS control points utilizing dual frequency, carrier phase GPS receivers, and processed using the National Geodetic Survey's Online Positioning User Service (OPUS).

The survey was executed in accordance with the specifications set forth in the Manual of Surveying Instructions (2009), and the special instructions approved April 28, 2010, for Group No. 2500, Administrative File No. 1408, Oregon, by Richard J. Dieckmann, Cadastral Surveyor, beginning July 30, 2014, and completed August 11, 2014. He was assisted by Luke A. Chapman, Robert NMI Durning, and Marc A. Montpas, Surveying Technicians.

The history of official surveys pertaining to this retracement is as follows:

In 1883, James P. Currin, U.S. Deputy Surveyor, surveyed the north boundary, as shown on the official plat of survey approved June 30, 1883.

In 1883, Leban H. Wheeler, U.S. Deputy Surveyor, surveyed the west boundary and a portion of the subdivisional lines, as shown on the official plat of survey approved May 19, 1884.

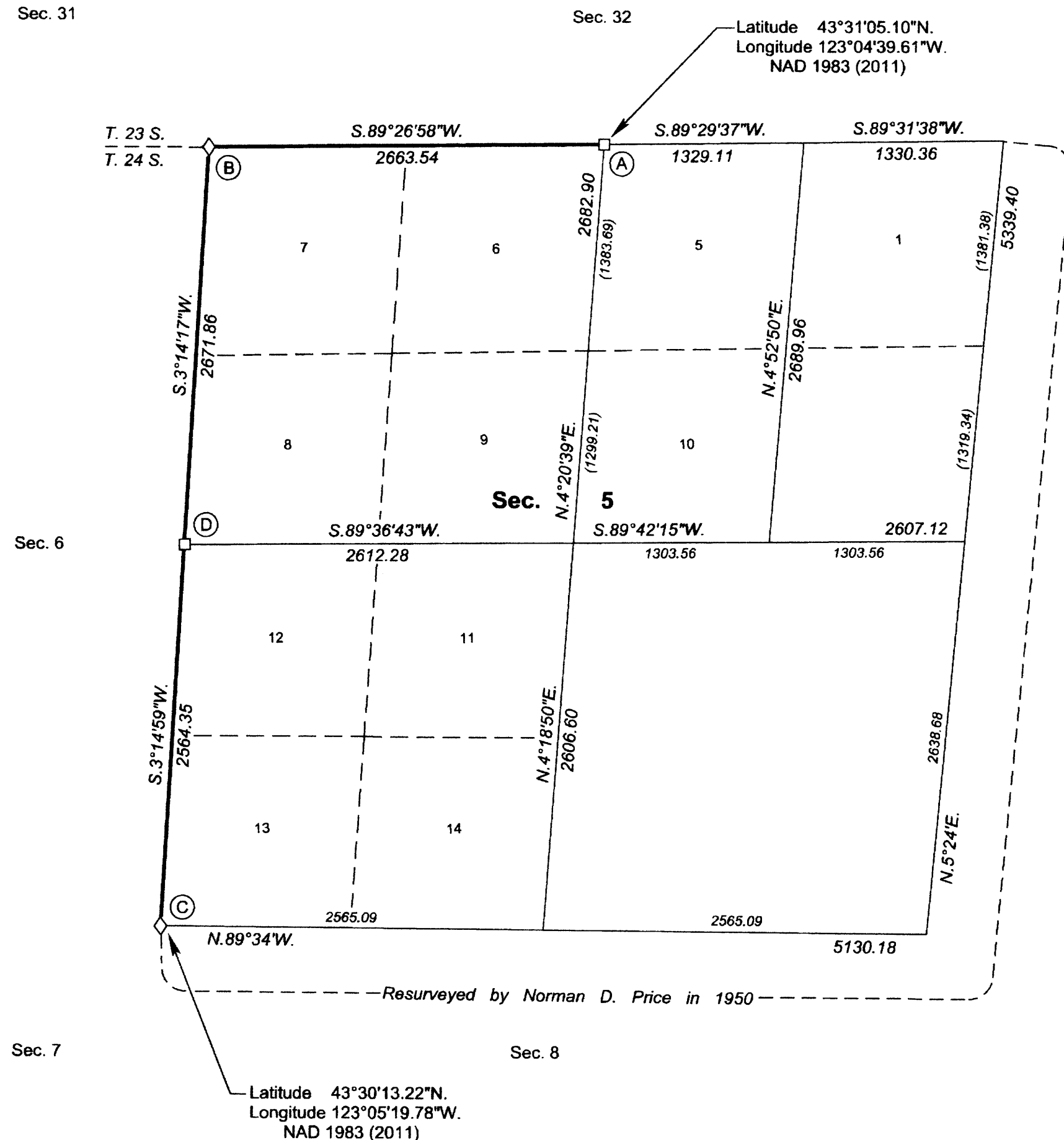
In 1950, Norman D. Price, Cadastral Engineer, resurveyed a portion of the north boundary and subdivisional lines, as shown on the official plat of survey accepted December 3, 1951.

In 1994, Bryan S. Seibold, Cadastral Surveyor, and Robert H. Browning, Surveying Technician, resurveyed a portion of the north boundary and subdivided section 5, as shown on the official plat of survey accepted February 4, 1998.

In 2012, George M. Winter, Cadastral Surveyor, resurveyed a portion of the west boundary and subdivisional lines, as shown on the official plat of survey accepted November 13, 2013.

The following local surveys filed in the Douglas County Surveyor's Office are referred to in the subsequent corner descriptions and are referenced by surveyor's last name, Professional Land Surveyor (PLS) No., and year.

Date	Name and Registration Number	File Number
1958	Marion D. Hale, PLS No. 243	C.S. 53/111
1960	Marion D. Hale, PLS No. 243	C.S. 53/111
1979	Donald L. Peel, PLS No. 752	M80-57



LEGAL SUBDIVISION	OFFICIAL ACRES
SECTION 5	
LOT 5	41.29
LOT 6	41.62
LOT 7	40.90
LOT 8	40.03
LOT 9	39.52
LOT 10	39.65
LOT 11	38.54
LOT 12	38.25
LOT 13	38.00
LOT 14	38.24
TOTAL AREA	396.04
FEDERAL INTEREST LAND RESURVEYED IN SECTION 5	

NOTE: Unless otherwise noted, the lightweight lines with bearings and distances were surveyed by Bryan S. Seibold and Robert H. Browning in 1994, and were utilized to calculate the Federal interest land in section 5.

LEGEND	
◇	Original corner previously remonumented
□	Corner previously established or reestablished

UNITED STATES DEPARTMENT OF THE INTERIOR  
 BUREAU OF LAND MANAGEMENT

Portland, Oregon

The survey represented by this plat, having been correctly executed in accordance with the requirements of law and the regulations of this Bureau, is hereby accepted.

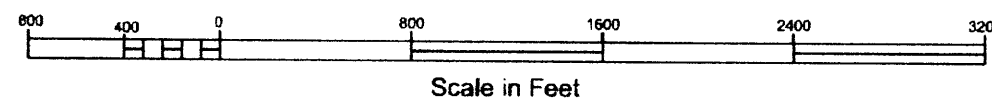
For the Director  
*Mary J. M. Hartz*  
 Chief Cadastral Surveyor of Oregon

*December 18, 2015*  
 Date

I, Richard J. Dieckmann, Cadastral Surveyor, HEREBY CERTIFY upon honor, that in pursuance of special instructions bearing the approval date of the 28th day of April, 2010, and the assignment instructions bearing the date of the 28th day of July, 2014, I have retraced a portion of the north boundary and subdivisional lines, Township 24 South, Range 3 West, Willamette Meridian, Oregon, which is represented upon this plat as having been executed by me and under my direction; and that said survey has been made in strict conformity with said special instructions, the Manual of Surveying Instructions, and in the specific manner described on this plat.

*Richard J. Dieckmann*  
 Cadastral Surveyor

*December 15<sup>th</sup>, 2015*  
 Date



OFFICIALLY FILED: 2/19/2016

# TOWNSHIP 24 SOUTH, RANGE 3 WEST, OF THE WILLAMETTE MERIDIAN, OREGON

## RETRACEMENT

Date: 3/21/2016 By: JC  
 This survey consists of:  
 Map: PLAT: T24-3 2016-1 A-B  
 Narrative: VOL 58  
 Corner Rpt: PGS 23319-23320  
 ALL INFORMATION IS ON THE PLAT  
**DOUGLAS COUNTY**  
**SURVEYOR**

SHEET 2 OF 2

OFFICIALLY FILED: 2/19/2016

(A) The 1/4 sec. cor. of secs. 5 and 32, on the N. bdy. of the Tp., monumented with an iron post, 1 in. diam., firmly set, projecting 3 ins. above the ground, with a brass cap mkd.

S 32
1/4
S 5
1950

from which the remains of bearing trees mkd. by Price in 1950 and reported by Seibold and Browning in 1994

A sawed, decayed fir stump, 48 ins. diam., bears N. 29 3/4° E., 17.8 ft. dist., with scribe marks 1/4 S32 visible on an opened blaze.

A sawed, decayed fir stump, 30 ins. diam., bears S. 1 1/2° E., 86.5 ft. dist., with no marks visible. (Record, S. 1° W.)

and remains of reference trees mkd. by Hale, PLS No. 243, in 1958, reported as by person(s) unknown by Seibold and Browning in 1994

A decayed fir stump, 52 ins. diam., bears S. 14 3/4° E., 34.3 ft. dist., with no marks visible.

A decayed fir stump, 48 ins. diam., bears N. 26 1/4° W., 31.7 ft. dist., with no marks visible.

and new bearing trees

A fir, 20 ins. diam., bears S. 34 1/2° W., 19.3 ft. dist., mkd. 1/4 S5 BT.

A fir, 7 ins. diam., bears N. 42 1/2° W., 32.8 ft. dist., mkd. 1/4 S32 BT.

(Note: The bearing trees mkd. by Seibold and Browning in 1994, are now downed and their original positions could not be determined.)

(B) The cor. of secs. 5, 6, 31, and 32, on the N. bdy. of the Tp., perpetuated by Hale, PLS No. 243, in 1958, and Peel, PLS No. 752, in 1979, monumented with an iron post, 2 ins. diam., firmly set, projecting 4 ins. above the ground, with a brass cap mkd.

T 23 S	R 3 W
S 31	S 32
S 6	S 5
T 24 S	
1950	

from which the remains of a bearing tree mkd. by Price in 1950

A yew stump, 18 ins. diam., bears N. 38 1/2° E., 32.3 ft. dist., with no marks visible.

and remains of bearing trees mkd. by Hale

A decayed fir stump, 60 ins. diam., bears N. 11 1/4° E., 55.6 ft. dist., with no marks visible.

A decayed fir stump, 54 ins. diam., bears S. 69° W., 56.3 ft. dist., with no marks visible.

A fir stump, 49 ins. diam., bears N. 26 1/2° W., 47.2 ft. dist., with no marks visible.

and remains of a bearing tree mkd. by Peel

A fir stump, 20 ins. diam., bears N. 51 3/4° E., 15.9 ft. dist., with a healed blaze.

and bearing trees mkd. by person(s) unknown

A fir, 14 ins. diam., bears S. 29 1/2° E., 16.7 ft. dist., with no marks visible, and a Weyerhaeuser tag.

A fir, 14 ins. diam., bears S. 21 1/2° W., 14.2 ft. dist., with no marks visible and a Weyerhaeuser tag.

and new accessories

An iron rod, 30 ins. long, 5/8 in. diam., driven 25 ins. in the ground for a reference monument, bears N. 33° 27' 09" E., 14.75 ft. dist., with brass cap mkd. RM T23S R3W S32 14.7 FT TO COR 2014, and an arrow pointing to the cor.

An iron rod, 30 ins. long, 5/8 in. diam., driven 29 ins. in the ground for a reference monument, bears N. 50° 35' 32" W., 15.13 ft. dist., with brass cap mkd. RM T23S R3W S31 15.1 FT TO COR 2014, and an arrow pointing to the cor.

(C) The cor. of secs. 5, 6, 7, and 8, monumented with an iron post, 2 ins. diam., firmly set, projecting 12 ins. above the ground, with a brass cap mkd.

T 24 S	R 3 W
S 6	S 5
S 7	S 8
1950	

from which the remains of bearing trees mkd. by Price in 1950 and reported by Winter in 2012

A fir, 33 ins. diam., bears N. 88 3/4° E., 32.5 ft. dist., with a healed double blaze.

A decayed fir stump, 62 ins. diam., bears S. 45 1/2° E., 5.9 ft. dist., with axe marks visible.

A decayed cedar stump, 40 ins. diam., bears N. 12 1/2° W., 46.2 ft. dist., with no marks visible.

and bearing trees mkd. by Winter in 2012

A fir, 10 ins. diam., bears S. 57 3/4° E., 34.9 ft. dist., with scribe marks T24S R3W S8 BT visible on a partially healed blaze. (Record, S. 59 3/4° E., 33.9 ft.)

A hemlock, 5 ins. diam., bears S. 50 1/4° W., 27.1 ft. dist., with scribe marks T24S R3W S7 BT visible on a partially healed blaze.

A fir, 6 ins. diam., bears N. 62 1/2° W., 19.2 ft. dist., with scribe marks T24S R3W S6 BT visible on a partially healed blaze.

(D) The 1/4 sec. cor. of secs. 5 and 6, monumented with an iron post, 2 1/2 ins. diam., firmly set, projecting 3 ins. above the ground, with a brass cap mkd.

T 24 S	R 3 W
1/4	
S 6	S 5
1994	

from which the remains of bearing trees mkd. by Price in 1950 and reported by Seibold and Browning in 1994

A fir, 20 ins. diam., bears N. 77 1/4° E., 5.3 ft. dist., with a healed blaze.

A sawed, decayed fir stump, 11 ins. diam., bears N. 32° W., 21.8 ft. dist., with scribe marks BT visible on an opened blaze.

and a bearing tree mkd. by Hale, PLS No. 243, in 1960 and reported by Seibold and Browning in 1994

A fir, 16 ins. diam., bears S. 32 3/4° E., 17.2 ft. dist., with axe marks visible. (Record, person(s) unknown)

and a bearing tree mkd. by Hale, PLS No. 243, in 1960

A sawed, decayed fir stump, 24 ins. diam., bears N. 24° W., 19.3 ft. dist., with axe marks visible.

and a new bearing tree

A fir, 6 ins. diam., bears N. 66° W., 7.8 ft. dist., mkd. 1/4 S6 BT.

UNITED STATES DEPARTMENT OF THE INTERIOR  
 BUREAU OF LAND MANAGEMENT

Portland, Oregon

The survey represented by this plat, having been correctly executed in accordance with the requirements of law and the regulations of this Bureau, is hereby accepted.

For the Director

*Mary J. M. Hault*  
 Chief Cadastral Surveyor of Oregon

*December 18, 2015*

Date