

TOWNSHIP 24 SOUTH, RANGE 3 WEST, OF THE WILLAMETTE MERIDIAN, OREGON

DEPENDENT RESURVEY AND SUBDIVISION OF SECTION 17

FILED
 Date: 2/5/2014 By: JC
 This survey consists of:
 Map: T24-3W 2014-1
 Narrative: VOL. 58 PAGES
 Gomer Rep: 23012-23023

DOUGLAS COUNTY
 SURVEYOR

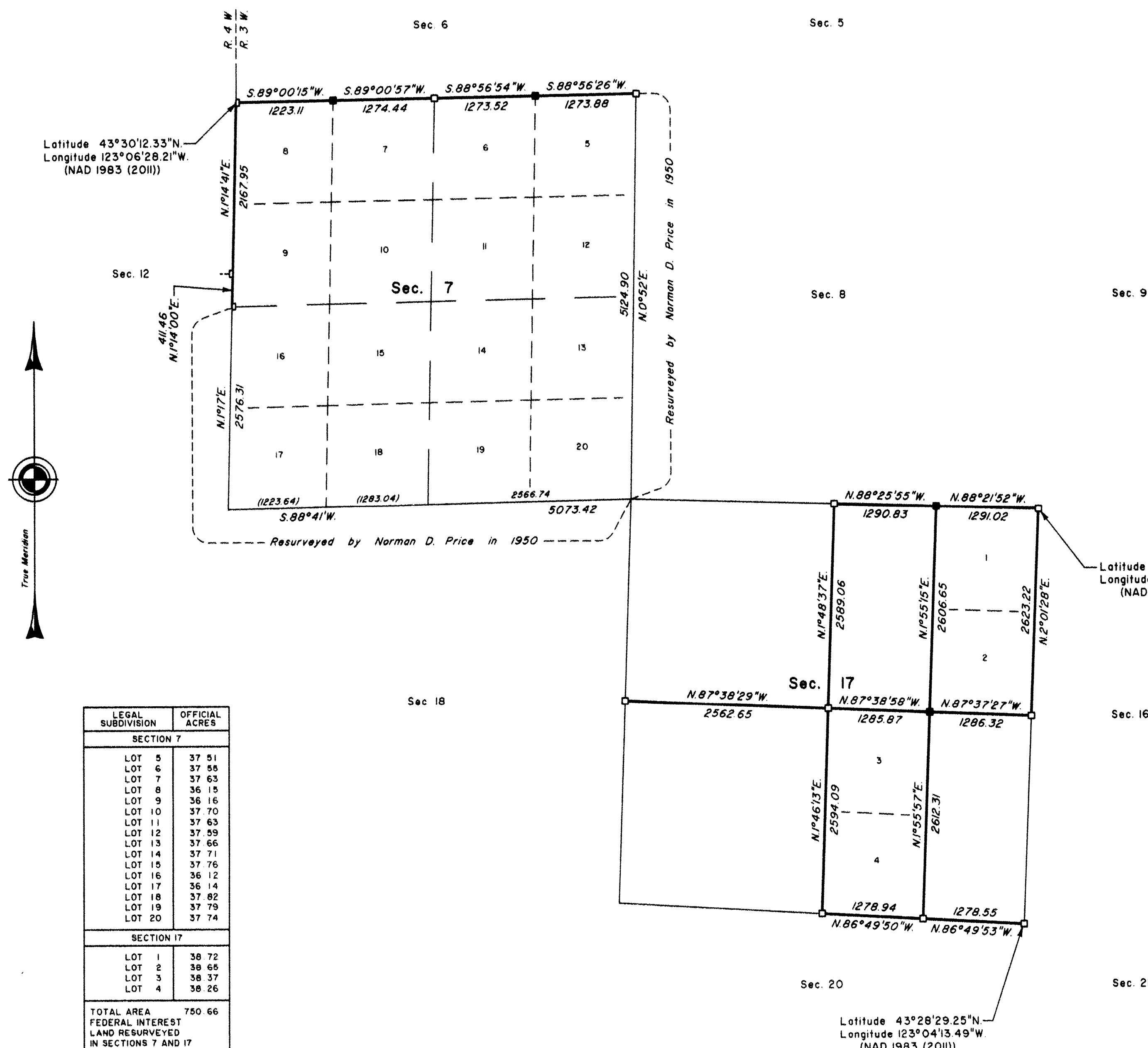
A history of surveys, corner descriptions, and other relevant information are contained in the field notes.

This plat represents the dependent resurvey of a portion of the west boundary and subdivisional lines, designed to restore the corners in their true original locations according to the best available evidence, and the subdivision of section 17, Township 24 South, Range 3 West, Willamette Meridian, Oregon.

Official areas based on the measurements of this survey have been returned for Federal interest land where indicated. Aliquot part legal subdivisions retain their aliquot characteristics and refer to precisely the same land as that which was previously identified by its original survey or description. A lot can only be subdivided by survey or supplemental plat. Except as indicated hereon, the lottings and areas are as shown on the plat approved April 26, 1872, and plat accepted December 3, 1951.

Survey executed by George M. Winter, Cadastral Surveyor, beginning July 26, 2012, and completed October 29, 2012, pursuant to special instructions approved July 19, 2012, for Group No. 2655, Oregon.

OFFICIALLY FILED: 12/24/2013



Latitude 43°30'12.33"N
 Longitude 123°06'28.21"W
 (NAD 1983 (2011))

Latitude 43°29'21.09"N
 Longitude 123°04'10.92"W
 (NAD 1983 (2011))

Latitude 43°28'29.25"N
 Longitude 123°04'13.49"W
 (NAD 1983 (2011))

LEGAL SUBDIVISION	OFFICIAL ACRES
SECTION 7	
LOT 5	37.51
LOT 6	37.55
LOT 7	37.63
LOT 8	36.15
LOT 9	36.16
LOT 10	37.70
LOT 11	37.63
LOT 12	37.99
LOT 13	37.66
LOT 14	37.71
LOT 15	37.76
LOT 16	36.12
LOT 17	36.14
LOT 18	37.82
LOT 19	37.79
LOT 20	37.74
SECTION 17	
LOT 1	38.72
LOT 2	38.65
LOT 3	38.37
LOT 4	38.26
TOTAL AREA	750.66
FEDERAL INTEREST LAND RESURVEYED IN SECTIONS 7 AND 17	

LEGEND

- Corner previously established or reestablished
- Corner previously established or reestablished; remonumented this survey

UNITED STATES DEPARTMENT OF THE INTERIOR
 BUREAU OF LAND MANAGEMENT
 Portland, Oregon

This plat is strictly conformable to the approved field notes, and the survey, having been correctly executed in accordance with the requirements of law and the regulations of this Bureau, is hereby accepted.

For the Director
Mary J. M. Hartzel
 Chief Cadastral Surveyor of Oregon

November 19, 2013
 Date

