

TOWNSHIP 24 SOUTH, RANGE 3 WEST, OF THE WILLAMETTE MERIDIAN, OREGON.  
DEPENDENT RESURVEY AND SUBDIVISION

Sec. 30

Sec. 29

This plat represents a retracement and reestablishment of a portion of the boundaries of Section 31, designed to restore the corners in their true original location according to the best available evidence, and a survey of the subdivisions of the section. The lotting and areas are as shown on the plat approved April 26, 1872.

South boundary surveyed by John Littrell in 1867.

South boundary and subdivisional lines surveyed, and south boundary resurveyed by William H. Byars in 1872.

South boundary resurveyed by N. D. Price in 1943 and 1944.

West boundary surveyed by Gordon and Gardner in 1855.

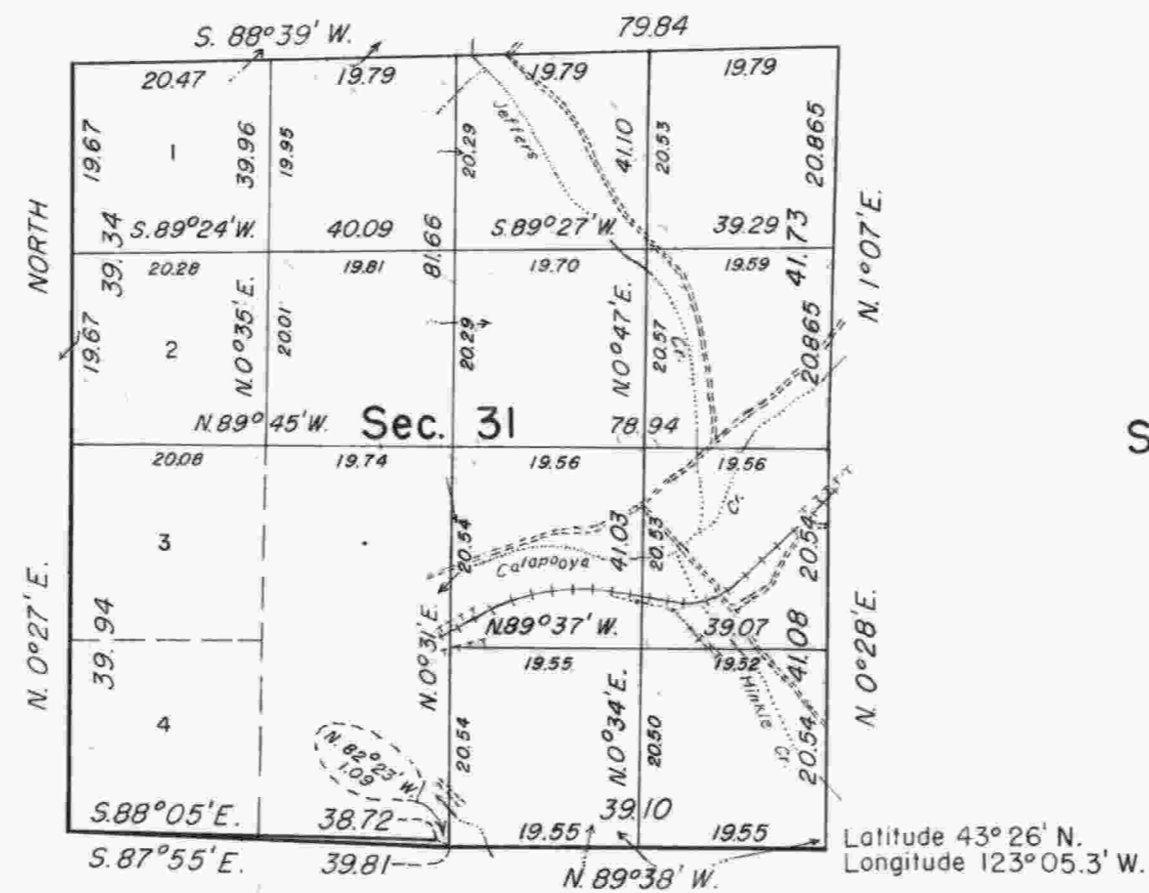
West boundary resurveyed by N. D. Price in 1950.

Dependent resurvey of a portion of the section boundaries and subdivision of Section 31, executed by William W. Glenn, September 15 to October 13, 1958, under Special Instructions dated September 3, 1958, which provide for the surveys included under Group No. 416, Oregon.

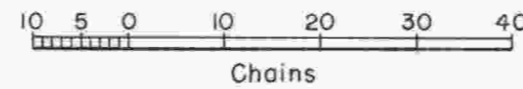


Mean magnetic declination 19°46' East

The dominant timber is Douglas fir, mixed with stands of hemlock, cedar, maple, madrone, alder, and yew.



Latitude 43° 26' N.  
Longitude 123° 05.3' W.



Area resurveyed: 482.11 acres

UNITED STATES DEPARTMENT OF THE INTERIOR  
BUREAU OF LAND MANAGEMENT  
Washington, D.C. September 26, 1960

This plat is strictly conformable to the approved field notes, and the survey, having been correctly executed in accordance with the requirements of law and the regulations of this Bureau, is hereby accepted.

For the Director

Cadastral Engineering Staff Officer