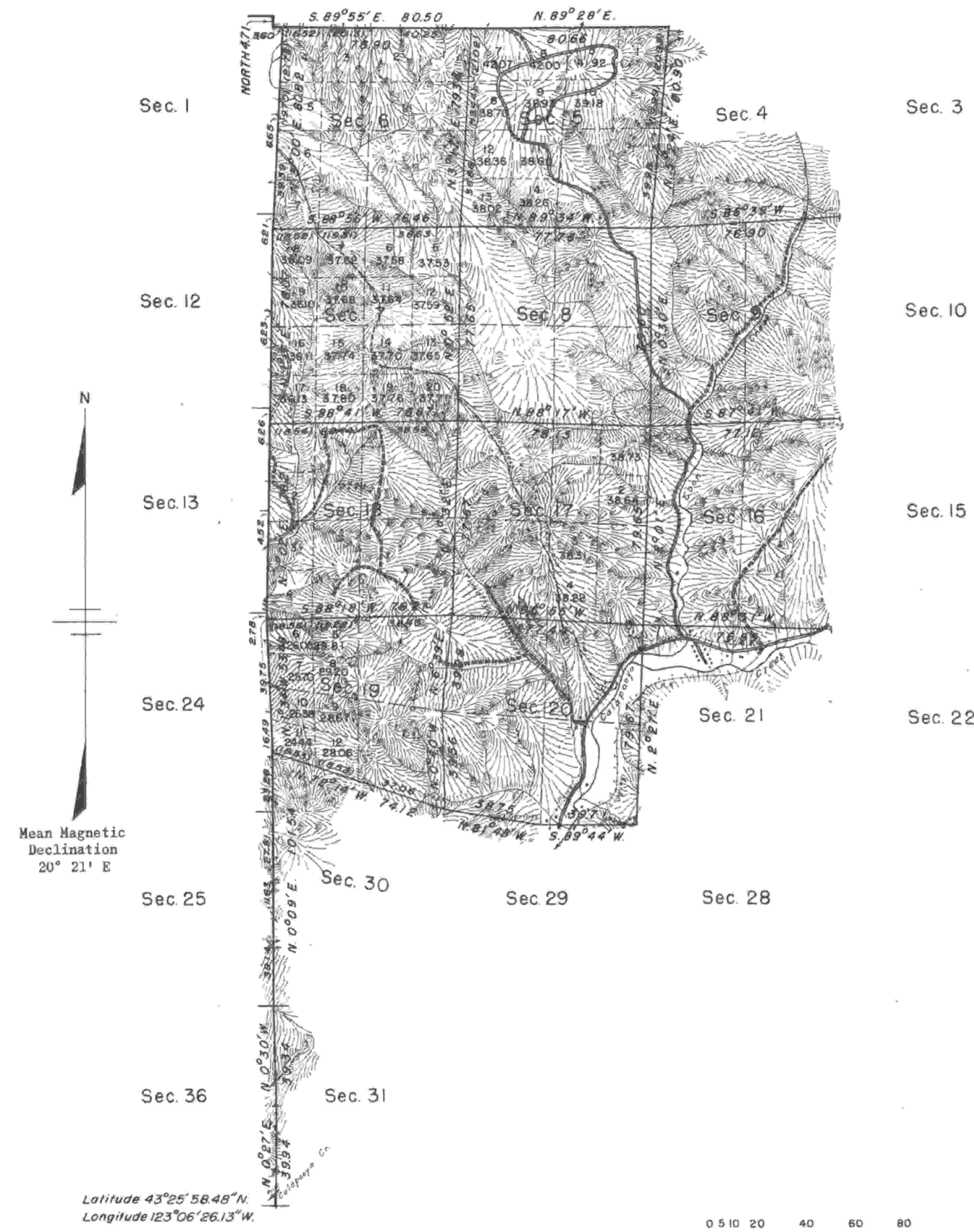


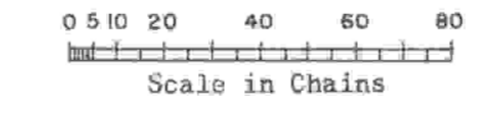
# TOWNSHIP 24 SOUTH, RANGE 3 WEST, OF THE WILLAMETTE MERIDIAN, OREGON. DEPENDENT RESURVEY



This plat represents a retracement and reestablishment of portions of the original township boundary and subdivisional lines designed to restore the corners in their original locations according to the best available evidence. The lottings and areas are as shown on the plats approved April 26, 1872 and May 19, 1884 except as new areas are shown hereon.

A heavy stand of fir, hemlock, cedar, maple, alder, yew, madrona, chinquapin and dogwood is found over most of this area.

Mean Magnetic Declination  
20° 21' E



Area Resurveyed: 5,596.82 Acres

UNITED STATES DEPARTMENT OF THE INTERIOR  
BUREAU OF LAND MANAGEMENT  
Washington, D. C., December 3, 1951

This plat is strictly conformable to the approved field notes, and the survey, having been correctly executed in accordance with the requirements of law and the regulations of this Bureau, is hereby accepted.

For the Director  
*William F. Richards*  
Chief, Branch of Surveys

Dependent resurvey of the west boundary, portion of the north boundary and portion of the subdivisional lines executed by Norman D. Price June 8 to August 10, 1950 under Special Instructions for Group 242 Oregon, dated April 5, 1940.