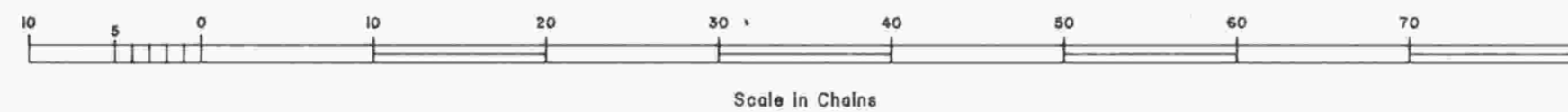
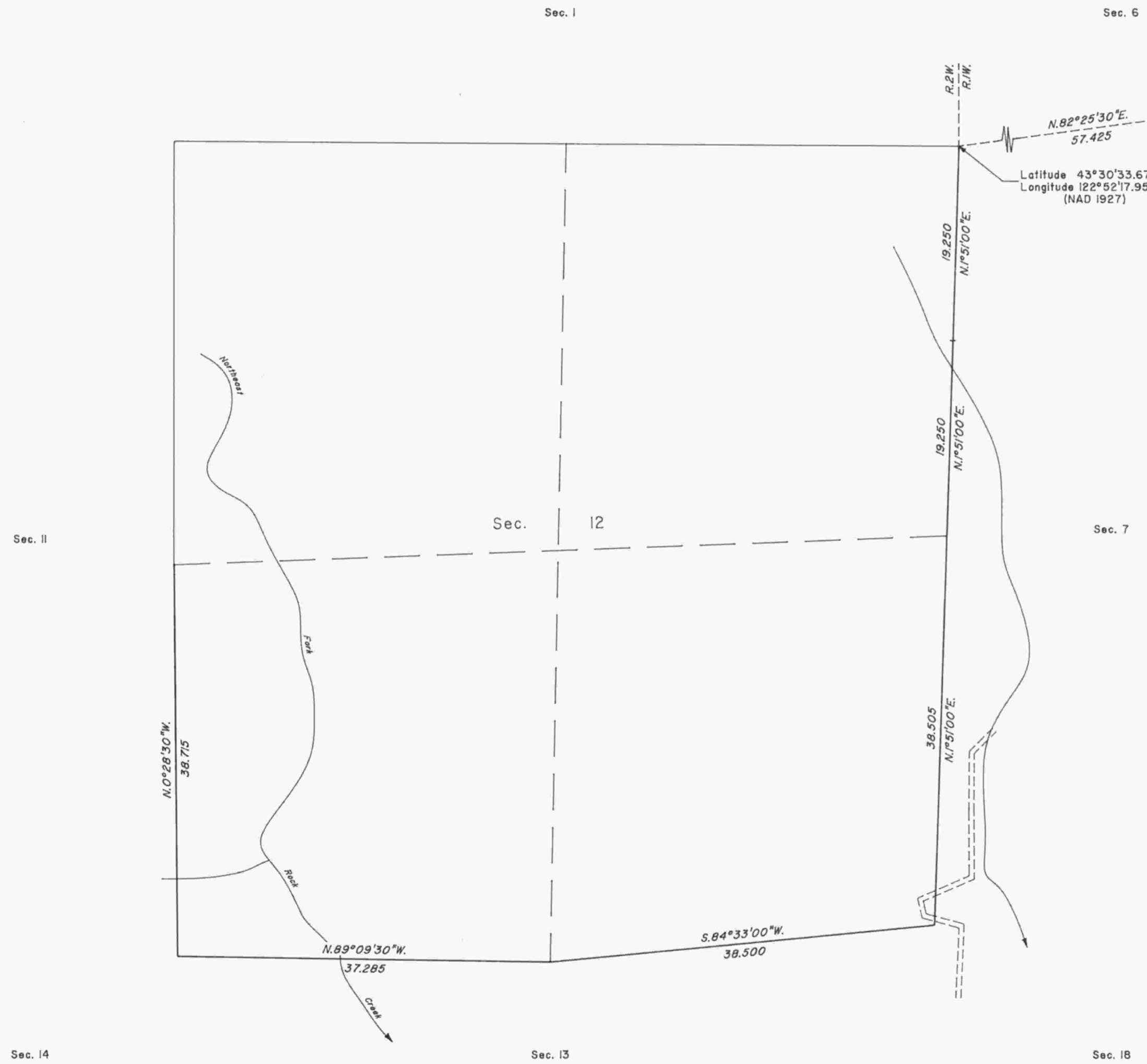


TOWNSHIP 24 SOUTH, RANGE 2 WEST, OF THE WILLAMETTE MERIDIAN, OREGON

DEPENDENT RESURVEY



A history of surveys is contained in the field notes.

This plat represents a dependent resurvey of a portion of the east boundary and subdivisional lines, T. 24 S., R. 2 W., Willamette Meridian, Oregon.

The lottings and areas are as shown on the plat approved January 17, 1895.

The survey was executed by Dale T. Bedell, Cadastral Surveyor, beginning May 1, 1990, and completed May 21, 1990, pursuant to Special Instructions dated April 2, 1990, under Group Number 1533, Oregon.

Timber in this area consists of fir, hemlock, cedar, yew, oak and madrone.

UNITED STATES DEPARTMENT OF THE INTERIOR
BUREAU OF LAND MANAGEMENT

Portland, Oregon May 17, 1993

This plat is strictly conformable to the approved field notes, and the survey, having been correctly executed in accordance with the requirements of law and the regulations of this Bureau, is hereby accepted.

For the Director

Wayne M. Hardner
Chief Cadastral Surveyor of Oregon