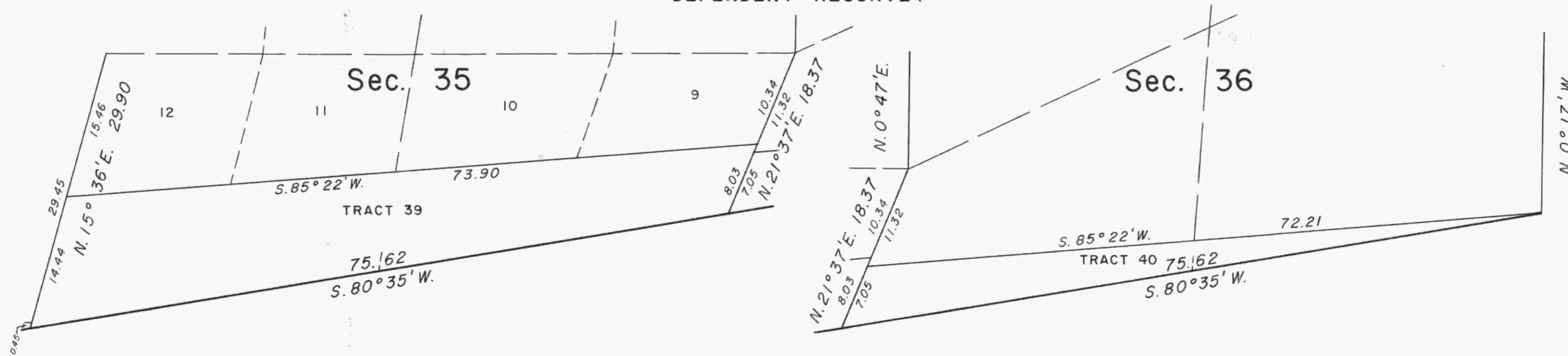
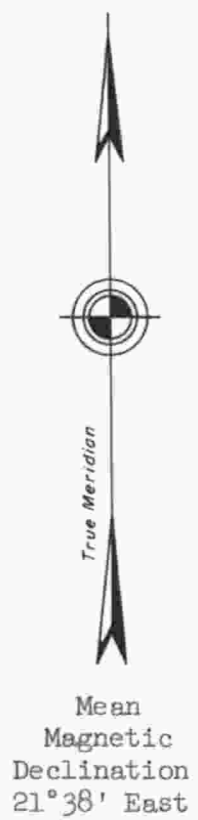
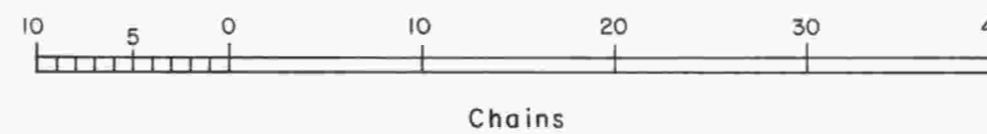


# TOWNSHIP 24 SOUTH, RANGE 2 WEST, OF THE WILLAMETTE MERIDIAN, OREGON.

DEPENDENT RESURVEY



ENLARGED DIAGRAMS



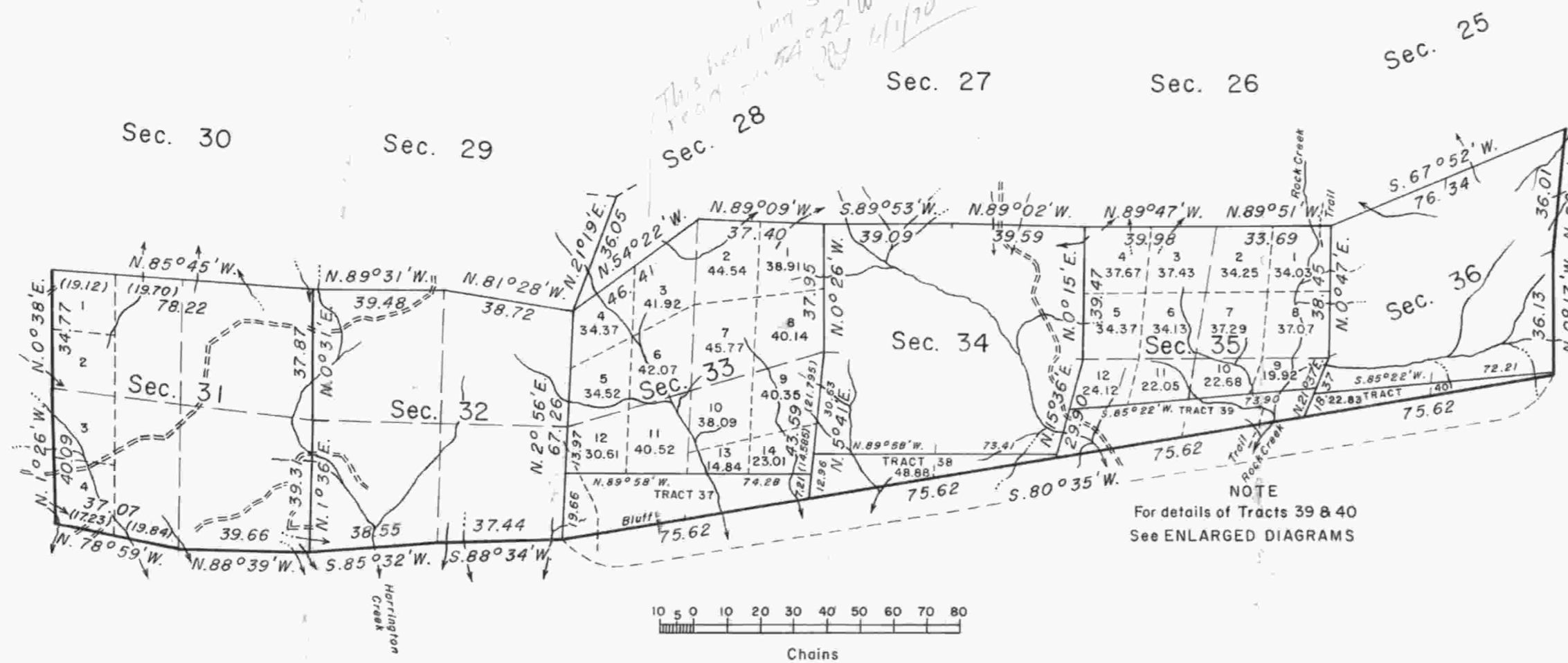
This plat represents a retracement and reestablishment of the south boundary, portions of the east and west boundaries, and a portion of the subdivisional lines, designed to restore the corners in their true original locations according to the best available evidence. Tracts 37, 38, 39, and 40, were surveyed in accordance with the decree of the United States District Court for the District of Oregon, Civil No. 60-135, dated June 14, 1963.

The following described tracts were created and thus ownership status determined by decree of the United States District Court for the District of Oregon, Civil No. 60-135, dated June 14, 1963.

- Tract 37 - Private
- Tract 38 - United States of America
- Tract 39 - Private
- Tract 40 - United States of America

The south boundary was surveyed by John A. McQuinn, in 1883. The east boundary was surveyed by John A. McQuinn, in 1883, and retraced by Carl S. Nicklin, in 1896. The west boundary was surveyed by W. H. Byars, in 1871. The township was subdivided by John A. McQuinn, in 1883, and Henry L. Chandler, in 1894.

The dependent resurvey and surveys as shown by this plat were executed under Special Instructions dated June 12, 1950, and Director's memorandum to State Director, Oregon, dated June 18, 1963, Group 294, Oregon. The resurvey and surveys were performed by Levi E. Tallett and C. Albert White, beginning May 24, 1951, and completed August 13, 1963.



Area resurveyed: ~~3,569.18~~ Acres  
3607.03  
RESL

Timber in this area consists of Douglas fir, hemlock, cedar, madrone, and yew.

Latitude 43° 26' 29" N.  
Longitude 122° 52' 33" W.

UNITED STATES DEPARTMENT OF THE INTERIOR  
BUREAU OF LAND MANAGEMENT  
Washington, D. C. November 2, 1964

NOTE  
For details of Tracts 39 & 40  
See ENLARGED DIAGRAMS

This plat is strictly conformable to the approved field notes, and a part of the survey having been executed in accordance with the requirements of law and the regulations of this Bureau and the balance in accordance with the decree of the United States District Court for the District of Oregon, Civil No. 60-135, dated June 14, 1963, is hereby accepted.

For the Director  
*Ed Pennington*  
Chief, Division of Engineering