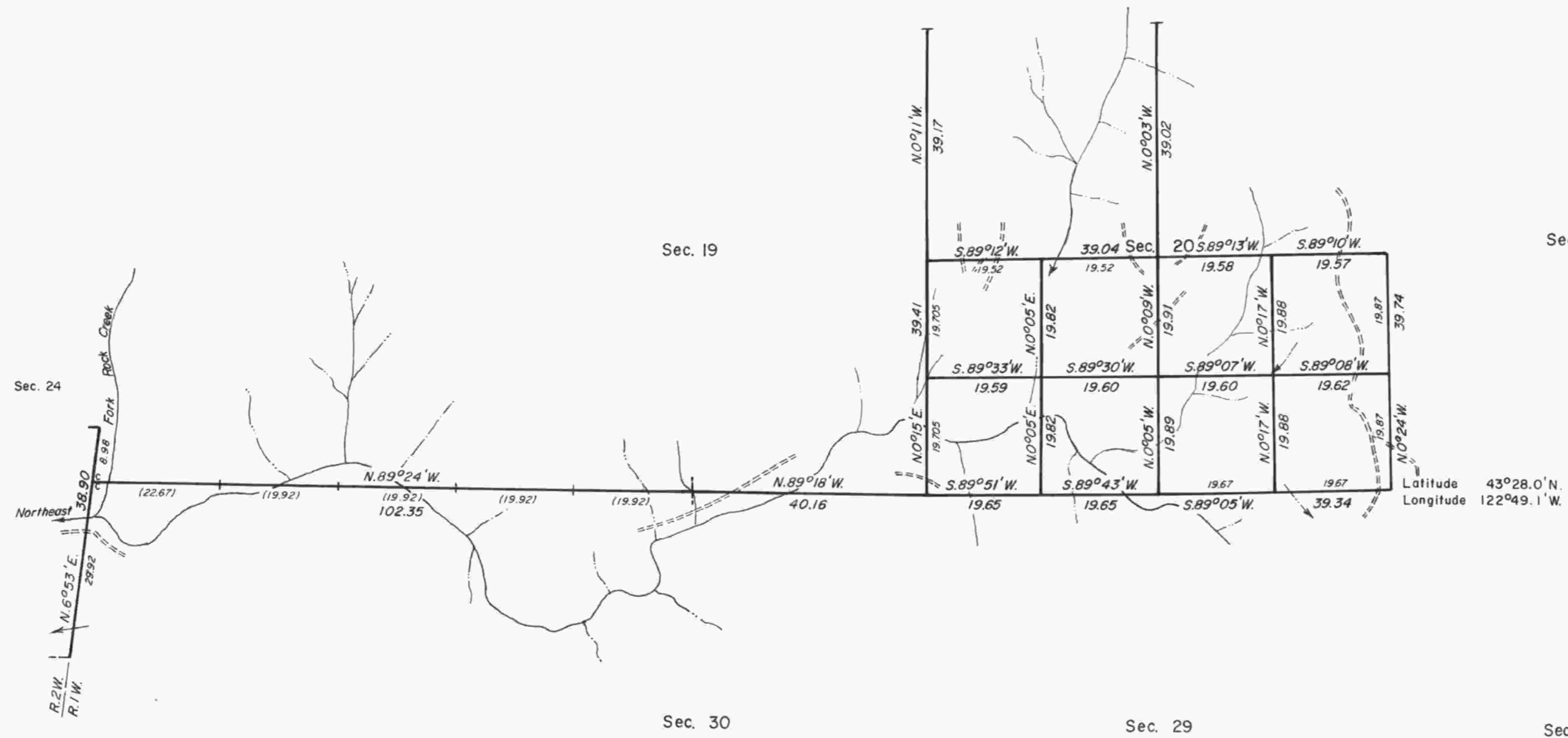


TOWNSHIP 24 SOUTH, RANGE 1 WEST, OF THE WILLAMETTE MERIDIAN, OREGON.

DEPENDENT RESURVEY AND SUBDIVISION OF SECTION 20



Sec. 25



A history of surveys is contained in the field notes.

This plat represents a dependent resurvey of a portion of the east boundary, T. 24 S., R. 2 W., and a portion of the subdivisional lines, T. 24 S., R. 1 W., Willamette Meridian, Oregon, designed to restore the corners in their true original locations according to the best available evidence, and the subdivision of section 20.

The lottings and areas are as shown on the plat approved August 10, 1897.

The survey was executed by James E. Jelley and Wayne L. Rogers, Cadastral Surveyors, beginning April 14, 1981, and completed September 15, 1982, pursuant to Special Instructions dated March 6, 1981, and Supplemental Special Instructions dated October 28, 1981, for Group No. 1051, Oregon.

Timber in this area consists of fir, yew, hemlock, cedar, maple, madrone, chinquapin, oak, and alder.

UNITED STATES DEPARTMENT OF THE INTERIOR
BUREAU OF LAND MANAGEMENT
Portland, Oregon June 8, 1984

This plat is strictly conformable to the approved field notes, and the survey, having been correctly executed in accordance with the requirements of law and the regulations of this Bureau, is hereby accepted.

For the Director

William W. Glesne

Chief Cadastral Surveyor of Oregon