

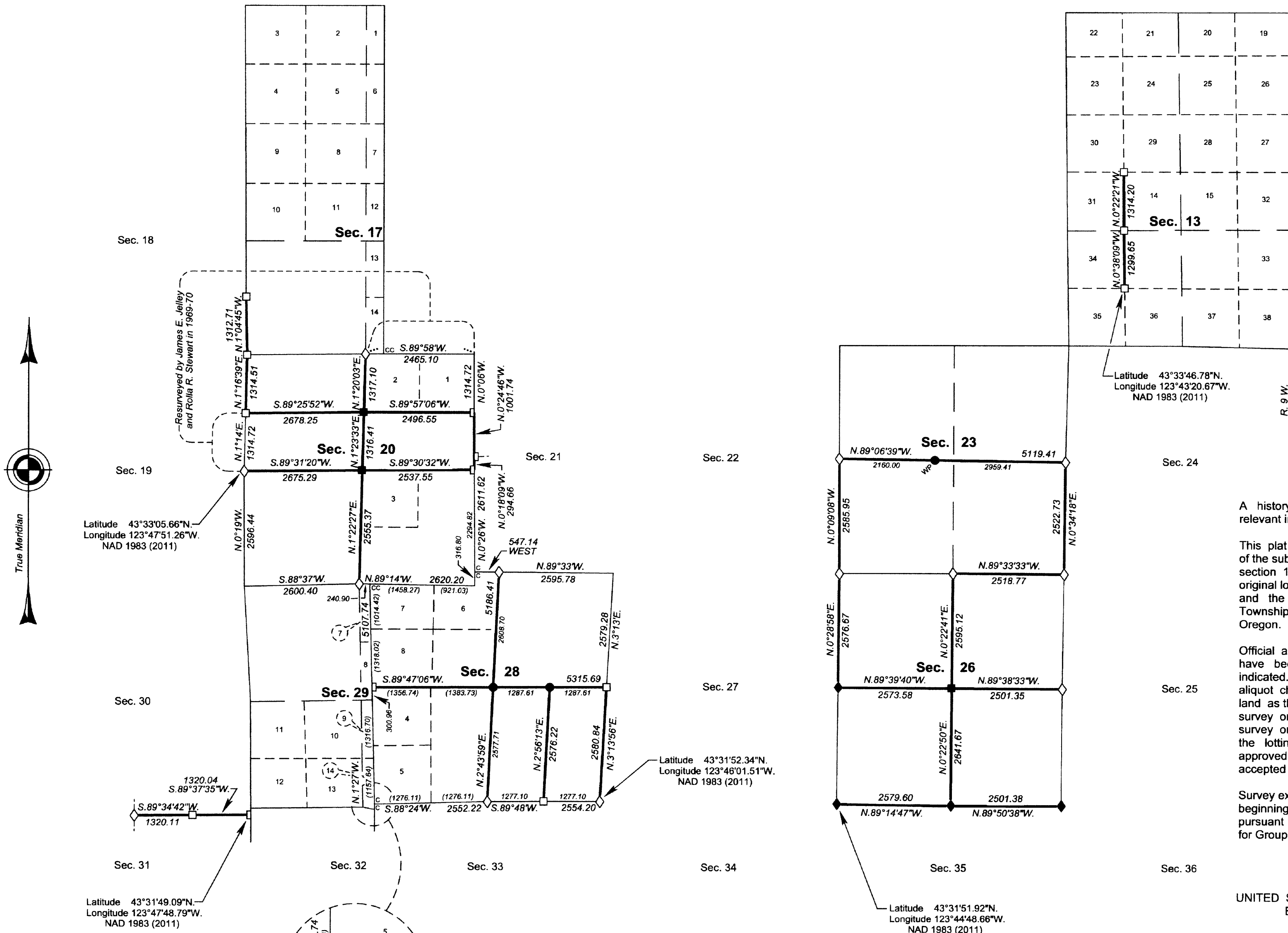
TOWNSHIP 23 SOUTH, RANGE 9 WEST, OF THE WILLAMETTE MERIDIAN, OREGON

DEPENDENT RESURVEY AND SUBDIVISION OF SECTIONS

DOUGLAS COUNTY
SURVEYOR

OFFICIALLY FILED: 1/13/2016

LEGAL SUBDIVISION	OFFICIAL ACRES
SECTION 20	
LOT 1	37.42
LOT 2	37.49
NE 1/4 SW 1/4	39.09
NW 1/4 SW 1/4	39.41
SW 1/4 SW 1/4	38.85
SE 1/4 SW 1/4	38.53
NE 1/4 SE 1/4	38.13
LOT 3	37.71
SW 1/4 SE 1/4	38.33
SE 1/4 SE 1/4	38.75
SECTION 28	
NE 1/4 NE 1/4	38.41
NW 1/4 NE 1/4	38.64
SW 1/4 NE 1/4	38.47
SE 1/4 NE 1/4	38.24
LOT 6	36.53
LOT 7	33.14
LOT 8	41.79
SE 1/4 NW 1/4	42.07
NE 1/4 SW 1/4	40.32
LOT 4	40.20
LOT 5	38.98
SE 1/4 SW 1/4	38.70
NW 1/4 SE 1/4	37.99
SW 1/4 SE 1/4	37.81
TOTAL AREA	925.00
FEDERAL INTEREST LAND RESURVEYED IN SECTIONS 20 AND 28	



A history of surveys, corner descriptions, and other relevant information are contained in the field notes.

This plat represents the dependent resurvey of a portion of the subdivisional lines and subdivision of section lines of section 13, designed to restore the corners in their true original locations according to the best available evidence, and the subdivision of sections 20, 23, 26, and 28, Township 23 South, Range 9 West, Willamette Meridian, Oregon.

Official areas based on the measurements of this survey have been returned for Federal interest land where indicated. Aliquot part legal subdivisions retain their aliquot characteristics and refer to precisely the same land as that which was previously identified by its original survey or description. A lot can only be subdivided by survey or supplemental plat. Except as indicated hereon, the lottings and areas are as shown on the plats approved July 26, 1879, and June 12, 1900, and plats accepted November 16, 1972, and June 19, 1980.

Survey executed by Edith M. Forkner, Cadastral Surveyor, beginning May 7, 2014, and completed May 11, 2015, pursuant to special instructions approved May 2, 2014, for Group No. 2756, Oregon.

UNITED STATES DEPARTMENT OF THE INTERIOR
BUREAU OF LAND MANAGEMENT

Portland, Oregon

This plat is strictly conformable to the approved field notes, and the survey, having been correctly executed in accordance with the requirements of law and the regulations of this Bureau, is hereby accepted.

For the Director

Mary J. M. Hunt

Chief Cadastral Surveyor of Oregon

November 2, 2015

Date

LEGEND

- ◇ Original corner previously remonumented
- ◆ Original corner remonumented this survey
- Corner previously established or reestablished
- Corner previously established or reestablished; remonumented this survey
- Corner established or reestablished this survey

NOTE:
Unless otherwise noted, the lightweight lines with bearings and distances shown were surveyed by Jack W. Bowder in 1977 and were utilized to calculate the areas of the Federal interest land in sections 20 and 28.

The parenthetical distances shown for the W 1/2 of the line between sections 28 and 33 on the plat by Jack W. Bowder in 1977 were incorrect. The correct parenthetical distances and areas for section 28, based upon the plat by Oscar F. Thiel in 1898-99, are shown on this plat.

