

TOWNSHIP 23 SOUTH, RANGE 9 WEST, OF THE WILLAMETTE MERIDIAN, OREGON

DEPENDENT RESURVEY AND SUBDIVISION OF SECTION 4

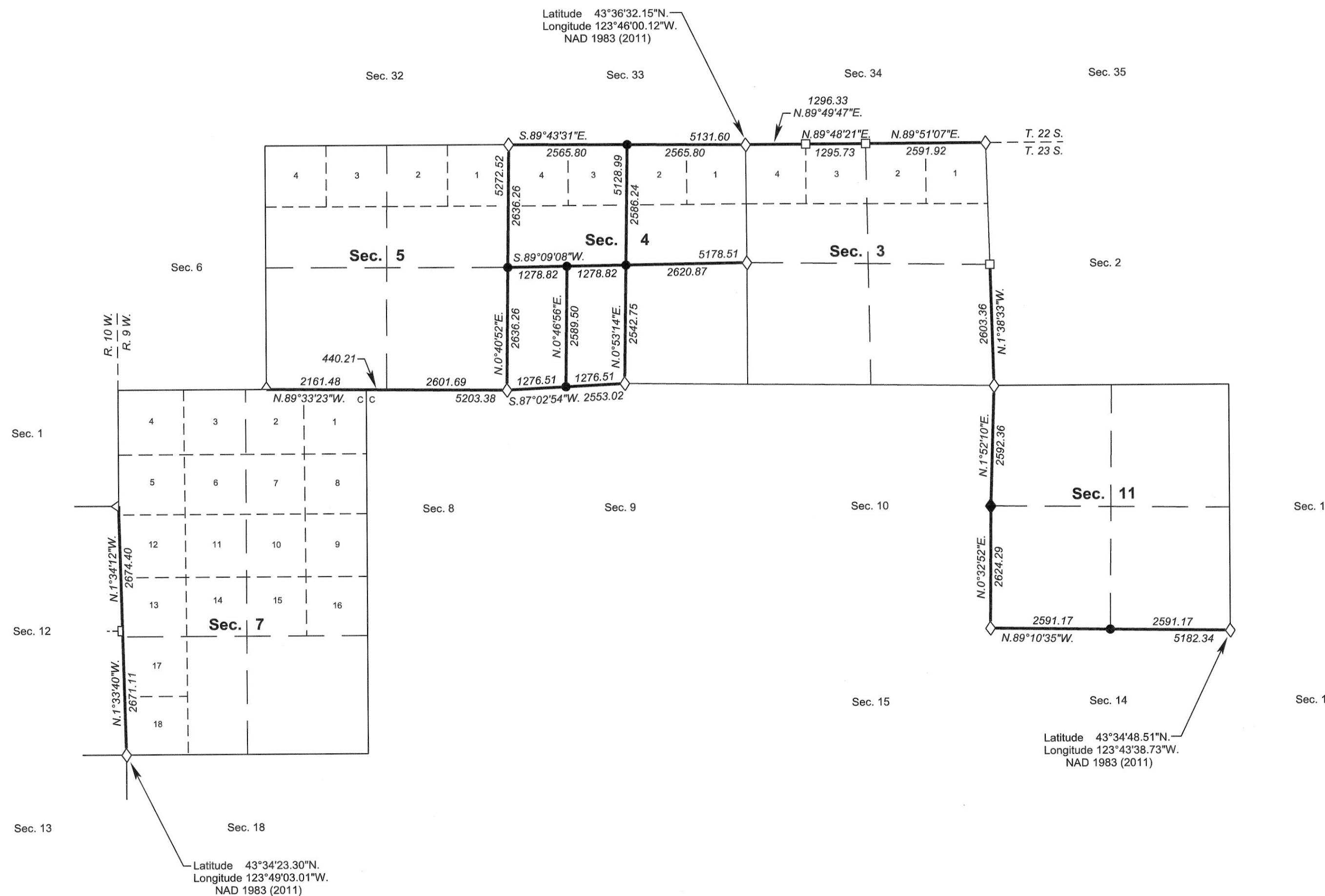
OFFICIALLY FILED: 7/17/2015

A history of surveys, corner descriptions, and other relevant information are contained in the field notes.

This plat represents the dependent resurvey of a portion of the south boundary, Township 22 South, Range 9 West, a portion of the east boundary, Township 23 South, Range 10 West, and a portion of the subdivisional lines, designed to restore the corners in their true original locations according to the best available evidence, and the subdivision of section 4, Township 23 South, Range 9 West, Willamette Meridian, Oregon.

Official area based on the measurements of this survey have been returned for Federal interest land where indicated. Aliquot part legal subdivisions retain their aliquot characteristics and refer to precisely the same land as that which was previously identified by its original survey or description. A lot can only be subdivided by survey or supplemental plat. Except as indicated hereon, the lottings and areas are as shown on the plats approved July 26, 1879, and June 12, 1900.

Survey executed by Joseph M. Mannix and Edith M. Forkner, Cadastral Surveyors, beginning October 22, 2013, and completed April 21, 2014, pursuant to special instructions approved September 10, 2013, for Group No. 2727, Oregon.



FILED
 Date: 9/21/2015 By: JC
 This survey consists of:
 Map: T23-9W 2015-1
 Narrative: VOL 58 PAGE
 Corner Rpt: 23207-23225
DOUGLAS COUNTY
SURVEYOR

LEGEND

- ◊ Original corner previously remonumented
- ◆ Original corner remonumented this survey
- Corner previously established or reestablished
- Corner established or reestablished this survey

UNITED STATES DEPARTMENT OF THE INTERIOR
BUREAU OF LAND MANAGEMENT

Portland, Oregon

This plat is strictly conformable to the approved field notes, and the survey, having been correctly executed in accordance with the requirements of law and the regulations of this Bureau, is hereby accepted.

For the Director

Mary J. M. Hartzel
Chief Cadastral Surveyor of Oregon

May 29, 2015
Date

LEGAL SUBDIVISION	OFFICIAL ACRES
SECTION 4	
E1/2 SW1/4	75.17
TOTAL AREA FEDERAL INTEREST LAND RESURVEYED IN SECTION 4	75.17

