

# TOWNSHIP 23 SOUTH, RANGE 9 WEST, OF THE WILLAMETTE MERIDIAN, OREGON

## DEPENDENT RESURVEY AND SUBDIVISION OF SECTION 19

Sec. 13

Sec. 18

Resurveyed by James E. Jelley and Rolla R. Steward in 1969-70

Sec. 24

Sec. 19

Sec. 20

Latitude 43°32'42.24"N.  
Longitude 123°48'56.59"W.  
(NAD 1927)

Surveyed by Jack W. Bowder in 1977

Sec. 30

S.49°31'53"W.  
58.368  
Sec. 25



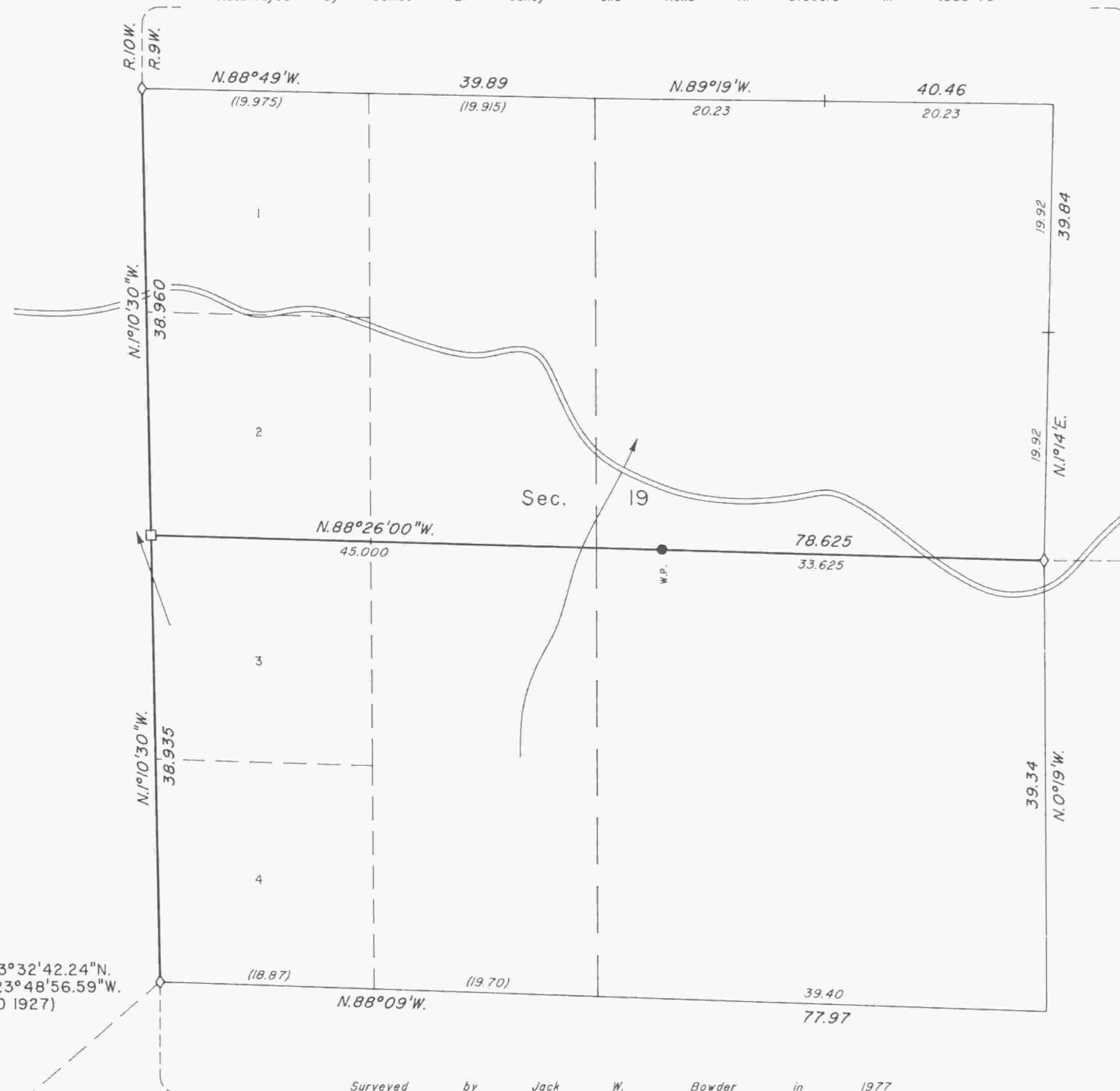
Mean magnetic declination 19° East

B.L.M.  
"EC 41189"  
1993



Scale in Chains

R. F. B.



A history of surveys is contained in the field notes.

This plat represents a dependent resurvey of a portion of the west boundary, T. 23 S., R. 9 W., Willamette Meridian, Oregon, designed to restore the corners in their true original locations according to the best available evidence, and the subdivision of section 19.

The lottings and areas are as shown on the plat approved July 26, 1879.

The survey was executed by John A. Farmer, Cadastral Surveyor, beginning September 25, 1995, and completed October 12, 1995, pursuant to Special Instructions dated August 28, 1995, under Group Number 1789, Oregon.

Timber in this area consists of fir, hemlock, cedar, alder, maple, chinquapin, and yew.

The tie to the geodetic control station is reported as mean bearing and sea level distance.

### LEGEND

- ◊ Original corner previously remonumented
- Corner previously established or reestablished
- Corner established or reestablished this survey

UNITED STATES DEPARTMENT OF THE INTERIOR  
BUREAU OF LAND MANAGEMENT

Portland, Oregon      September 22, 1997

This plat is strictly conformable to the approved field notes, and the survey, having been correctly executed in accordance with the requirements of law and the regulations of this Bureau, is hereby accepted.

For the Director

Chief Cadastral Surveyor of Oregon