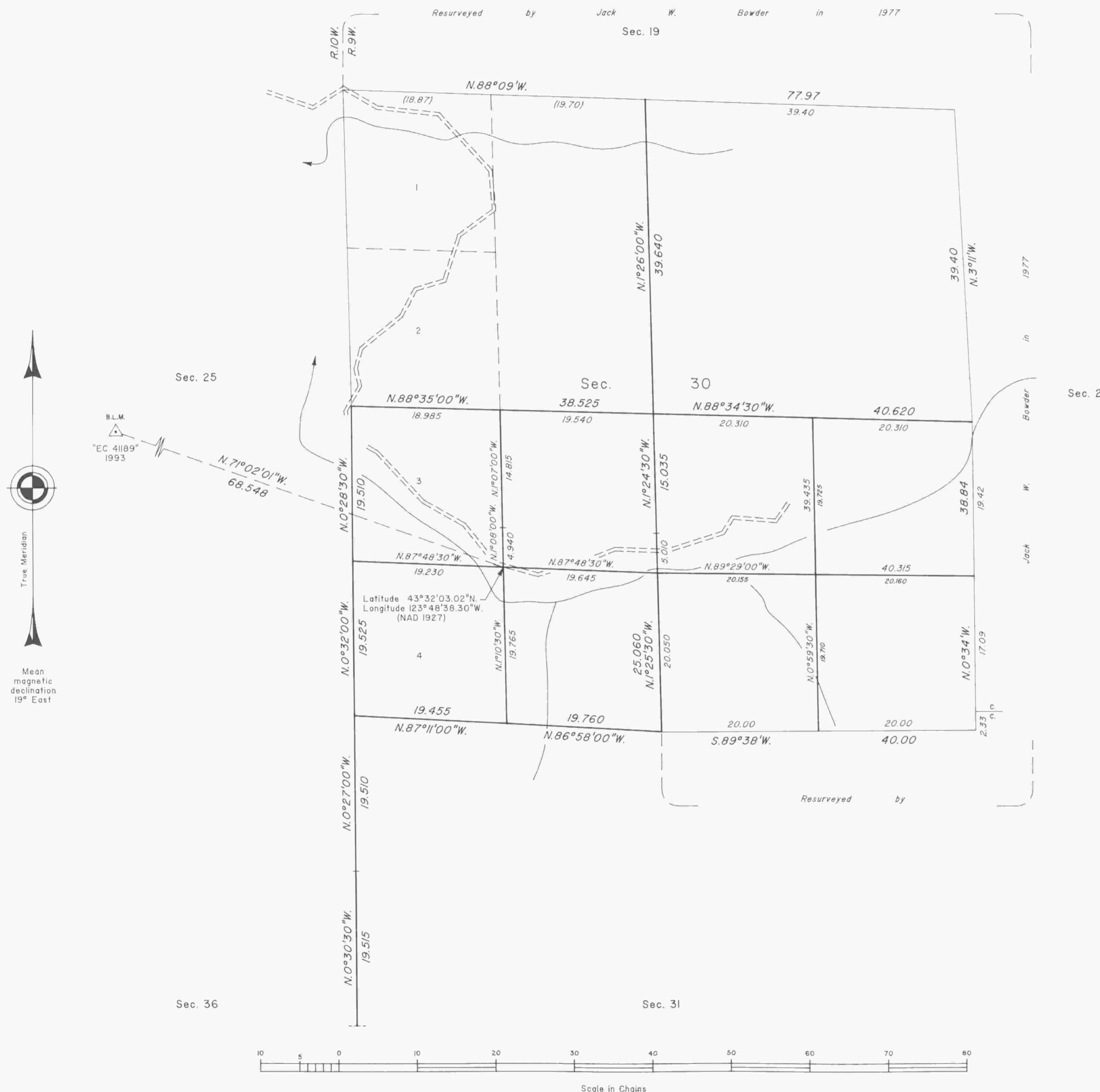


TOWNSHIP 23 SOUTH, RANGE 9 WEST, OF THE WILLAMETTE MERIDIAN, OREGON

DEPENDENT RESURVEY AND SUBDIVISION OF SECTION 30



A history of surveys is contained in the field notes.

This plat represents a dependent resurvey of a portion of the west boundary and subdivisional lines, T. 23 S., R. 9 W., Willamette Meridian, Oregon, designed to restore the corners in their true original locations according to the best available evidence, and the subdivision of section 30.

The lottings and areas are as shown on the plat approved July 26, 1879.

The survey was executed by Boyd W. Peterson, Cadastral Surveyor, and Richard L. Sanford, Surveying Technician, beginning August 16, 1993, and completed February 7, 1995, pursuant to Special Instructions dated July 6, 1993, under Group Number 1709, Oregon.

Timber in this area consists of fir, hemlock, alder, cedar, madrone, chinquapin, myrtle, and dogwood.

The tie to the geodetic control station is reported as mean bearing and sea level distance.

UNITED STATES DEPARTMENT OF THE INTERIOR
BUREAU OF LAND MANAGEMENT

Portland, Oregon January 24, 1997

This plat is strictly conformable to the approved field notes, and the survey, having been correctly executed in accordance with the requirements of law and the regulations of this Bureau, is hereby accepted.

For the Director

Wayne M. Gardner
Chief Cadastral Surveyor of Oregon