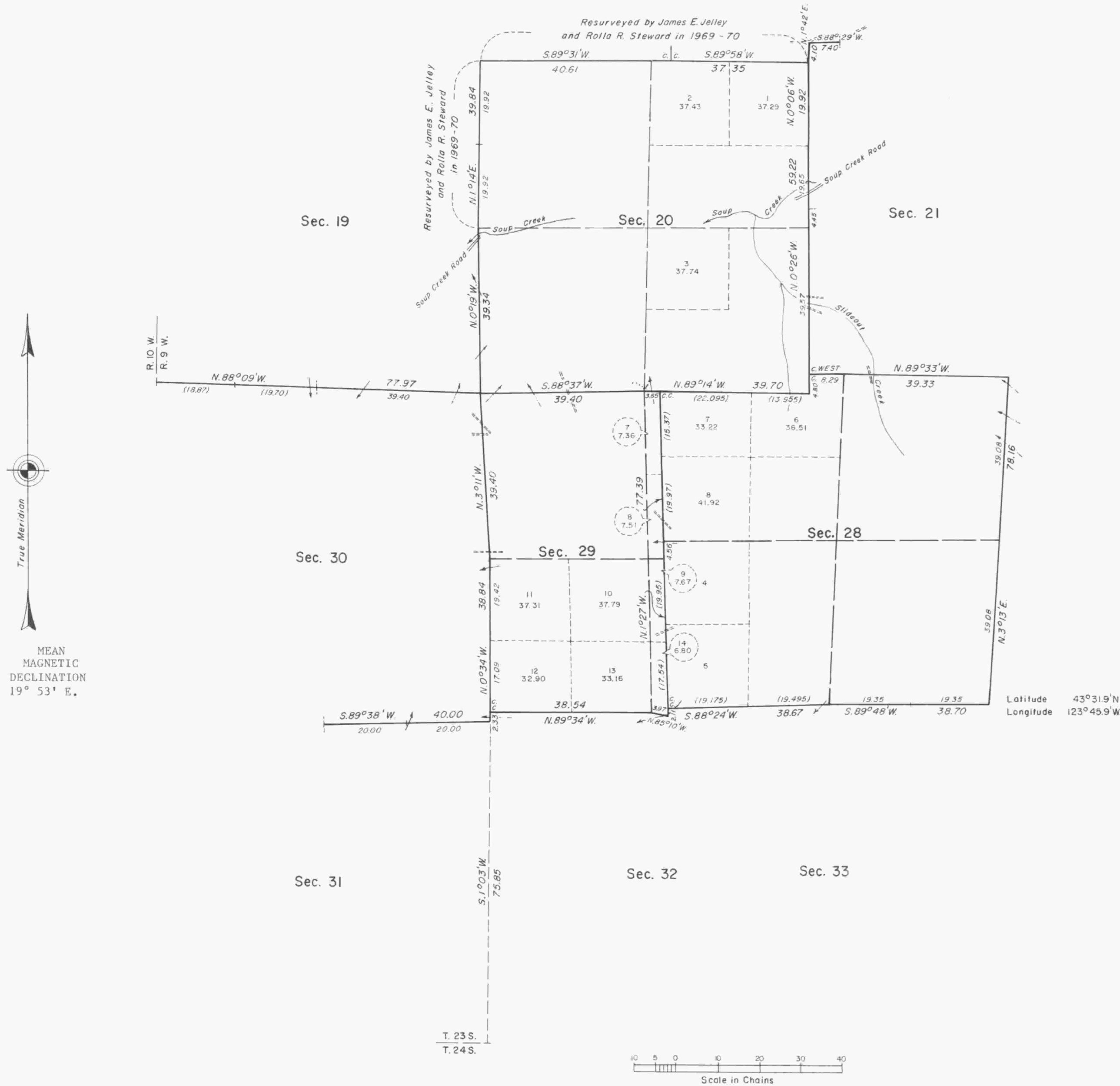


TOWNSHIP 23 SOUTH, RANGE 9 WEST, OF THE WILLAMETTE MERIDIAN, OREGON.

DEPENDENT RESURVEY



This plat represents a dependent resurvey of a portion of the subdivisional lines, designed to restore the corners in their true original locations according to the best available evidence, T. 23 S., R. 9 W., Willamette Meridian, Oregon.

Except as indicated hereon, the lottings and areas are as shown on the plats approved July 26, 1879 and June 12, 1900.

The south and west boundaries and a portion of the subdivisional lines were surveyed by William H. Byars, in 1878-79.

A portion of the north, south, east and west boundaries were retraced, and the survey of the subdivisional lines was completed by Oscar F. Thiel, in 1898-99.

A portion of the west boundary was dependently resurveyed by Donald R. Beck, in 1967.

A portion of the subdivisional lines was dependently resurveyed by James E. Jelley and Rolla R. Steward, in 1969-70.

Survey executed by Jack W. Bowder, Cadastral Surveyor, beginning August 8, 1977, and completed November 16, 1977, pursuant to Special Instructions dated February 11, 1977, for Group No. 927, Oregon.

UNITED STATES DEPARTMENT OF THE INTERIOR
BUREAU OF LAND MANAGEMENT
Denver, Colorado June 19, 1980

This plat is strictly conformable to the approved field notes, and the survey, having been correctly executed in accordance with the requirements of law and the regulations of this Bureau, is hereby accepted.

For the Director

Mary S. Spright

Acting Chief, Cadastral Survey
Examination and Approval Staff

Timber in this area consists of fir, hemlock, cedar, alder, maple, chinquapin and yew.

GEE