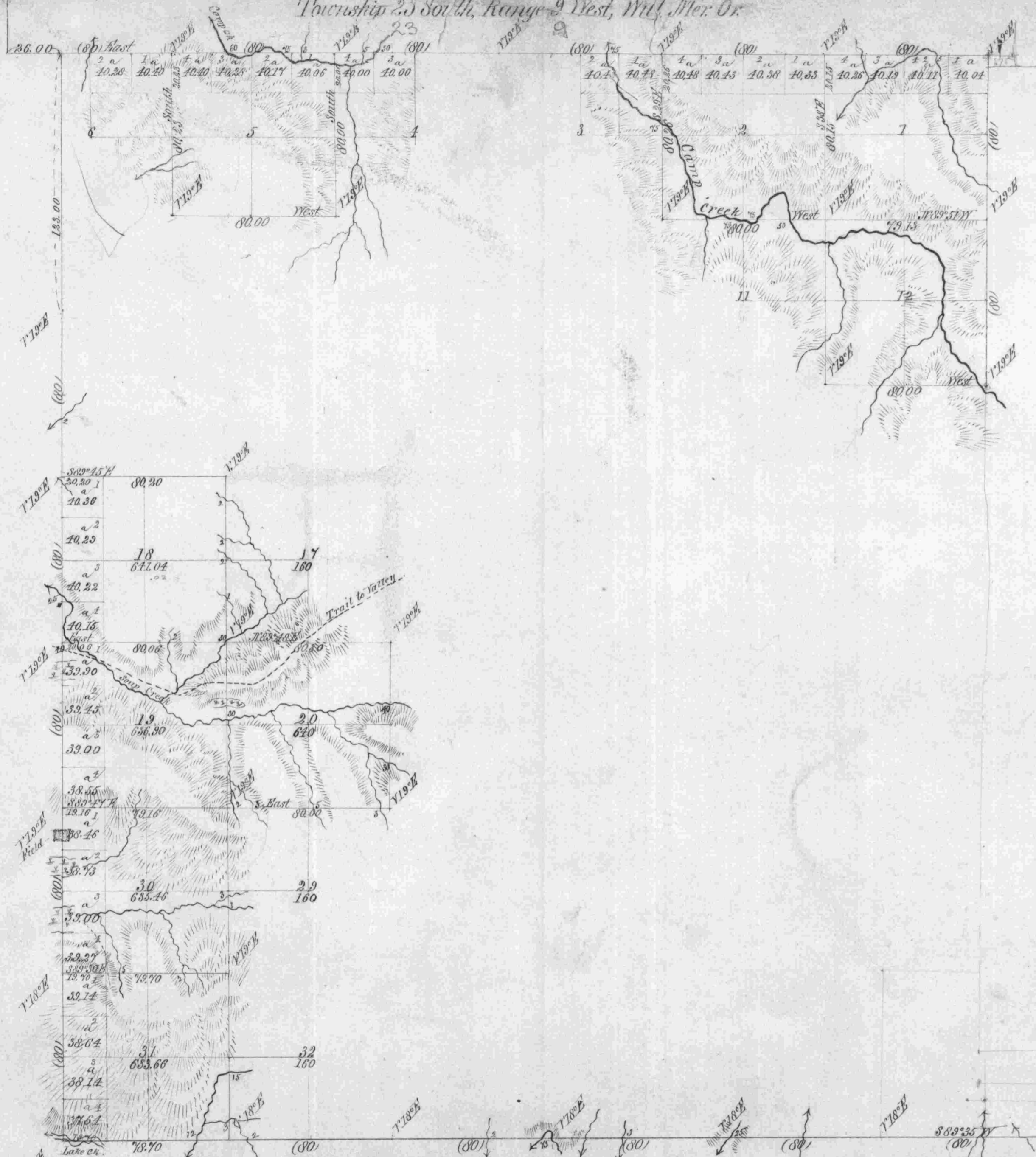
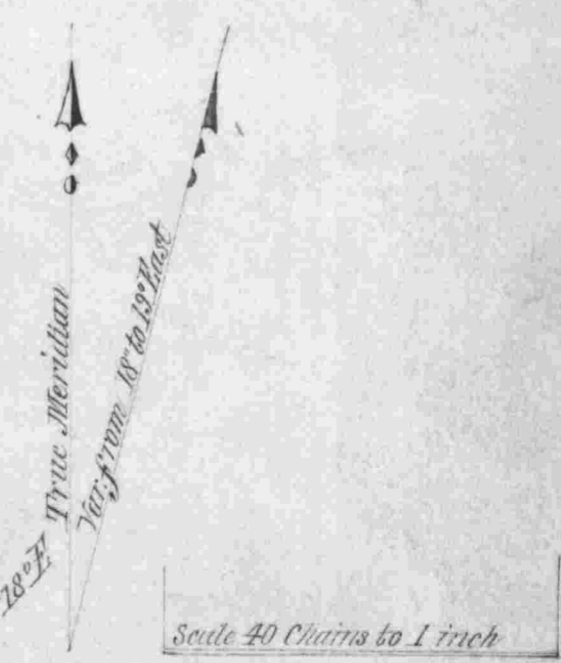


Township 23 South, Range 9 West, Will. Mer. Or.



General Description
 The surveys made in this Township include all the lands capable of being generally high rugged mountains. The valley along the streams are 1st quality of lands generally covered with Maple, Ash and Salmonberry bushes. The Mountains are covered with Cedar, Fir, Hemlock and Maple and a few other varieties. Underbrush some and Salmonberry, Salsal, service and some other bushes.

Total Acres 3667.06 A. S.



Lines	Contractor	No	Contract Date	Amount surveyed Miles Chains Links	Commenced	Completed
Subdivisions	W. H. Byars	332	Aug 7 1878	10 73 22	May 10 1879	May 15 1879
Exterior	W. H. Byars	292	" "			

The above copy of the subdivisional lines of Town. S. 23 S. R. 9 W. Will. Mer. Oregon is strictly conformable to the original field notes of the survey thereof on file in this Office which have been examined and approved.

U. S. Surveyor General's Office
 Portland, Oregon
 July 26 1879

James C. Tolman
 Sur. Gen. of Oregon