

Date: 3/14/2017 By: JC  
 This survey consists of:  
 Map: T23-8W 2017-1  
 Narrative: VOL 58 PAGES  
 Corner Rpt: 23397-23421

# TOWNSHIP 23 SOUTH, RANGE 8 WEST, OF THE WILLAMETTE MERIDIAN, OREGON

## DEPENDENT RESURVEY AND SUBDIVISION OF SECTION 23

DOUGLAS COUNTY  
 SURVEYOR

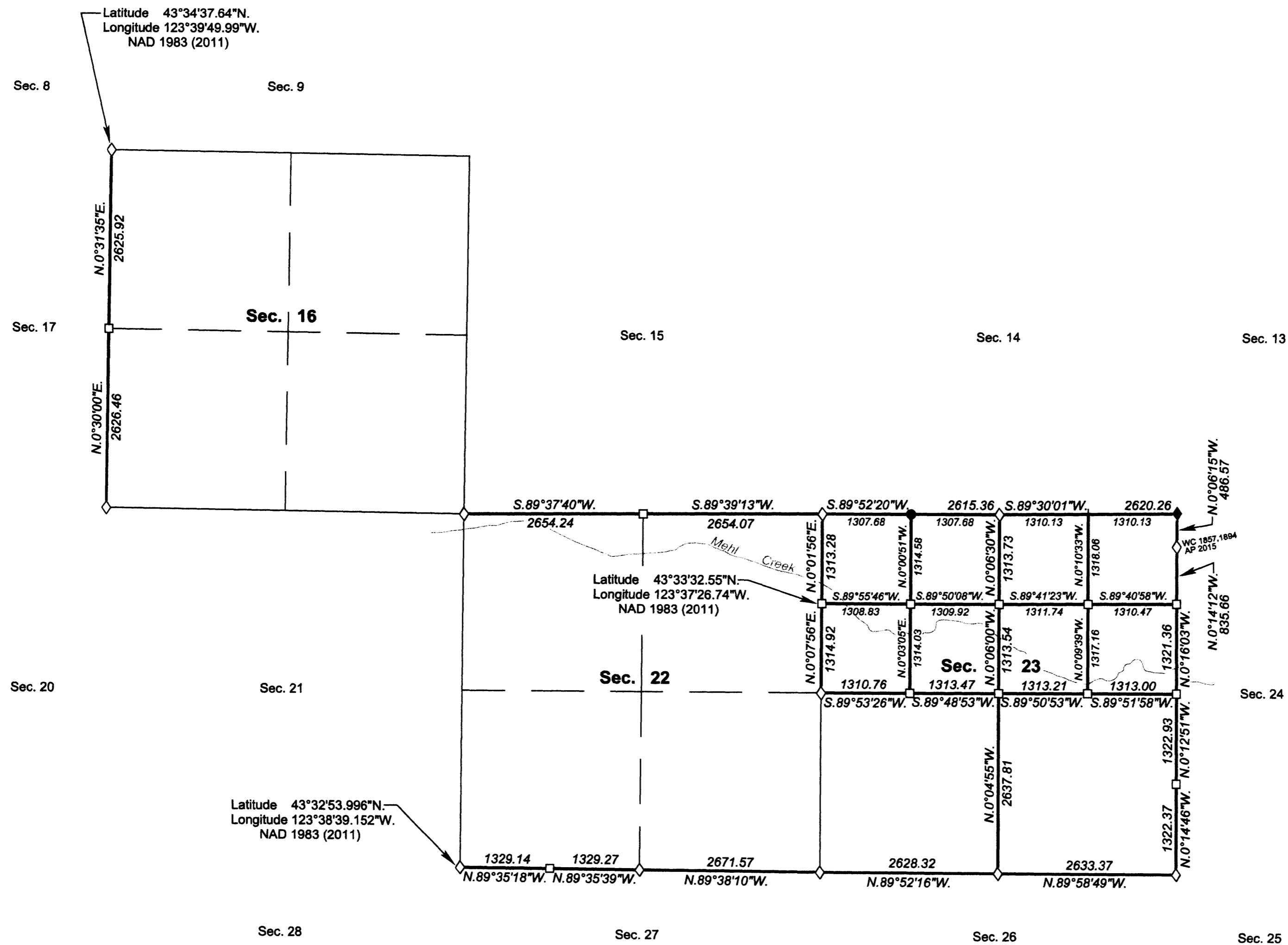
A history of surveys, corner descriptions, and other relevant information are contained in the field notes.

This plat represents the dependent resurvey of a portion of the subdivisional lines, designed to restore the corners in their true original locations according to the best available evidence, and the subdivision of section 23, Township 23 South, Range 8 West, Willamette Meridian, Oregon.

Official areas based on the measurements of this survey have been returned for Federal interest land where indicated. Aliquot part legal subdivisions retain their aliquot characteristics and refer to precisely the same land as that which was previously identified by its original survey or description. Except as indicated hereon, the lottings and areas are as shown on the plat approved June 27, 1895, and accepted January 15, 1897.

Survey executed by Edith M. Forkner, Cadastral Surveyor, beginning May 13, 2015, and completed August 5, 2015, pursuant to special instructions approved May 5, 2015, for Group No. 2781, Oregon.

OFFICIALLY FILED: 2/10/2017



**LEGEND**

- ◇ Original corner previously remonumented
- ◆ Original corner remonumented this survey
- Corner previously established or reestablished
- Corner established or reestablished this survey
- + Corner point calculated, no monument set

LEGAL SUBDIVISION	OFFICIAL ACRES
<b>SECTION 23</b>	
NE1/4 NE1/4	39.70
NW1/4 NE1/4	39.60
NE1/4 NW1/4	39.48
NW1/4 NW1/4	39.46
SE1/4 NW1/4	39.56
NE1/4 SE1/4	39.87
NW1/4 SE1/4	39.82
SW1/4 SE1/4	39.87
SE1/4 SE1/4	39.91
<b>TOTAL AREA</b>	<b>357.27</b>
<b>FEDERAL INTEREST LAND RESURVEYED IN SECTION 23</b>	

UNITED STATES DEPARTMENT OF THE INTERIOR  
 BUREAU OF LAND MANAGEMENT

Portland, Oregon

This plat is strictly conformable to the approved field notes, and the survey, having been correctly executed in accordance with the requirements of law and the regulations of this Bureau, is hereby accepted.

For the Director  
*Mary J. M. Hault*  
 Chief Cadastral Surveyor of Oregon

*December 12, 2016*  
 Date