

TOWNSHIP 23 SOUTH, RANGE 8 WEST, OF THE WILLAMETTE MERIDIAN, OREGON

DEPENDENT RESURVEY

DOUGLAS COUNTY
SURVEYOR

This plat represents the entire record of the dependent resurvey of a portion of the subdivisional lines, T. 23 S., R. 8 W., Willamette Meridian, Oregon, designed to restore the corners in their true original locations according to the best available evidence.

A history of surveys pertaining to this resurvey is as follows:

In 1855, Harvey Gordon and Charles T. Gardner, U.S. Deputy Surveyors, surveyed a portion of the south boundary, (Fifth Standard Parallel South), of T. 22 S., R. 8 W., as shown on the official plat of survey of T. 22 S., R. 8 W., approved February 20, 1856.

In 1881, William H. Byars, U.S. Deputy surveyor, surveyed a portion of the south boundary, (Fifth Standard Parallel South), of T. 22 S., R. 8 W., as shown on the official plat of survey of T. 22 S., R. 8 W., approved August 11, 1881.

In 1894, Williams R. Whipple, U.S. Deputy surveyor, surveyed a portion of the north boundary, (Fifth Standard Parallel South), and subdivisional lines, as shown on the official plat of survey approved June 27, 1895.

In 1962, Floyd A. Brooks, Cadastral Surveyor, resurveyed a portion of the south boundary, (Fifth Standard Parallel South), of T. 22 S., R. 8 W., as shown on the official plat of survey of T. 22 S., R. 8 W., accepted September 24, 1963.

In 1963-65, Floyd A. Brooks and James E. Jelley, Cadastral Surveyors, resurveyed a portion of the south boundary, (Fifth Standard Parallel South), of T. 22 S., R. 8 W., as shown on the official plat of survey of T. 22 S., R. 8 W., accepted March 24, 1966.

This survey was executed by Michael O. Jones, Cadastral Surveyor, beginning June 3, 2009, and completed July 22, 2009, in accordance with the specifications set forth in the Manual of Surveying Instructions, 1973; pursuant to Special Instructions dated May 27, 2009, approved May 28, 2009, under Group Number 2277, Oregon, and Assignment Instructions dated May 28, 2009. He was assisted by Keith G. Felker, Surveying Technician, Joseph M. Mannix, Land Surveyor Trainee, and Tom W. McNamara, Survey Aid.

Preliminary to the survey, the lines of the prior surveys were retraced and a search was made for all corners and other calls of record. The retracement data were thoroughly verified and only the true line data is given hereon. The directions of the lines refer to the true meridian as determined by Global Positioning System (GPS) measurements and by direct solar observations.

An analysis of the unadjusted field data assured a closure not exceeding 1:4000 in error. Measured distances and directions have been adjusted by computer software that incorporates a least squares adjustment routine. The adjusted bearings and distances are reported to the nearest second and 0.01 foot.

The lottings and areas are as shown on the plat approved June 27, 1895

Each new bearing trees have a 2 1/2 inch x 1/4 inch magnetic nail (Mag Nail) driven at the base on right side center, unless otherwise noted in the corner description.

The geodetic position shown hereon were determined by a tie from a temporary GPS control points, established utilizing dual frequency, carrier phase GPS receivers, and processed using the National Geodetic Survey's Online Positioning User Service (OPUS).

UNITED STATES DEPARTMENT OF THE INTERIOR
BUREAU OF LAND MANAGEMENT

Portland, Oregon

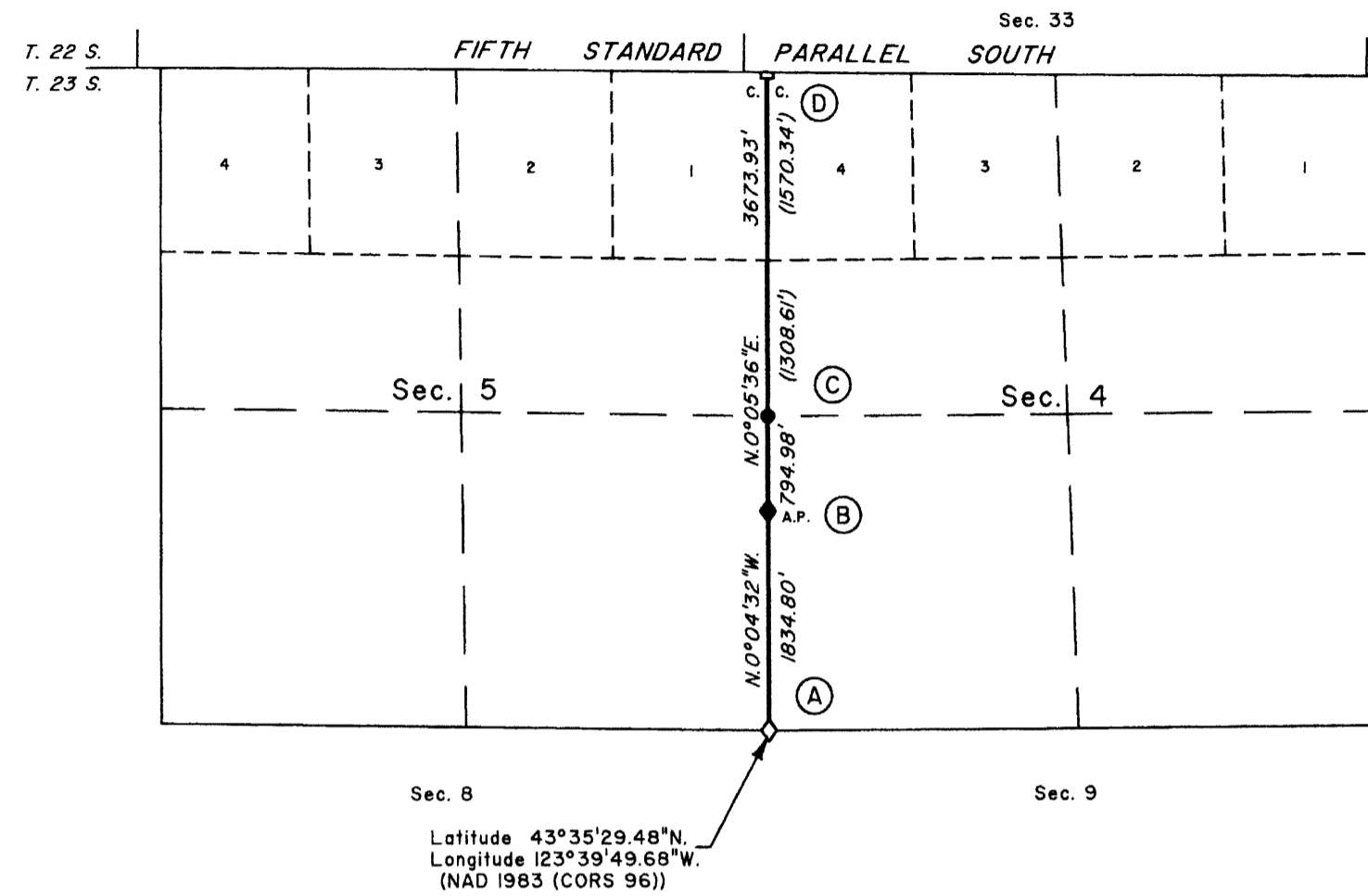
This plat, which constitutes the entire record of this survey, having been correctly executed in accordance with the requirements of law and the regulations of this Bureau, is hereby accepted.

For the Director

John P. Farnsworth, Acting

Chief Cadastral Surveyor of Oregon

January 25, 2011
Date



Latitude 43°35'29.48"N.
Longitude 123°39'49.68"W.
(NAD 1983 (CORS 96))

LEGEND

- ◇ Original corner previously remonumented
- ◆ Original corner remonumented this survey
- Corner previously reestablished
- Corner reestablished this survey

(A) The cor. of secs. 4, 5, 8, and 9, perpetuated by Vernon Tracy, Douglas County Surveyor, in 1966, filed in the Douglas County Surveyor's Office under C.S. file No. 54/12, rehabilitated by L. Monrean, Deputy County Surveyor, in 1979, filed in the Douglas County Surveyor's Office under C.S. file No. 59/30, remonumented by Gregory Quibell, Deputy County Surveyor, in 1981, filed in the Douglas County Surveyor's Office under C.S. file No. 61/29, and rehabilitated by Ronald L. Rice, Professional Land Surveyor No. 54633, in 2008, filed in the Douglas County Surveyor's Office under C.S. file No. 65/63-26; monumented with an iron pipe, 1 1/2 ins. diam., firmly set, in a mound of stone, 3 ft. base, 12 ins. high, with a brass cap mkd.

DOUGLAS CO. SURVEYOR
T 23 S
S 5 | S 4
S 8 | S 9
R 8 W
1981

from which an original bearing tree

A fir, 44 ins. diam., bears N. 67° W., 25.1 ft. dist., with a healed blaze.

and a bearing tree mkd. by Tracy, Douglas County Surveyor

A fir, 24 ins. diam., bears S. 18° E., 15.4 ft. dist., with a healed blaze.

and a bearing tree mkd. by Monrean, Deputy County Surveyor

A fir, 15 ins. diam., bears S. 34° W., 62.0 ft. dist., with a healed blaze.

and a bearing tree mkd. by Rice, PLS No. 54633

A fir, 20 ins. diam., bears N. 38° E., 26.9 ft. dist., with illegible scribe marks visible on partially healed blaze.

A steel fence post is alongside the cor.

(B) The remains of an original line tree on the line between secs. 4 and 5; monumented with a sawed fir stump, 74 ins. dia. 6 ft. high, mkd. with 2 notches on the N. side and 2 rotten notches on the S. side, and red paint under the moss on the stump, and is accepted as an angle point on the line bet. secs. 4 and 5.

At the corner point

Drive an aluminum rod, 36 ins. long, 1/2 in. diam., 36 ins. in the center of the stump, with aluminum cap mkd.

AP
S 5 | S 4
2009

from which

A fir, 7 ins. diam., bears N. 87° E., 20.6 ft. dist., mkd. AP S4 BT.

A maple, 11 ins. diam., bears S. 69° W., 13.6 ft. dist., mkd. AP S5 BT.

(C) Point for the 1/4 sec. cor. of secs. 4 and 5, at proportionate distance between the original line tree bet. secs. 4 and 5 and the closing cor. of secs. 4 and 5 on the N. bdy. of the Tp.; there is no remaining evidence of the original corner.

Set a stainless steel post, 28 ins. long, 2 1/2 ins. diam., 22 ins. in the ground, with brass cap mkd.

T 23 S R 8 W
1/4
S 5 | S 4
2009

from which

A fir, 9 ins. diam., bears S. 27° E., 18.8 ft. dist., mkd. 1/4 S4 BT.

A fir, 14 ins. diam., bears N. 63° W., 18.1 ft. dist., mkd. 1/4 S5 BT.

Deposit a magnet in a white plastic case at the base of the stainless steel post.

(D) The closing cor. of secs. 4 and 5 on the N. bdy. of the Tp., (Fifth Standard Parallel South), reestablished by Brooks in 1962; monumented with an iron post, 2 1/2 ins. diam., firmly set, projecting 5 ins. above the ground, with a brass cap mkd.

T 22 S
S 33
S 5 | S 4
C C
T 23 S R 8 W
1962

from which new bearing trees

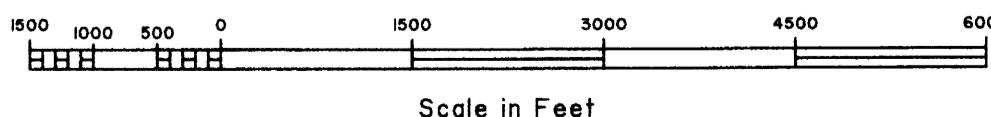
A fir, 11 ins. diam., bears S. 50° E., 18.4 ft. dist., mkd. T23S R8W S4 CC BT.

A fir, 8 ins. diam., bears S. 43° W., 10.3 ft. dist., mkd. X BT.

I, Michael O. Jones, Cadastral Surveyor, HEREBY CERTIFY upon honor, that in pursuance of Special Instructions bearing date of the 27th day of May, 2009, I have dependently resurveyed a portion of the subdivisional lines, Township 23 South, Range 8 West, of the Willamette Meridian, in the State of Oregon. Said survey has been made in strict conformity with said Special Instructions, the Manual of Instructions for the Survey of the Public Lands of the United States, 1973, and in specific manner described on this plat.

Map
Cadastral Surveyor

1-18-2011
Date



Scale in Feet

OFFICIALLY FILED: 4/18/2011