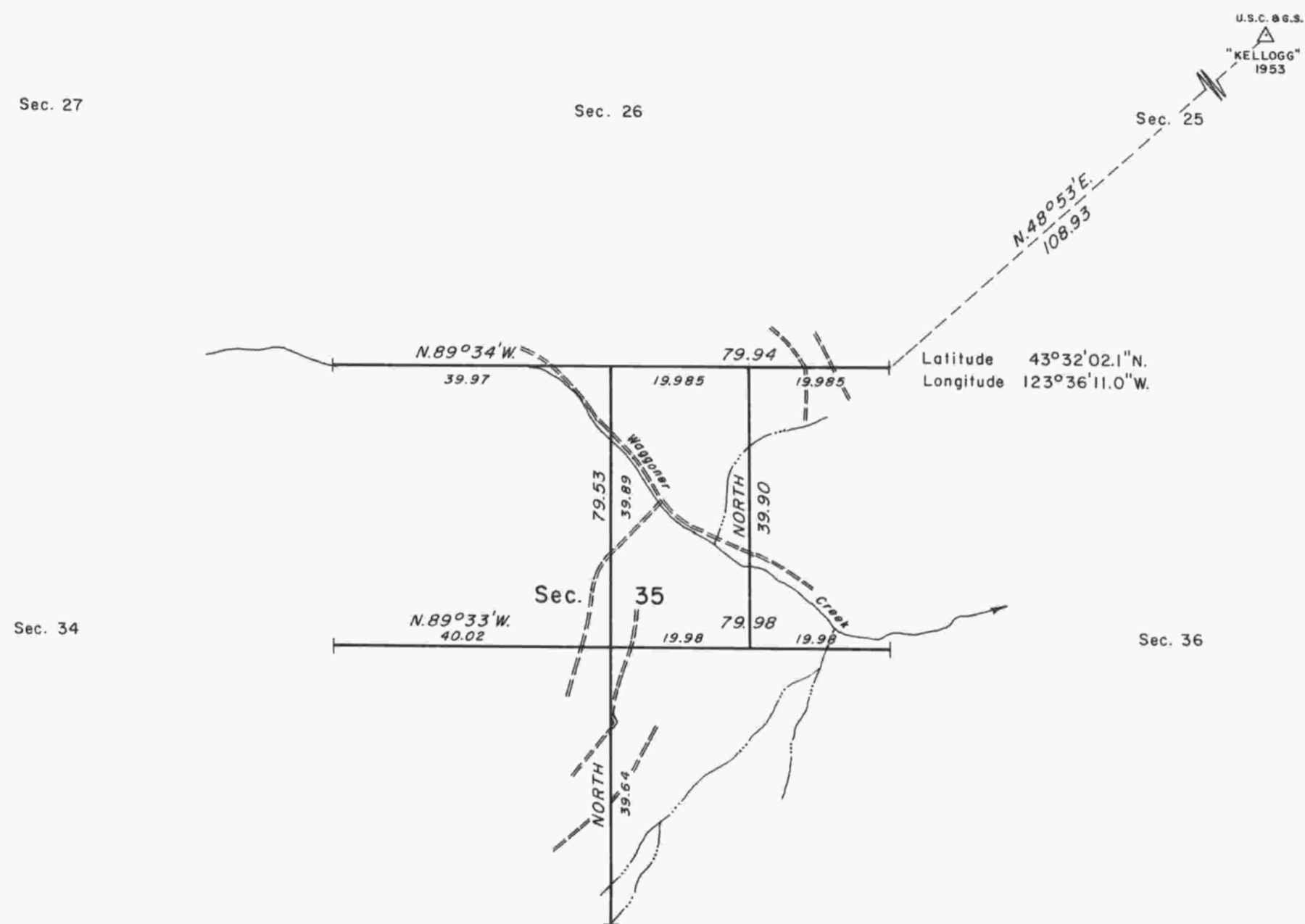


TOWNSHIP 23 SOUTH, RANGE 8 WEST, OF THE WILLAMETTE MERIDIAN, OREGON.

DEPENDENT RESURVEY, AND SUBDIVISION OF SECTION 35



The history of surveys is contained in the field notes.

This plat represents a dependent resurvey of a portion of the subdivisional lines, T. 23 S., R. 8 W., Willamette Meridian, Oregon, designed to restore the corners in their true original locations according to the best available evidence, and the subdivision of section 35.

The lottings and areas are as shown on the plat approved June 27, 1895.

The survey was executed by Stephen J. Malloy, Cadastral Surveyor, beginning July 16, 1984, and completed August 1, 1984, pursuant to Special Instructions dated June 22, 1984, under Group Number 1219, Oregon.

Timber in this area consists of fir, cedar, hemlock, alder, and maple.

UNITED STATES DEPARTMENT OF THE INTERIOR
BUREAU OF LAND MANAGEMENT
Portland, Oregon June 19, 1987

This plat is strictly conformable to the approved field notes, and the survey, having been correctly executed in accordance with the requirements of law and the regulations of this Bureau, is hereby accepted.

For the Director

William W. Glenn
Chief Cadastral Surveyor of Oregon