

TOWNSHIP 23 SOUTH, RANGE 8 WEST, OF THE WILLAMETTE MERIDIAN, OREGON.

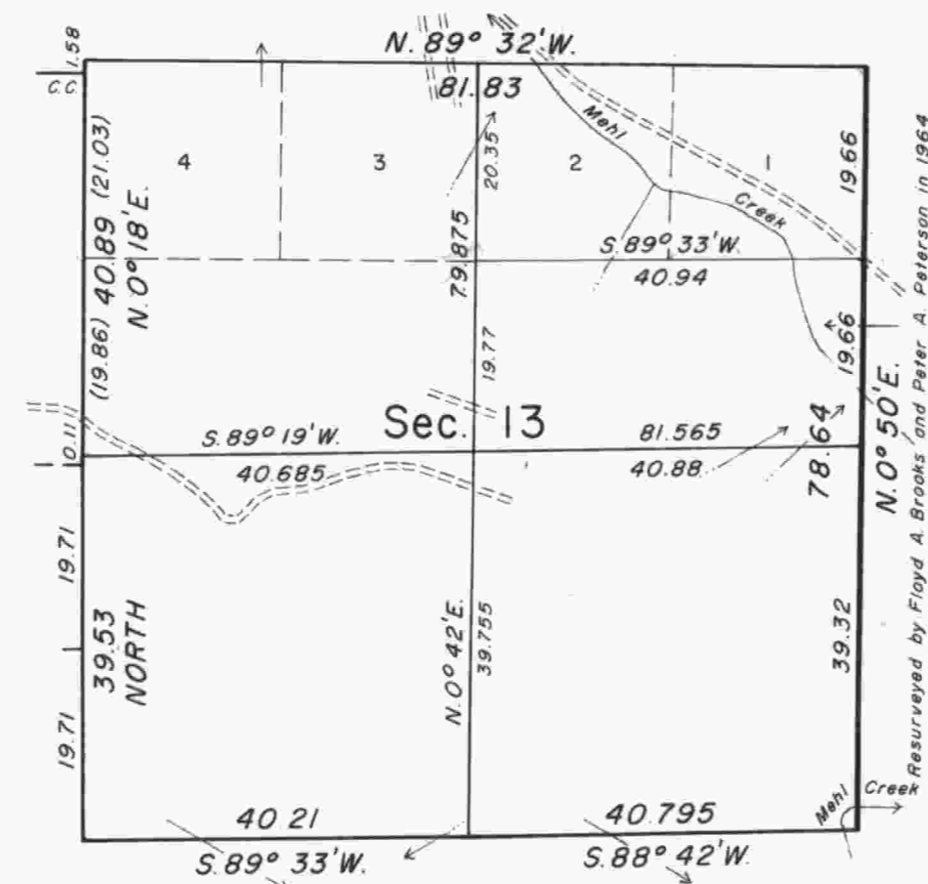
DEPENDENT RESURVEY AND SUBDIVISION OF SECTION 13 AND REMONUMENTATION

Sec. 6  Sec. 5

Sec. 11

Sec. 12

Sec. 14



Latitude 43° 33.8' N.
Longitude 123° 35.0' W.

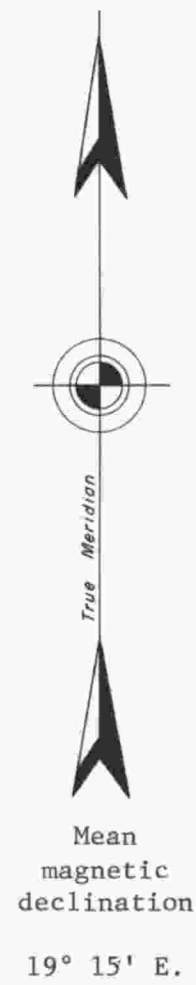
This plat represents a retracement and reestablishment of a portion of the subdivisional lines and remonumentation of an original corner point, T. 23 S., R. 8 W., Willamette Meridian, Oregon, designed to restore the corners in their true original location according to the best available evidence; and subdivision of Section 13.

The lottings and areas are as shown on the plat approved June 27, 1895.

The east boundary was surveyed by Ambrose N. Armstrong and Thomas H. Hutchinson in 1857. A portion of the subdivisional lines was surveyed by Dennis Hathorn in 1857. A portion of Hathorn's subdivisional lines was retraced and the survey of the subdivisional lines was completed by Williams R. Whipple in 1894. A portion of the east boundary and subdivisional lines were dependently resurveyed by Floyd A. Brooks and Peter A. Peterson in 1964. The boundary of Section 11, the north one-half mile of the west boundary of Section 13, and a portion of the Gottlieb Mehl Donation Land Claim No. 40, were dependently resurveyed by Peter A. Peterson in 1967-68.

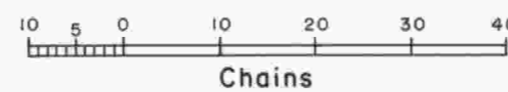
The resurvey, subdivision of Section 13, and remonumentation were executed by James E. Jelley, Cadastral Surveyor, from August 20 to September 23, 1970, under Special Instructions dated May 3, 1957 and July 24, 1970, which provide for the surveys included under Group Nos. 350 and 722, Oregon.

⊕ Remonumentation under Group No. 350 in 1970.



Sec. 23

Sec. 24



Area resurveyed: 644.68 acres

"Suspension Lifted, February 8, 1989, File 9600 (OR 942).
Refer to plat accepted September 30, 1988."

Timber in this area consists of fir, hemlock, cedar, oak, maple, yew, and chinquapin.

"Suspended, July 1, 1986, See File 9622.1(942)."

UNITED STATES DEPARTMENT OF THE INTERIOR
BUREAU OF LAND MANAGEMENT
Washington, D.C. April 19, 1972

This plat is strictly conformable to the approved field notes, and the survey, having been correctly executed in accordance with the requirements of law and the regulations of this Bureau, is hereby accepted.

For the Director

Chief, Division of Cadastral Survey

159