

# TOWNSHIP 23 SOUTH, RANGE 8 WEST, OF THE WILLAMETTE MERIDIAN, OREGON.

DEPENDENT RESURVEY AND REMONUMENTATION

This plat represents a retracement and reestablishment of a portion of the east boundary and subdivisional lines, and remonumentation of an original corner point, designed to restore the corners in their true original locations according to the best available evidence. The lottings and areas are as shown on the plat approved April 24, 1858.

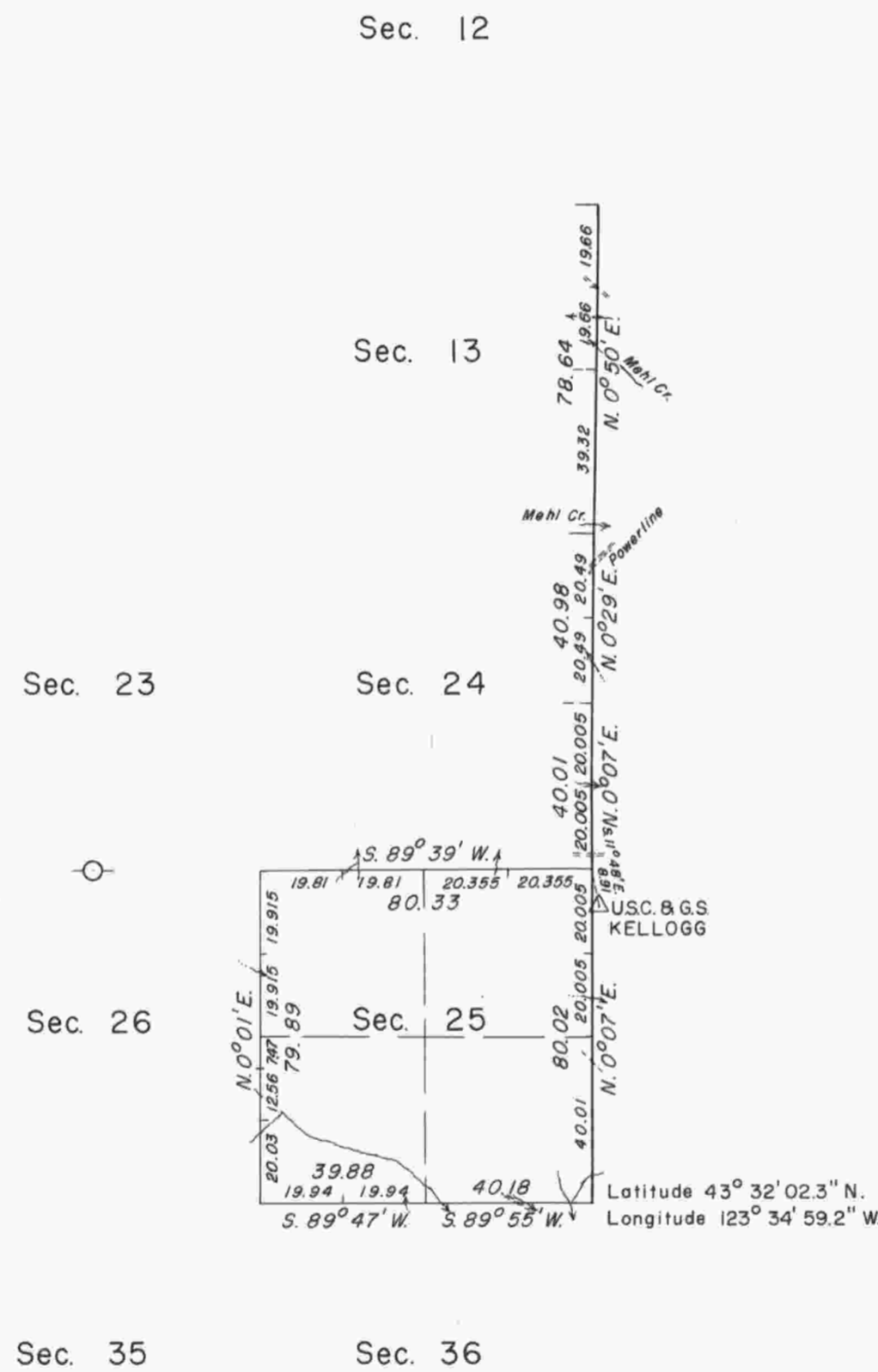
The east boundary of the township was surveyed by T.H. Hutchinson and A. N. Armstrong in 1857. A portion of the subdivisional lines, including section 25, were surveyed by Dennis Hathorn in 1857. The survey of the township was completed, and a portion of the subdivisional lines were retraced by W. R. Whipple in 1894.

These surveys executed by Floyd A. Brooks and Peter A. Peterson, April 3 to April 22, 1964, under Special Instructions dated February 12, 1964, and May 3, 1957, for Group Nos. 538 and 350, Oregon.

⊕ Corner remonumented under Group No. 350.



Mean  
Magnetic  
Declination  
19°56' East



UNITED STATES DEPARTMENT OF THE INTERIOR  
BUREAU OF LAND MANAGEMENT  
Washington, D. C. August 20, 1965

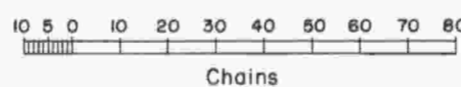
This plat is strictly conformable to the approved field notes, and the survey, having been correctly executed in accordance with the requirements of law and the regulations of this Bureau, is hereby accepted.

For the Director

*Clark F. Sumner*

Acting Chief, Division of Engineering

Timber in this area consists of fir, hemlock, cedar, maple, oak, madrone, alder, and willow.



Area resurveyed: 640.00 Acres

"Suspension Lifted, February 8, 1989, File 9600 (OR 942).  
Refer to plat accepted September 30, 1988."

"Suspended, July 1, 1986, See File 9622.1 (942)."