

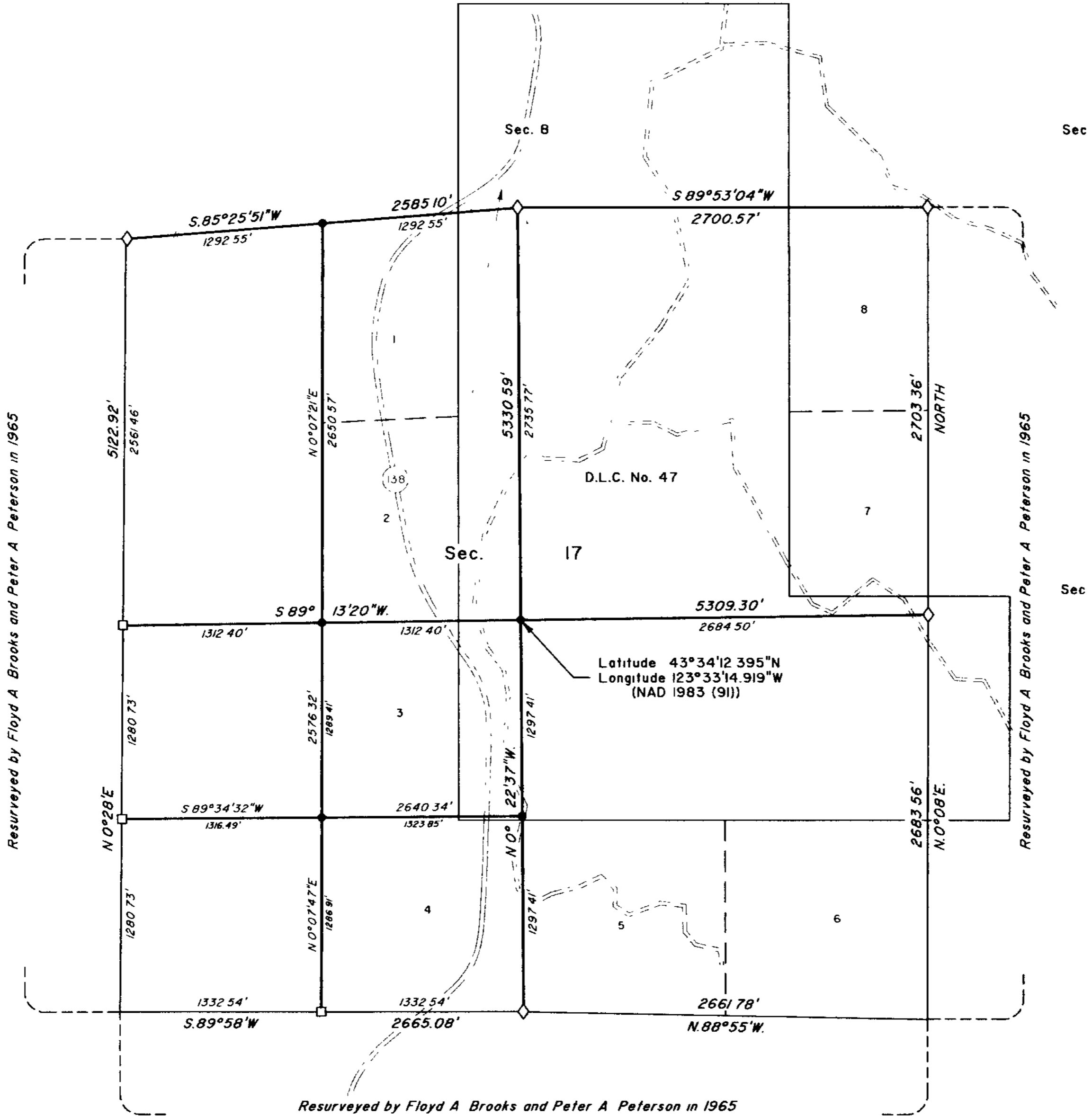
TOWNSHIP 23 SOUTH, RANGE 7 WEST, OF THE WILLAMETTE MERIDIAN, OREGON

CORRECTIVE DEPENDENT RESURVEY AND CORRECTIVE SURVEY

Sec 7

Sec. 8

Sec 9



A history of surveys is contained in the field notes.

This plat represents a corrective dependent resurvey of a portion of the subdivisional lines, and the corrective survey of the subdivision of section lines of section 17, T. 23 S., R. 7 W., Willamette Meridian, Oregon, designed to restore the corners in their true original locations according to the best available evidence

Measured distances and directions have been adjusted by Cadastral Measurement Management (CMM), computer software that incorporates a least squares adjustment routine. The adjusted bearings and distances are reported to the nearest second and 0.01 foot.

The lottings and areas are as shown on the plats approved December 13, 1858 and February 21, 1863.

The survey was executed by Craig L. Wanless, Cadastral Surveyor, beginning September 21, 2000, and completed November 2, 2000, pursuant to Special Instructions dated January 26, 2000, under Group Number 1936, Oregon.

Timber in this area consists of Douglas fir, hemlock, cedar, chinquapin, oak, alder, maple, myrtlewood and madrone

LEGEND

- ◇ Original corner previously remonumented
- Corner previously established or reestablished
- Corner established this survey

UNITED STATES DEPARTMENT OF THE INTERIOR
BUREAU OF LAND MANAGEMENT

Portland, Oregon

April 6, 2001

This plat is strictly conformable to the approved field notes, and the survey, having been correctly executed in accordance with the requirements of law and the regulations of this Bureau, is hereby accepted.

For the Director

Wayne D. Gardner
Chief Cadastral Surveyor of Oregon



Mean magnetic declination 18° East