

TOWNSHIP 23 SOUTH, RANGE 7 WEST, OF THE WILLAMETTE MERIDIAN, OREGON.

DEPENDENT RESURVEY AND SUBDIVISION OF SECTION

*VOID - SEE
2000 Resurvey*

Sec. 7

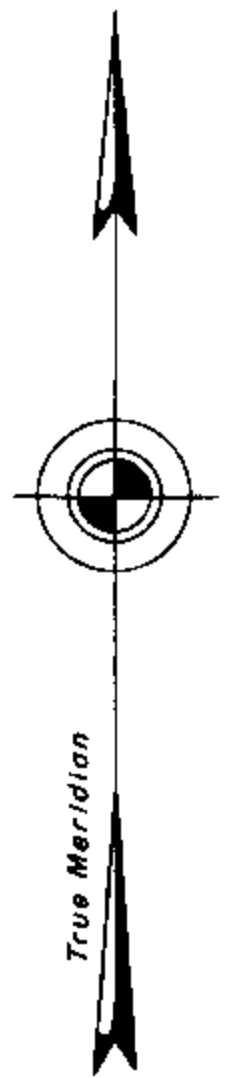
Sec. 8

Sec. 9

This plat represents a retracement and reestablishment of a portion of the subdivisional lines, designed to restore the corners in their true original locations according to the best available evidence, and, the survey of the subdivision of section 17. The lottings and areas are as shown on the plats approved December 13, 1858, and February 21, 1863.

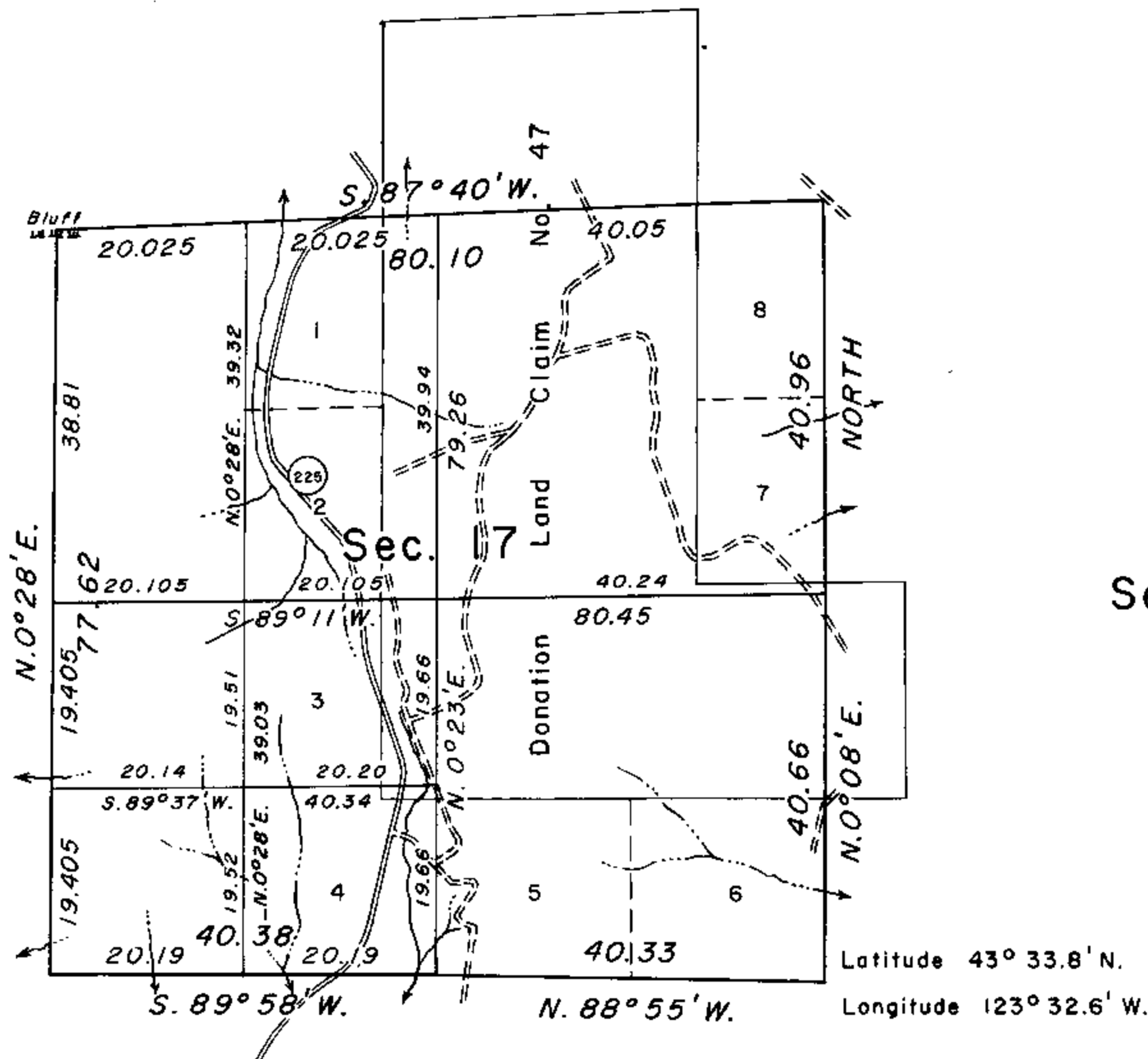
The west four ranges of sections were surveyed by Ambrose N. Armstrong and Thomas A. Hutchinson in 1858. The corner of sections 16, 17, 20, and 21, was remonumented by Thomas A. Tillman in 1958.

Survey executed by Floyd A. Brooks and Peter A. Peterson, August 30 to September 16, 1965, under Special Instructions dated August 3, 1965, which provide for the surveys included under Group No. 594, Oregon.



Mean
Magnetic
Declination
20°11' East

Sec. 18



Sec. 16

Sec. 19

Sec. 20

Sec. 21

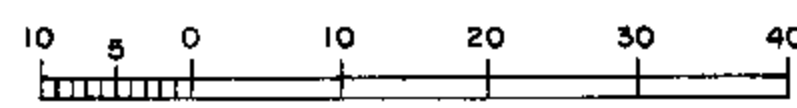
UNITED STATES DEPARTMENT OF THE INTERIOR
BUREAU OF LAND MANAGEMENT
Washington, D. C. January 24, 1967

This plat is strictly conformable to the approved field notes, and the survey, having been correctly executed in accordance with the requirements of law and the regulations of this Bureau, is hereby accepted.

For the Director

R. E. Brown

Acting Chief, Division of Engineering



Chains

Area resurveyed: 640 Acres

Timber in this area consists of fir, hemlock, cedar, maple, alder, myrtle, chinquapin, oak, and madrone.

"Suspended Jan. 19, 2000, see file 9632 (OR957)"
"Suspension lifted Oct. 28, 2002 File 9632 (OR957)"
Refer to plat accepted April 6, 2001"