

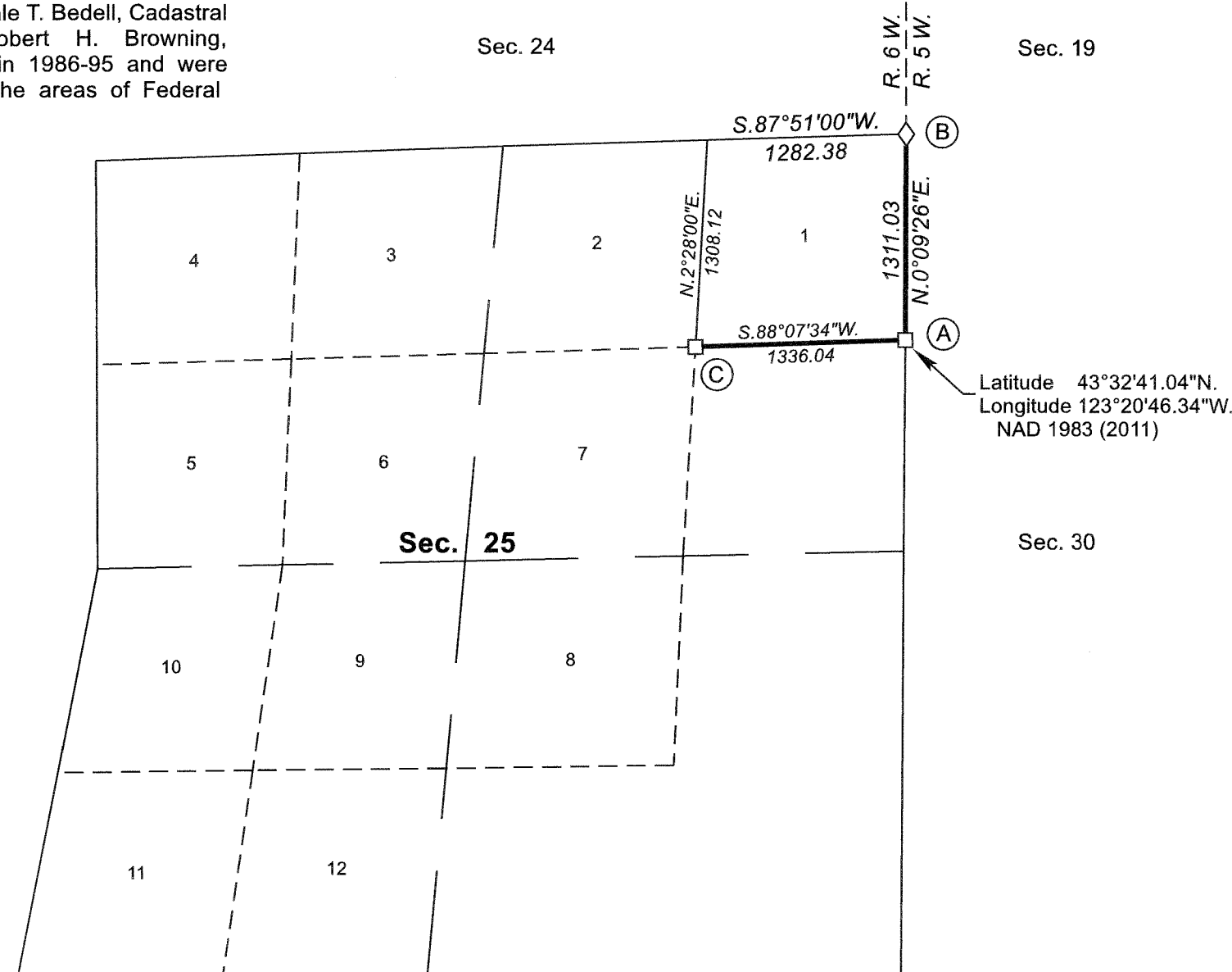
Date: 9/20/2022 By: JC
This survey consists of:
Map: PLAT: T23-6 2022-1
VOL. 59 PGS 24036
Corner Rpt. NO SEPARATE LINES NOTES
ALL INFORMATION IS ON THE PLAT

TOWNSHIP 23 SOUTH, RANGE 6 WEST, OF THE WILLAMETTE MERIDIAN, OREGON

DEPENDENT RESURVEY

NOTE:

The lightweight lines with bearings and distances shown in section 25 were surveyed by Wayne L. Rogers, Boyd W. Peterson, Philip G. Griffin, and Dale T. Bedell, Cadastral Surveyors, and Robert H. Browning, Surveying Technician in 1986-95 and were utilized to calculate the areas of Federal interest land.



The history of official surveys pertaining to this survey is as follows:

In 1853, Robert Elder and Henry S. Gile, U.S. Deputy Surveyors, surveyed the east boundary of the township, as shown on the official plat of survey for T. 23 S., R. 5 W., approved June 30, 1853.

In 1878, William Thiel, U.S. Deputy Surveyor, surveyed a portion of the subdivisional lines as shown on the official plat of survey approved April 2, 1879.

In 1883, John A. McQuinn, U.S. Deputy Surveyor, the remainder of the subdivisional lines as shown on the official plat of survey approved April 7, 1884, and accepted May 8, 1884.

In 1943-57, Otis O. Gould, Cadastral Engineer, and Joseph S. Gawron and Orville N. Eggen, Cadastral Surveyors, dependently resurveyed the east boundary and subdivisional lines, as shown on the official plat of survey accepted August 24, 1960, suspended September 22, 1983, suspension lifted November 23, 1998.

In 1986-95, Wayne L. Rogers, Boyd W. Peterson, Philip G. Griffin, and Dale T. Bedell, Cadastral Surveyors; and Robert H. Browning, Surveying Technician, correctively resurveyed portions of the east boundary, subdivisional lines, and subdivision of section 26; and subdivided section 25, as shown on the official plat of survey accepted October 17, 1995.

In 2010, A. Bert Skeesick, Cadastral Surveyor, recovered the corner of sections 19, 24, 25, and 30 on the east boundary of the township, as shown on the official plat of survey for T 23 S., R. 5 W. accepted November 16, 2011.

This plat constitutes the entire record of the dependent resurvey of portions of the east boundary and subdivision of section lines of section 25, designed to restore the corners in their true original locations according to the best available evidence, Township 23 South, Range 6 West, Willamette Meridian, Oregon

The directions of the lines are based on the true meridian as determined by Global Positioning Systems (GPS) techniques and carried forward by sustained angulation using conventional survey techniques. All measurements along the lines were derived through the use of GPS and conventional survey techniques. Measured distances and directions have been adjusted by computer software that incorporates a least squares adjustment routine. The adjusted mean bearings and mean horizontal ground elevation distances are reported to the nearest second and 0.01 foot.

Official areas based on the measurements of this survey have been returned for Federal interest land where indicated. Aliquot part legal subdivisions retain their aliquot characteristics and refer to precisely the same land as that which was previously identified by its original survey or description. A lot can only be subdivided by survey or supplemental plat. Except as indicated hereon, the lottings and areas are as shown on the plat approved April 2, 1879, and plats accepted August 24, 1960, and October 17, 1995.

Preliminary to the resurvey, the lines of the official original surveys and resurveys were retraced and a search was made for all corners, lines, other calls of record, and where available, collateral evidence of local surveys and corners. Identified corners were perpetuated in their original positions. The retracement data was thoroughly verified and only the true line field data are given hereon.

A magnet in a white plastic case was deposited at the base of each stainless steel post, and each new bearing tree has a 2 1/2 inch x 1/4 inch magnetic nail (Mag Nail) driven at the base on the right side center, unless otherwise noted in the corner description. Only those lines bounding Federal interest land were blazed.

The geographic position shown hereon was determined by tie from temporary GPS control points, utilizing dual frequency, carrier phase GPS receivers, and processed using the National Geodetic Survey's Online Positioning User Service (OPUS).

The survey was executed in accordance with the specifications set forth in the Manual of Surveying Instructions (2009), and the special instructions approved October 7, 2019, for Group No. 2961, Oregon, by Jeffrey O. Covington, Cadastral Surveyor, beginning October 17, 2019, and completed January 7, 2020. He was assisted by Robert NMI Durning and Jesse S. Smith, Surveying Technicians.

UNITED STATES DEPARTMENT OF THE INTERIOR
BUREAU OF LAND MANAGEMENT

Portland, Oregon

The survey represented by this plat, having been correctly executed in accordance with the requirements of law and the regulations of this Bureau, is hereby accepted.

For the Director

Mary J. M. Hault
Chief Cadastral Surveyor of Oregon

April 26, 2022
Date

(A) The N 1/16 sec. cor. of secs. 25 and 30, reported by Rogers, Peterson, Griffin, Bedell, and Browning in 1986-95, monumented with a stainless steel post, 2 1/2 ins. diam., firmly set, with top 8 ins. below surface of road, with a brass cap mkd.

N 1/16
S 25 | S 30
1986

from which the bearing trees reported by Rogers, Peterson, Griffin, Bedell, and Browning

A fir, 25 ins. diam., bears S. 18° E., 194.0 ft. dist., with a healed double blaze. (Record, S. 16° E., 192.7 ft. dist.)

A fir, 33 ins. diam., bears N. 55 3/4° W., 95.0 ft. dist., with a healed blaze. (Record, N. 55° W.)

Corner is located in center of overgrown dirt road, 12 ft. wide, bears N. 50° W. and S. 30° E.

(B) The cor. of secs. 19, 24, 25, and 30, reported by Skeesick in 2010; perpetuated by person(s) unknown; monumented with an iron post, 2 ins. diam., firmly set, projecting 12 ins. above ground, with a brass cap mkd.

T 23 S
R 6 W | R 5 W
S 24 | S 19
S 25 | S 30
1943

from which the remains of the bearing trees reported by Skeesick

A fir, 11 ins. diam., bears N. 78 1/2° E., 25.1 ft. dist., with a healed blaze.

A roothole bears S. 51 1/2° E., 37.0 ft. dist., alongside of which is a down fir, 19 ins. diam., with a healed blaze.

A fir stump, 41 ins. diam., bears S. 28° E., 93.1 ft. dist., with no marks visible on open blaze. (Original)

A fir snag, 65 ins. diam., bears S. 65 1/2° W., 68.6 ft. dist., with a healed blaze. (Original)

A maple, 16 ins. diam., bears N. 44° W., 28.1 ft. dist., with scribe marks BT visible on partially healed blaze.

and a bearing tree mkd. by person(s) unknown

A fir, 34 ins. diam., bears S. 6° W., 7.0 ft. dist., with a healed blaze; and with scribe marks BT visible on bark.

and a new bearing tree

A maple, 8 ins. diam., bears S. 82 3/4° E., 43.2 ft. dist., mkd. T23S R5W S30 BT.

(C) The NE 1/16 sec. cor. of sec. 25, reported by Rogers, Peterson, Griffin, Bedell, and Browning in 1986-95, monumented with a stainless steel post, 2 1/2 ins. diam., firmly set, projecting 4 ins. above ground, with a brass cap mkd.

NE 1/16
S 25
1986

from which the remains of the bearing tree reported by Rogers, Peterson, Griffin, Bedell, and Browning

A cedar snag, 10 ins. diam., bears S. 23° W., 39.6 ft. dist., with a healed double blaze.

and new bearing trees

A cedar, 14 ins. diam., bears N. 26° E., 66.8 ft. dist., mkd. NE1/16 S25 BT.

A white fir, 8 ins. diam., bears S. 23° E., 28.4 ft. dist., mkd. NE1/16 S25 BT.

LEGEND

- ◇ Original corner previously remonumented
- Corner previously established or reestablished

LEGAL SUBDIVISION	OFFICIAL ACRES
SECTION 25	
LOT 1	39.31
TOTAL AREA	39.31
FEDERAL INTEREST LAND RESURVEYED	

