

TOWNSHIP 23 SOUTH, RANGE 6 WEST, OF THE WILLAMETTE MERIDIAN, OREGON

DEPENDENT RESURVEY

Date: 10/12/2020 By: JC
This survey consists of:
Map: PLAT: T23-6 2020-1
Narrative: VOL. 59 PG 23795
Corner Rpt: ALL INFORMATION IS ON THE PLAT

DOUGLAS COUNTY
SURVEYOR

This plat constitutes the entire record of the dependent resurvey of a portion of the north boundary (Fifth Standard Parallel South), Township 23 South, Range 6 West, Willamette Meridian, Oregon.

The direction of the line is based on the true meridian as determined by Global Positioning System (GPS) techniques and carried forward by sustained angulation using conventional survey techniques. All measurements along the line were derived through the use of electronic measuring equipment. Measured distances and directions have been adjusted by computer software that incorporates a least squares adjustment routine. The adjusted mean bearings and mean horizontal ground elevation distances are reported to the nearest second and 0.01 foot.

The lottings and areas are as shown on the plat approved August 24, 1960.

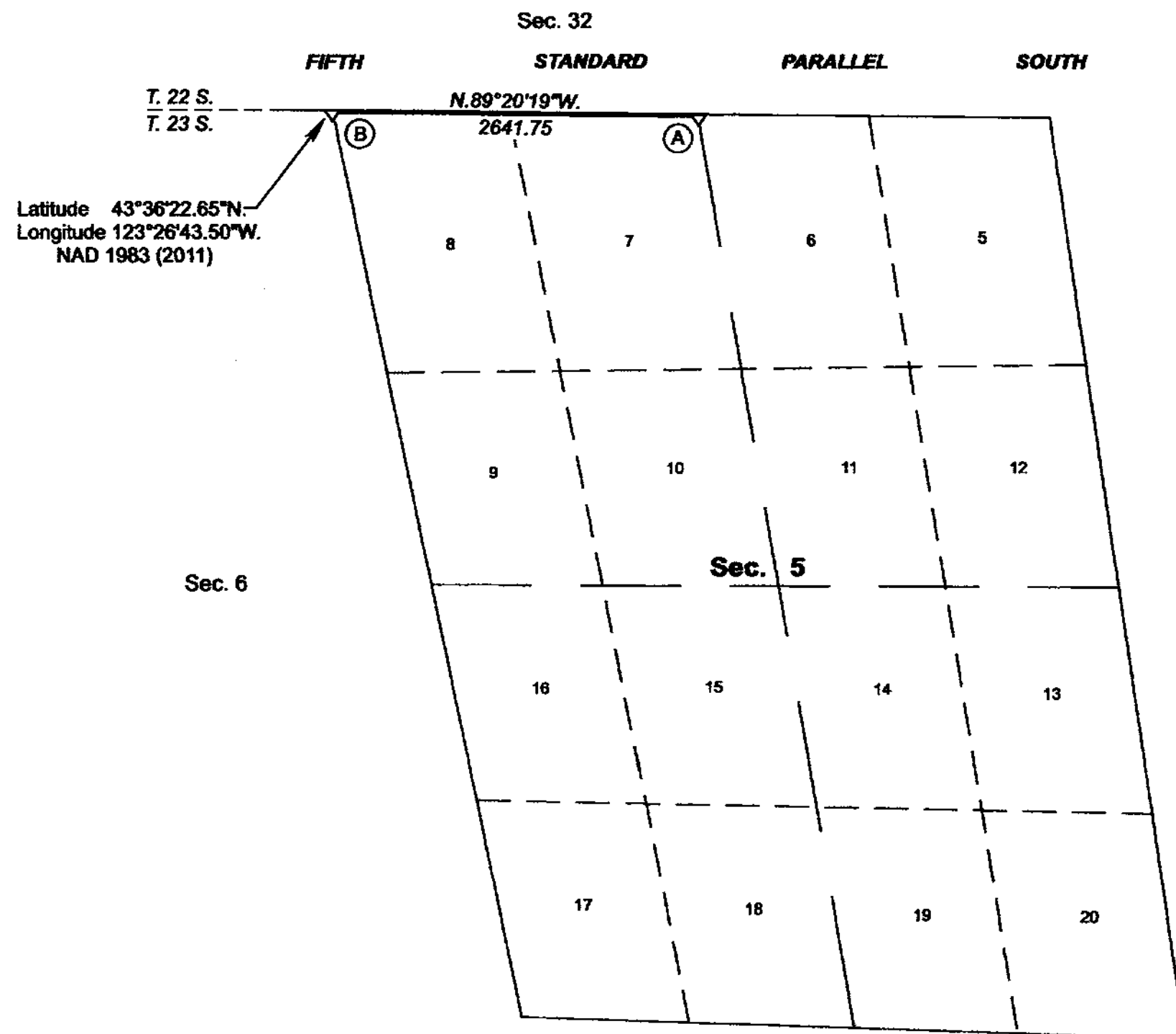
Preliminary to the resurvey, the lines of the official original survey and resurveys were retraced and a search was made for all corners, lines, other calls of the record, and, where available, collateral evidence of local surveys and corners. Identified corners were perpetuated in their original positions. The retracement data was thoroughly verified and only the true line field notes are given herein.

Each new bearing tree has a 2 1/2 inch x 1/4 inch magnetic nail (Mag Nail) driven at the base on right side center, unless otherwise noted in the corner description. Aluminum angle irons were driven alongside each monument unless a similar marker was already in place.

Only those lines bounding Federal interest land were blazed.

The geographic position shown hereon was determined by a tie from a temporary GPS control point, established utilizing dual frequency, carrier phase GPS receivers, and processed using the National Geodetic Survey's Online Positioning User Service (OPUS).

The survey was executed in accordance with the specifications set forth in the Manual of Surveying Instructions (2009), and the special instructions approved June 2, 2017, for Group No. 2874, Oregon, by Jeffrey O. Covington, Cadastral Surveyor, beginning August 14, 2017, and completed August 16, 2017. He was assisted by Kevin G. Mulder and Ernest Q. Lundeen, Cadastral Surveyors, and Todd R. Jennings, Dale A. Mustain, and Logan B. Downs, Surveying Technicians.



Latitude 43°36'22.65\"N
Longitude 123°26'43.50\"W
NAD 1983 (2011)



(A) The standard 1/4 sec. cor. of sec. 5 only, on the N. bdy. of the Tp., monumented with an iron post, 1 in. diam., firmly set, projecting 6 ins. above ground, with a brass cap mkd.

1/4 S 5
S C
1955

from which a bearing tree mkd. by Gould, Gawron, and Eggen in 1943-57

A fir, 30 ins. diam., bears S. 17 3/4° E., 31.7 ft. dist., with a healed blaze. (Record, bears S. 20° E.)

and a new bearing tree

A cedar, 19 ins. diam., bears S. 41 3/4° W., 49.0 ft. dist., mkd. 1/4 S5 SC BT.

(B) The standard cor. of secs. 5 and 6 only, on the N. bdy. of the Tp., perpetuated by Douglas County Surveyor's Office, in 1969; monumented with an iron post, 2 1/2 ins. diam., firmly set, projecting 6 ins. above ground, with a brass cap mkd.

T 22 S R 6 W
S 32

S 6 | S 5
S C

T 23 S R 6 W
1955

from which the remains of an original bearing tree

A sawed fir stump, 58 ins. diam., bears S. 25° E., 5.3 ft. dist., with no marks visible on open blaze.

and a bearing tree mkd. by Douglas County Surveyors office in 1969

A hemlock, 24 ins. diam., bears N. 27 1/2° E., 17.7 ft. dist., with a healed double blaze.

and a new bearing tree

A fir, 11 ins. diam., bears S. 50 1/2° E., 28.2 ft. dist., mkd. T23S R6W S5 SC BT.

The history of official surveys pertaining to this survey is as follows:

In 1855, Harvey Gordon and Charles T. Gardner, U.S. Deputy Surveyors, surveyed the Fifth Standard Parallel South through Ranges 6, 7, and part of 8 West, as shown on the official plat of survey approved September 24, 1855.

In 1897, Carl S. Nicklin, U.S. Deputy Surveyor, resurveyed a portion of the Fifth Standard Parallel South along the south boundary of T. 22 S., R. 6 W., and subdivided a portion of T. 22 S., R. 6 W., as shown on the official plat of survey approved March 25, 1898.

In 1943-57, Otis O. Gould, Cadastral Engineer, and Joseph S. Gawron and Orville N. Eggen, Cadastral Surveyors, resurveyed the Fifth Standard Parallel South along the north boundary of T. 23 S., R. 6 W., and resurveyed the west boundary and subdivisional lines of T. 23 S., R. 6 W., as shown on the official plat of survey accepted August 24, 1960. (Plat suspended September 22, 1983. Suspension lifted November 23, 1998.)

The following county surveyor file (CS), filed in the Douglas County Surveyor's Office is referred to in the subsequent corner descriptions and is referenced by official title, and year.

Date Name and Registration Number File Number
1969 Douglas County Surveyor's Office CS49/143-100

I, Jeffrey O. Covington, Cadastral Surveyor, HEREBY CERTIFY upon honor, that in pursuance of special instructions bearing the approval date of the 2nd day of June, 2017, and the assignment instructions bearing the date of the 2nd day of June, 2017, I have dependently resurveyed a portion of the north boundary (Fifth Standard Parallel South), Township 23 South, Range 6 West, Willamette Meridian, Oregon, which is represented upon this plat as having been executed by me and under my direction; and that said survey has been made in strict conformity with said special instructions, the Manual of Surveying Instructions, and in the specific manner described on this plat.

Jeffrey O. Covington
Cadastral Surveyor

July 1, 2020
Date

LEGEND
◇ Original corner previously remonumented

UNITED STATES DEPARTMENT OF THE INTERIOR
BUREAU OF LAND MANAGEMENT

Portland, Oregon

The survey represented by this plat, having been correctly executed in accordance with the requirements of law and the regulations of this Bureau, is hereby accepted.

For the Director
Mary J. M. Havel
Chief Cadastral Surveyor of Oregon

July 14, 2020
Date



OFFICIALLY FILED: 8/21/2020