

# TOWNSHIP 23 SOUTH, RANGE 6 WEST, OF THE WILLAMETTE MERIDIAN, OREGON

## CORRECTIVE DEPENDENT RESURVEY AND DEPENDENT RESURVEY

FILED

Date: 2/9/1999 By: JP

This survey consists of:

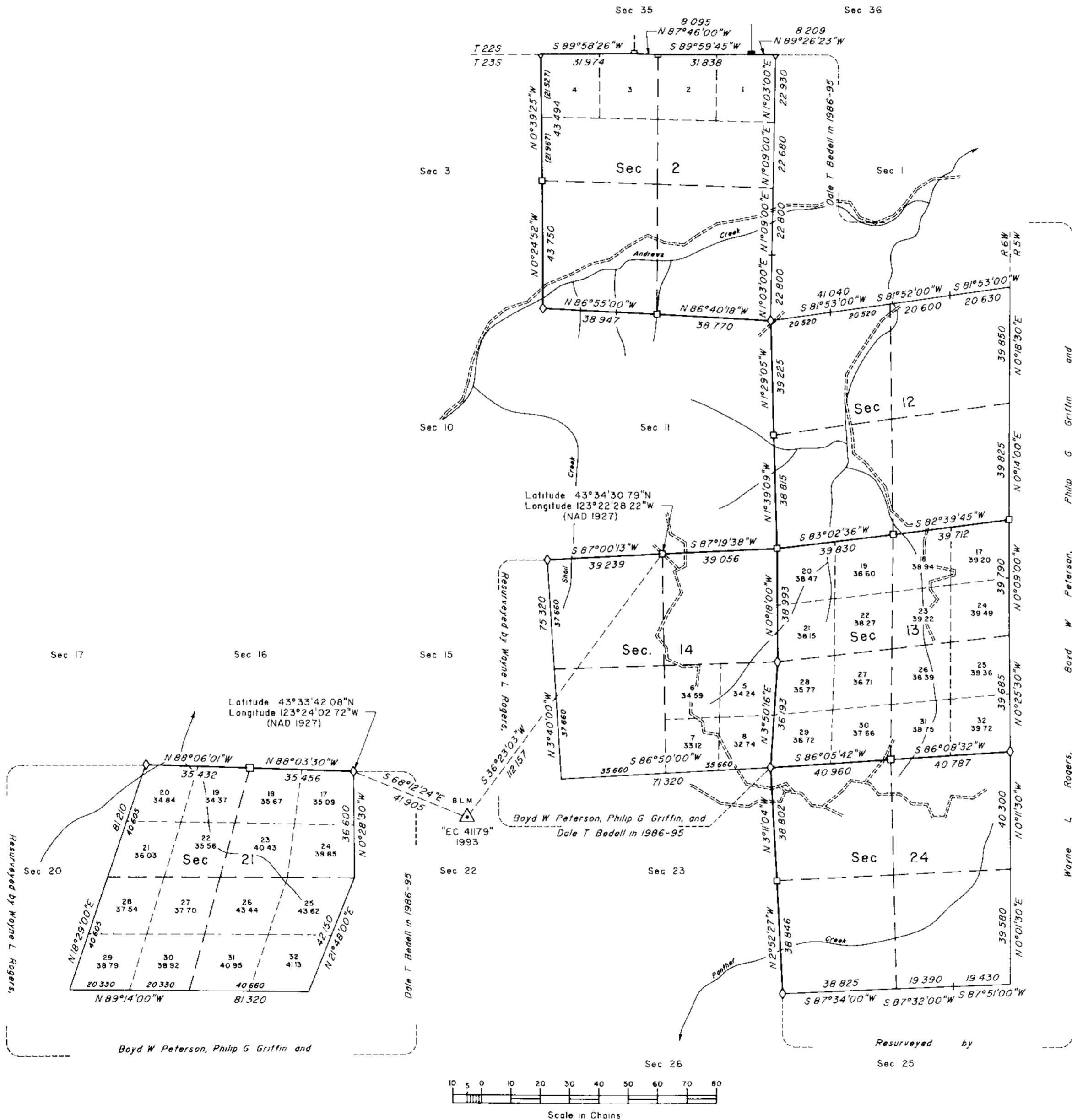
Map:

Narrative: Vol 52, Pgs

Corner Rpt. 19950-19970

**DOUGLAS COUNTY SURVEYOR**

FIFTH STANDARD PARALLEL SOUTH



A history of surveys is contained in the field notes

This plat represents a corrective dependent resurvey of a portion of the subdivision lines, and the dependent resurvey of a portion of the north boundary (Fifth Standard Parallel South) and subdivision lines, T 23 S., R. 6 W., Willamette Meridian, Oregon, designed to restore the corners in their true original locations according to the best available evidence

Measured distances and directions have been adjusted by Cadastral Measurement Management (CMM), a computer program that incorporates a least squares adjustment routine. The adjusted bearings and distances are reported to the nearest second and 0.01 chain

Except as shown hereon, the lottings and areas are as shown on the plat approved April 2, 1879

The survey was executed by Wayne L Rogers, Cadastral Surveyor, and Robert H Browning, Surveying Technician, beginning May 22, 1996, and completed November 12, 1996, pursuant to Special Instructions dated April 25, 1996, under Group Number 1803, Oregon

Timber in this area consists of fir, hemlock, cedar, oak, madrone, maple, chinquapin, yew, ash, and alder

The tie to the geodetic control station is reported as mean bearing and sea level distance

**LEGEND**

- ◊ Original corner previously remonumented
- Corner previously established or reestablished
- Corner previously established or reestablished Remonumented this survey

UNITED STATES DEPARTMENT OF THE INTERIOR  
BUREAU OF LAND MANAGEMENT

Portland, Oregon September 4, 1998

This plat is strictly conformable to the approved field notes, and the survey, having been correctly executed in accordance with the requirements of law and the regulations of this Bureau, is hereby accepted.

For the Director

*Wayne L Rogers*

Chief Cadastral Surveyor of Oregon