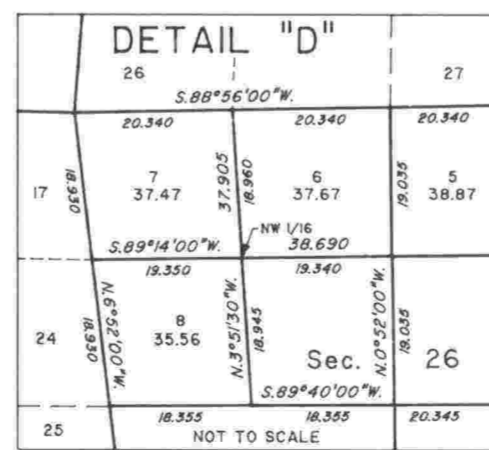
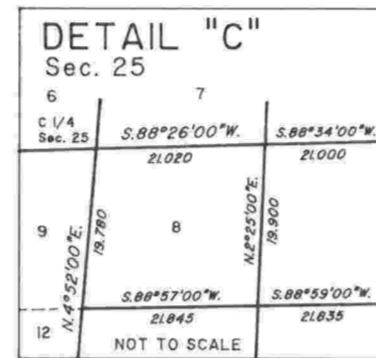
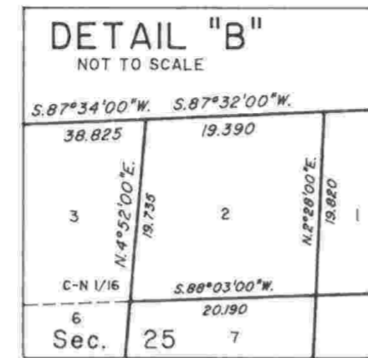
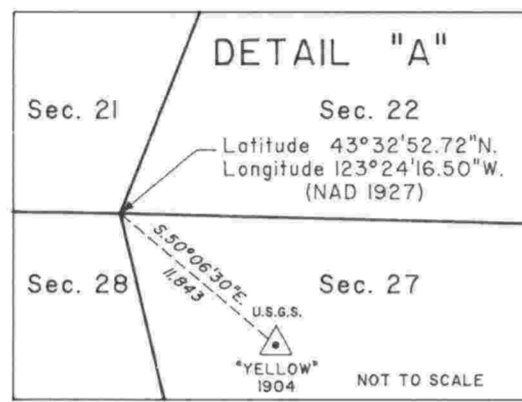
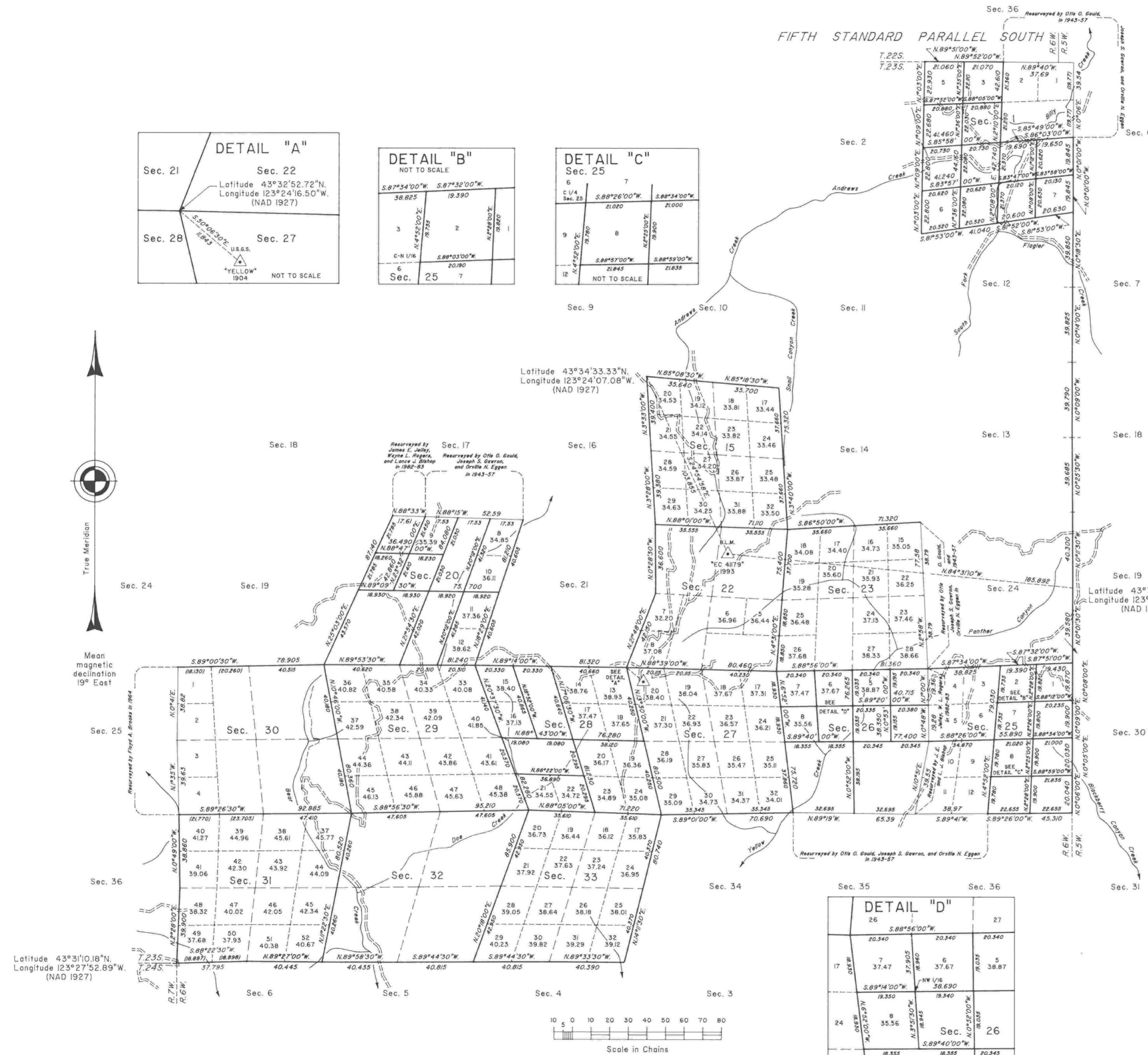


# TOWNSHIP 23 SOUTH, RANGE 6 WEST, OF THE WILLAMETTE MERIDIAN, OREGON

## CORRECTIVE DEPENDENT RESURVEY, CORRECTIVE SURVEY, DEPENDENT RESURVEY, AND SUBDIVISION OF SECTIONS



A history of surveys is contained in the field notes.

This plat represents a corrective dependent resurvey of portions of the south, east, and west boundaries and subdivisional lines, the corrective survey of sections 20 and 26, the dependent resurvey of a portion of the north boundary (Fifth Standard Parallel South), south and east boundaries and subdivisional lines, T. 23 S., R. 6 W., Willamette Meridian, Oregon, designed to restore the corners in their true original locations according to the best available evidence, and the subdivision of sections 1, 25, and 28.

Except as shown hereon, the lottings and areas are as shown on the plat approved April 2, 1879, and the plats accepted August 24, 1960, February 16, 1965, and February 8, 1985.

The survey was executed by Wayne L. Rogers, Boyd W. Peterson, Philip G. Griffin, and Dale T. Bedell, Cadastral Surveyors, and Robert H. Browning, Surveying Technician, beginning June 9, 1986, and completed August 22, 1995, pursuant to Special Instructions dated April 19, 1985, Amendment to Special Instructions dated May 22, 1986, Supplemental Special Instructions dated March 10, 1987, and Second Supplemental Special Instructions dated April 8, 1994, under Group Number 1266, Special Instructions dated February 21, 1992, under Group Number 1637, and Special Instructions dated April 8, 1993, under Group Number 1688, Oregon.

Timber in this area consists of fir, hemlock, cedar, oak, madrone, maple, chinquapin, yew, ash, and alder.

Ties to geodetic control stations are reported as mean bearings and sea level distances.

UNITED STATES DEPARTMENT OF THE INTERIOR  
BUREAU OF LAND MANAGEMENT

Portland, Oregon      October 17, 1995

This plat is strictly conformable to the approved field notes, and the survey, having been correctly executed in accordance with the requirements of law and the regulations of this Bureau, is hereby accepted.

For the Director  
*Wayne M. Gardner*  
Chief Cadastral Surveyor of Oregon