

TOWNSHIP 23 SOUTH, RANGE 6 WEST, OF THE WILLAMETTE MERIDIAN, OREGON.

CORRECTIVE DEPENDENT RESURVEY, DEPENDENT RESURVEY AND SUBDIVISION OF SECTIONS

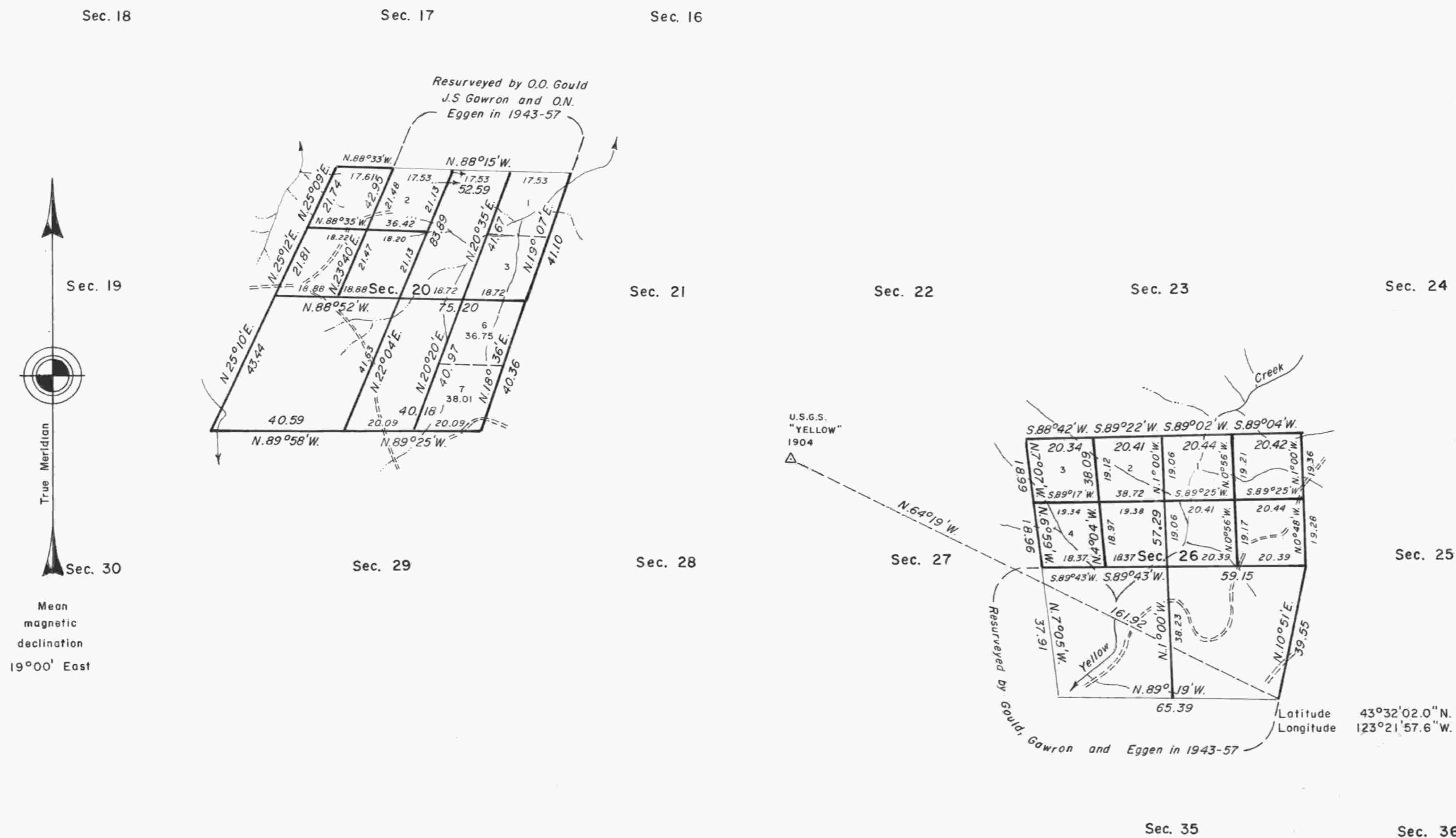
A history of surveys is contained in the field notes.

This plat represents a corrective dependent resurvey of the east one-half mile of the line between sections 20 and 29, dependent resurvey of a portion of the subdivisional lines, T. 23 S., R. 6 W., Willamette Meridian, Oregon, and the subdivision of sections 20 and 26.

Except as shown hereon, the lottings and areas are as shown on the plat approved April 2, 1879 and the plat accepted August 24, 1960.

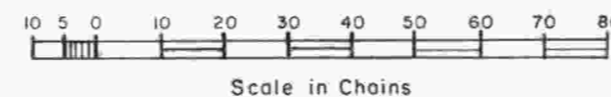
The survey was executed by James E. Jelley, Wayne L. Rogers, and Lance J. Bishop, Cadastral Surveyors, beginning June 28, 1982, and completed November 3, 1983, pursuant to Special Instructions dated March 31, 1982, Supplemental Special Instructions dated September 28, 1982, and Second Supplemental Special Instructions dated September 28, 1983, under Group No. 1098, Oregon.

Timber in this area consists of fir, hemlock, pine, oak, maple, madrone, chinquapin, alder, ash, and yew.



"Suspended April 4, 1994 see file 9632 (OR 942)"

"Suspension Lifted, June 21, 1996, File 9632 (OR957). Refer to plat accepted October 17, 1995."



UNITED STATES DEPARTMENT OF THE INTERIOR
BUREAU OF LAND MANAGEMENT
Portland, Oregon February 8, 1985

This plat is strictly conformable to the approved field notes, and the survey, having been correctly executed in accordance with the requirements of law and the regulations of this Bureau, is hereby accepted.

For the Director

William W. Glenn

Chief Cadastral Surveyor of Oregon