

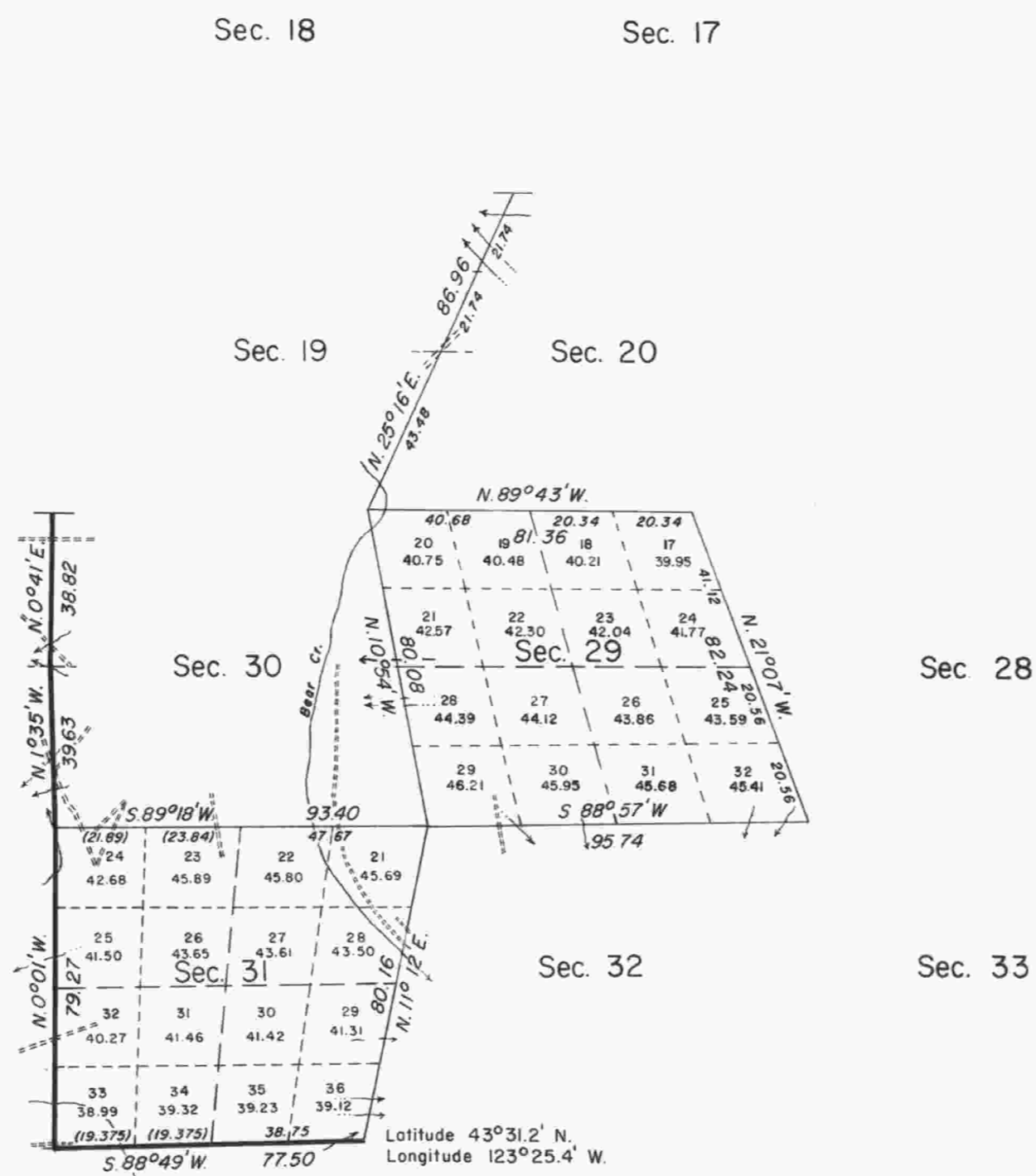
# TOWNSHIP 23 SOUTH, RANGE 6 WEST, OF THE WILLAMETTE MERIDIAN, OREGON.

## DEPENDENT RESURVEY

This plat represents a retracement and reestablishment of a portion of the south and west boundaries, and a portion of the subdivisional lines, T. 23 S., R. 6 W., Willamette Meridian, Oregon, designed to restore the corners in their true original locations according to the best available evidence.

T. 23 S., R. 6 W., was resurveyed by Otis O. Gould, Joseph S. Gawron, and Orville N. Eggen, in the period from 1943 to 1957.

Dependent resurvey of a portion of the south and west boundaries and a portion of the subdivisional lines of T. 23 S., R. 6 W., Willamette Meridian, Oregon, executed by Floyd A. Brooks, April 23 to May 12, 1964, under Supplemental Special Instructions dated May 4, 1964, and, April 8, 1964, which provide for the surveys included under Group No. 244, Oregon.

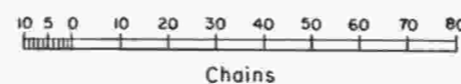


UNITED STATES DEPARTMENT OF THE INTERIOR  
BUREAU OF LAND MANAGEMENT  
Washington, D. C. February 16, 1965

This plat is strictly conformable to the approved field notes, and the survey, having been correctly executed in accordance with the requirements of law and the regulations of this Bureau, is hereby accepted.

For the Director

Chief, Division of Engineering



Area resurveyed: 1,362.72 Acres

"SUSPENDED, September 22, 1983, see File 9622.1 (OR942)."

Timber in this area consists of Douglas fir, hemlock, and red cedar.

"Suspension Lifted, February 8, 1985, File 9622.1 (OR942). Refer to plat accepted February 8, 1985."

"Suspended February 6, 1992, see file 9632 (OR942)"

"Suspension Lifted, June 21, 1996, File 9632 (OR957)."

Refer to plat accepted October 17, 1995."