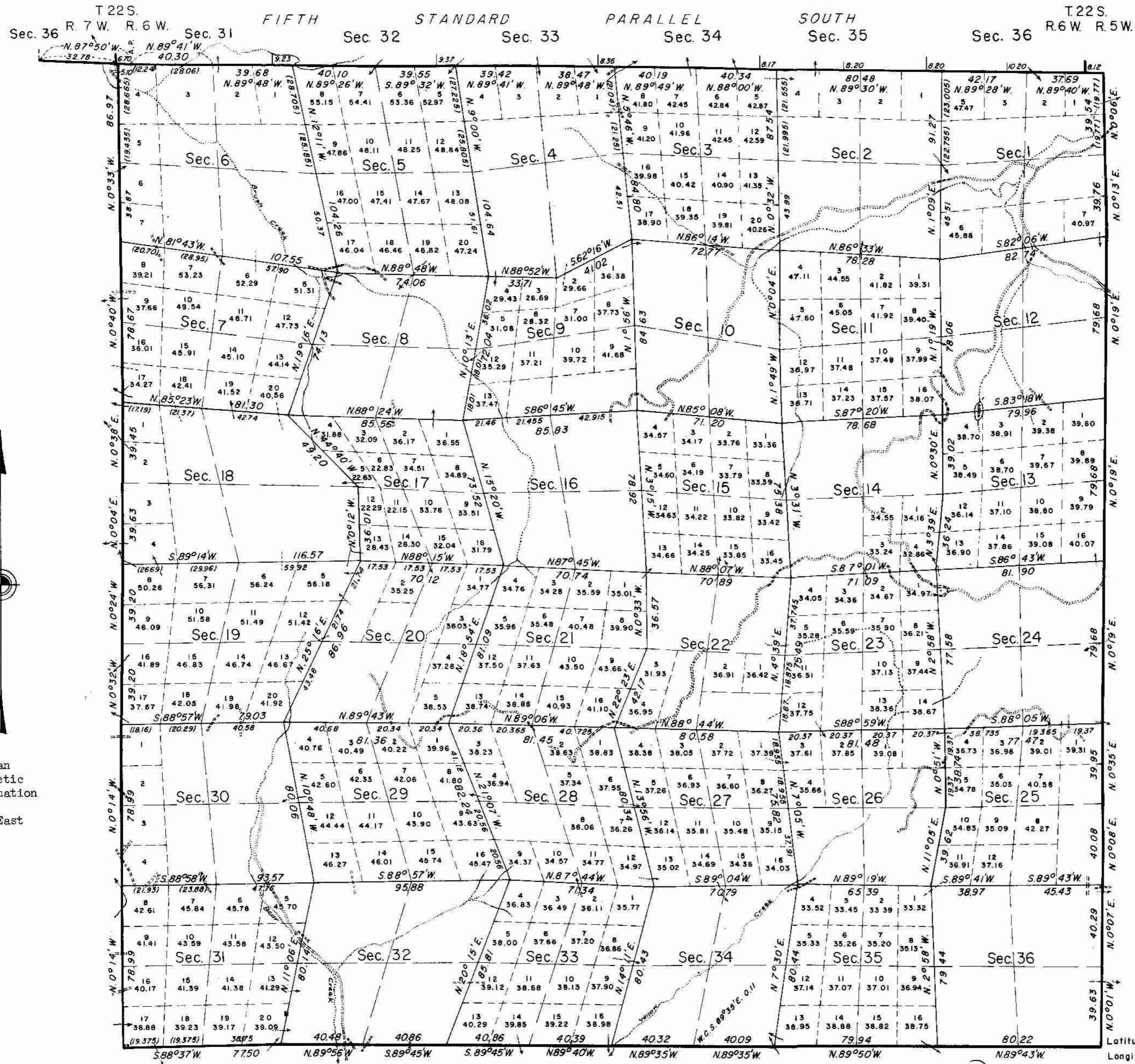


TOWNSHIP 23 SOUTH, RANGE 6 WEST, OF THE WILLAMETTE MERIDIAN, OREGON.

DEPENDENT RESURVEY



This plat represents a retracement and reestablishment of the Fifth Standard Parallel South (North boundary of T. 23 S., R. 6 W. and a portion of the North boundary of T. 23 S., R. 7 W.), the East, South, and West boundaries and Subdivisional Lines, designed to restore the corners in their true original location according to the best available evidence; and, excepting as new or modified vacant subdivisions are shown hereon, the lottings and areas are as shown on the plat approved April 2, 1879.

The North boundary was surveyed by Gordon and Gardner in 1855, and a portion of the North boundary was resurveyed by C. S. Nicklin in 1897.

The South and East boundaries were surveyed by Elder and Gile in 1853.

The West boundary was surveyed by W. H. Byars in 1881.

A portion of the South boundary was resurveyed by W. R. Whipple in 1891.

The Subdivisional Lines were surveyed by W. Thiel in 1873.

J. McQuinn surveyed the Subdivisional Lines and also resurveyed a portion of the Subdivisional Lines in 1883.

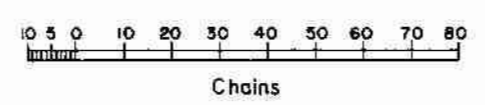
Dependent resurvey of the Fifth Standard Parallel South along the North boundary of T. 23 S., R. 6 W., and a portion of the North boundary of T. 23 S., R. 7 W., the East, South, and West boundaries and Subdivisional Lines of T. 23 S., R. 6 W., Willamette Meridian, Oregon, executed by Otis O. Gould, Joseph S. Gawron, and Orville N. Eggen, June 1, 1943 to October 17, 1957, under Special Instructions dated April 8, 1940, which provide for the surveys included under Group No. 244, Oregon.

UNITED STATES DEPARTMENT OF THE INTERIOR
BUREAU OF LAND MANAGEMENT
Washington, D. C. August 24, 1960

This plat is strictly conformable to the approved field notes, and the survey, having been correctly executed in accordance with the requirements of law and the regulations of this Bureau, is hereby accepted.

For the Director
Clark J. Sumner
Acting Cadastral Engineering Staff Officer

Timber in this area consists of Douglas fir, hemlock, and red cedar.



Area resurveyed: 22,736.59 acres

*SUSPENDED
9/22/83
PILE 9622.1 (099.72)
2/18/85*

Latitude 43° 31.2' N.
Longitude 123° 20.7' W.