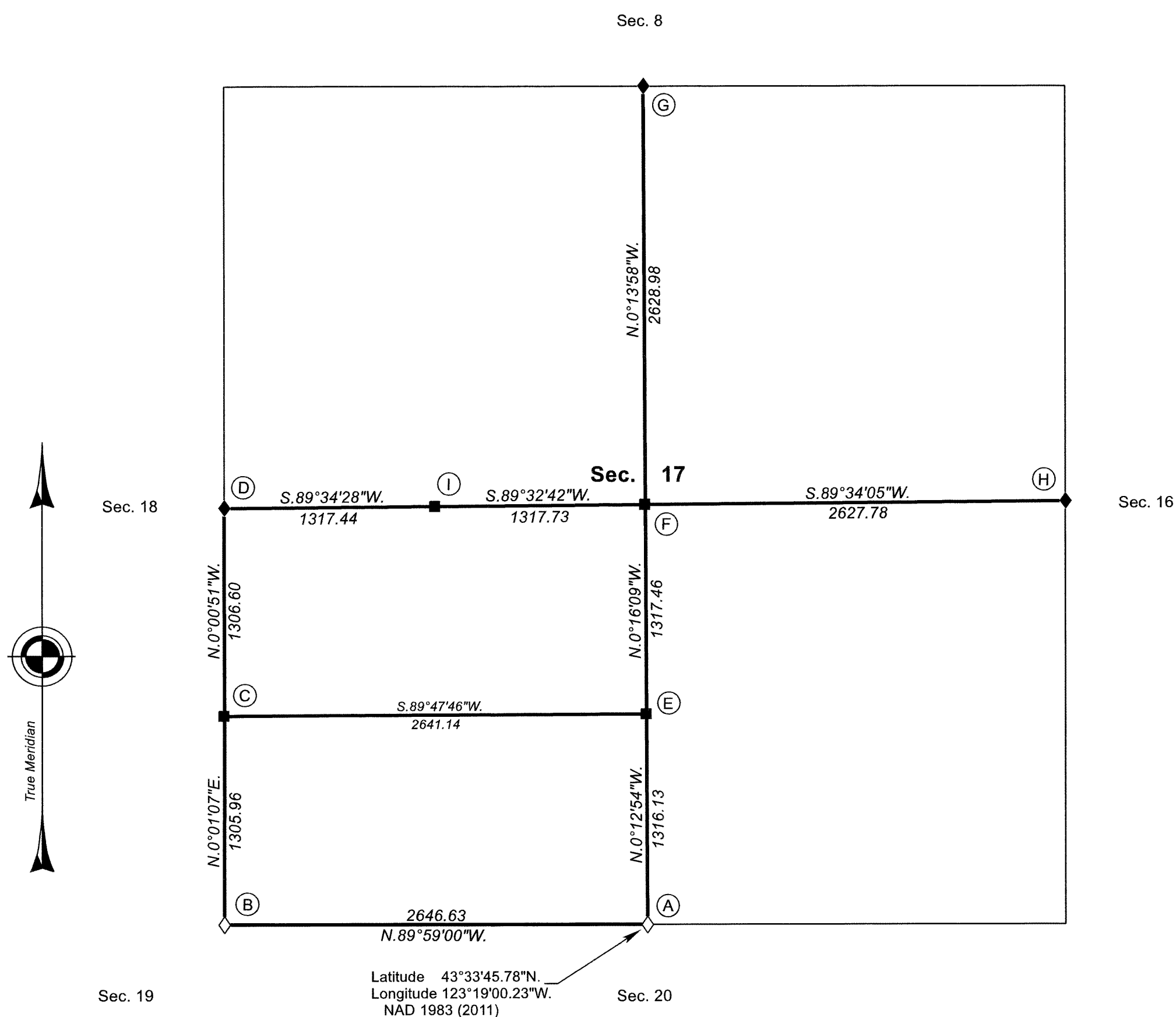


FILED PG 1/3
 Date: 9/20/2022 By: JC
 This survey consists of:
 Map: PLAT: T23-5 2022-1
 VOL. 59 PGS 24033-24035
 NO SEPARATE LINES NOTES
 Corner Rpt: ALL INFORMATION IS ON THE PLAT
 DOUGLAS COUNTY
 SURVEYOR

TOWNSHIP 23 SOUTH, RANGE 5 WEST, OF THE WILLAMETTE MERIDIAN, OREGON

SHEET 1 OF 3

DEPENDENT RESURVEY AND SUBDIVISION OF SECTION 17



The history of official surveys pertaining to this survey is as follows:

In 1853, Robert Elder and Henry S. Gile, U.S. Deputy Surveyors, surveyed the subdivisional lines, as shown on the official plat of survey approved June 30, 1853.

In 2010, A. Bert Skeesick, Cadastral Surveyor, resurveyed a portion of the subdivisional lines and subdivided section 19, as shown on the official plat of survey accepted November 16, 2011.

The following map files (M), county surveyor files (CS), and partition plat, filed in the Douglas County Surveyor's Office are referred to in subsequent corner descriptions and are referenced by surveyor's last name, official title or Professional Land Surveyor (PLS) No., and year.

Date	Name and Registration Number	File Number
1959	James W. Byron, Douglas County Deputy Surveyor	CS49/42
1969	Douglas County Surveyors Office	CS54/16-57A
1989	Robert G. Dean, PLS No. 1803	CS63/67-3; M107-61
1989	Larry E. Monrean, PLS No. 1830	CS62/63-5C
1993	Ken W. Hoffine, PLS No. 2291	M117-72
2003	David E. Edwards, PLS No. 2339	M141-60
2007	F. Neil Hibbs, PLS No. 52989	Partition Plat 2007-0159 A-C

LEGAL SUBDIVISION	OFFICIAL ACRES
SECTION 17	
SW1/4 SW1/4	39.70
SE1/4 SW1/4	39.87
TOTAL AREA	79.57
FEDERAL INTEREST LAND RESURVEYED	

This plat constitutes the entire record of the dependent resurvey of a portion of the subdivisional lines, designed to restore the corners in their true original locations according to the best available evidence, and the subdivision of section 17, Township 23 South, Range 5 West, Willamette Meridian, Oregon.

The directions of the lines are based on the true meridian as determined by Global Positioning Systems (GPS) techniques and carried forward by sustained angulation using conventional survey techniques. All measurements along the lines were derived through the use of GPS and conventional survey techniques. Measured distances and directions have been adjusted by computer software that incorporates a least squares adjustment routine. The adjusted mean bearings and mean horizontal ground elevation distances are reported to the nearest second and 0.01 foot.

Official areas based on the measurements of this survey have been returned for Federal interest land where indicated. Aliquot part legal subdivisions retain their aliquot characteristics and refer to precisely the same land as that which was previously identified by its original survey or description. A lot can only be subdivided by survey or supplemental plat. Except as indicated hereon, the lottings and areas are as shown on the plat approved June 30, 1853.

Preliminary to the resurvey, the lines of the official original surveys and resurveys were retraced and a search was made for all corners, lines, other calls of record, and, where available, collateral evidence of local surveys and corners. Identified corners were perpetuated in their original positions. The retracement data was thoroughly verified and only the true line field data are given hereon.

A magnet in a white plastic case was deposited at the base of each stainless steel post, and each new bearing tree has a 2 1/2 inch x 1/4 inch magnetic nail (Mag Nail) driven at the base on the right side center, unless otherwise noted in the corner description. Only those lines bounding Federal interest land were blazed.

The geographic position shown hereon was determined by tie from temporary GPS control points, utilizing dual frequency, carrier phase GPS receivers, and processed using the National Geodetic Survey's Online Positioning User Service (OPUS).

The survey was executed in accordance with the specifications set forth in the Manual of Surveying Instructions (2009), and the special instructions approved October 7, 2019, for Group No. 2961, Oregon, by Jeffrey O. Covington, Cadastral Surveyor, beginning October 17, 2019, and completed January 7, 2020. He was assisted by Robert NMI Durning and Jesse S. Smith, Surveying Technicians.

LEGEND

- ◇ Original corner previously remonumented
- ◆ Original corner remonumented this survey
- Corner previously established or reestablished; remonumented this survey

UNITED STATES DEPARTMENT OF THE INTERIOR
 BUREAU OF LAND MANAGEMENT

Portland, Oregon

The survey represented by this plat, having been correctly executed in accordance with the requirements of law and the regulations of this Bureau, is hereby accepted.

For the Director
Mary J. M. Hartzel
 Chief Cadastral Surveyor of Oregon

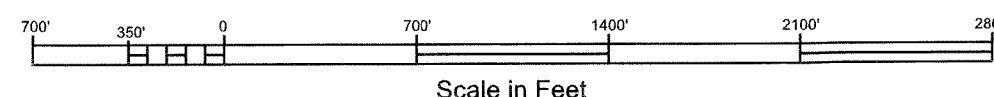
April 26, 2022
 Date

I, Jeffrey O. Covington, Cadastral Surveyor, HEREBY CERTIFY upon honor, that in pursuance of special instructions bearing the approval date of the 7th day of October, 2019, and the assignment instructions bearing the date of the 7th day of October, 2019, I have dependently resurveyed a portion of the subdivisional lines and subdivided section 17, Township 23 South, Range 5 West, Willamette Meridian, Oregon, which is represented upon this plat as having been executed by me and under my direction; and that said survey has been made in strict conformity with said special instructions, the Manual of Surveying Instructions, and in the specific manner described on this plat. (Jeffrey O. Covington was not available for signature.)

Mary J. M. Hartzel
 Chief Cadastral Surveyor of Oregon

April 26, 2022
 Date

B. C. W.



OFFICIALLY FILED: 7/21/2022

TOWNSHIP 23 SOUTH, RANGE 5 WEST, OF THE WILLAMETTE MERIDIAN, OREGON

DEPENDENT RESURVEY AND SUBDIVISION OF SECTION 17

(A) The 1/4 sec. cor. of secs. 17 and 20, perpetuated by Byron, Douglas County Deputy Surveyor, in 1959; subsequently perpetuated by person(s) unknown; monumented with an iron post, 1 1/4 ins. diam., firmly set, projecting 8 ins. above ground, with a brass cap mkd.

COUNTY SURVEYORS OFFICE
T 23 S R 5 W
S 17
1/4 S 20
1959

from which the remains of an original bearing tree

A decayed fir stump, 30 ins. diam., bears N. 20° E., 68.6 ft. dist., with scribe marks 1/4 BT visible on open blaze.

and the remains of the bearing trees mkd. by Byron

A decayed fir stump, 22 ins. diam., bears S. 52° W., 45.0 ft. dist., with a healed double blaze.

A broken, decayed fir stump, 24 ins. diam., bears N. 2° W., 97.7 ft. dist., alongside of which is a down decayed fir trunk, no marks visible.

and the remains of a bearing tree mkd. by person(s) unknown

A fir stump, 16 ins. diam., bears N. 1° E., 25.8 ft. dist., with a healed blaze.

and new bearing trees

A fir, 6 ins. diam., bears S. 18 1/4° W., 23.5 ft. dist., mkd. 1/4 S20 BT.

A fir, 11 ins. diam., bears N. 6° W., 24.9 ft. dist., mkd. 1/4 S17 BT.

From the corner

W., 105 ft. dist., spur, slopes S. 10° E.

(B) The cor. of secs. 17, 18, 19, and 20, reported by Skeesick in 2010, monumented with a stainless steel post, 2 1/2 ins. diam., firmly set, projecting 14 ins. above ground, with a brass cap mkd.

T 23 S R 5 W
S 18 | S 17
S 19 | S 20
2010

from which the remains of the bearing trees reported by Skeesick

A fir, 30 ins. diam., bears N. 37° E., 14.0 ft. dist., with a healed blaze.

A fir, 26 ins. diam., bears S. 35° E., 26.2 ft. dist., with axe marks visible on bark.

A fir snag, 56 ins. diam., bears S. 84 1/4° W., 35.0 ft. dist., with a healed blaze.

A fir, 6 ins. diam., bears N. 71 1/2° W., 10.8 ft. dist., with scribe marks X BT visible on partially healed double blaze.

A decayed fir snag, size indeterminate, bears N. 14° W., 7.3 ft. dist., with scribe marks T23S S visible on open blaze. (Original)

and a new bearing tree

A fir, 25 ins. diam., bears S. 63 1/2° W., 19.5 ft. dist., mkd. T23S R5W S19 BT on bark.

From the corner

E., 105 ft. dist., spur, slopes N. 20° E. N., 115 ft. dist., draw, drains N. 25° E.

A search was made for the original line tree on the north half of the south half of the section line between sections 17 and 18, and none were recovered.

(C) The S 1/16 sec. cor. of secs. 17 and 18, established by Edwards, PLS No. 2339, in 2003; and is accepted as the cor.; monumented with an iron rod, 5/8 in. diam., firmly set, projecting 2 ins. above ground, with a red plastic cap mkd. D.A. Edwards L.S. 2339, from which the bearing trees mkd. by Edwards

A fir, 18 ins. diam., bears S. 42° E., 25.3 ft. dist., with a healed blaze.

A fir, 17 ins. diam., bears N. 21° W., 14.6 ft. dist., with a healed blaze.

At the corner point

Set a stainless steel post, 28 ins. long, 2 1/2 ins. diam., 25 ins. in the ground, directly over the iron rod, with brass cap mkd.

S 1/16
S 18 | S 17
2019

From the corner

N., 21 ft. dist., a down woven and barbed wire fence line, bears E. and W.

(D) The 1/4 sec. cor. of secs. 17 and 18, perpetuated by Hoffine, PLS No. 2291, in 1993; monumented with an iron rod, 5/8 in. diam., firmly set, projecting 5 ins. above ground, with an aluminum cap mkd. LONE ROCK TIMBER T23S R5W 1/4 S18 I S17 1993 PLS 2291, from which the remains of an original bearing tree

A decayed fir stump, size indeterminate, bears N. 31° W., 55.4 ft. dist., no marks visible.

and the remains of the bearing trees mkd. by Hoffine

A decayed fir stump, 15 ins. diam., bears N. 5° E., 23.5 ft. dist., with a hollowed blaze.

A decayed fir stump, 25 ins. diam., bears N. 84 1/2° E., 36.4 ft. dist., with scribe marks 4 S17 BT visible on open blaze.

A fir, 26 ins. diam., bears S. 38 1/4° W., 9.1 ft. dist., with a healed blaze.

At the corner point

Set a stainless steel post, 28 ins. long, 2 1/2 ins. diam., 23 ins. in the ground, directly over the iron rod, with brass cap mkd.

T 23 S R 5 W
1/4
S 18 | S 17
2019

and new bearing trees

A fir, 6 ins. diam., bears N. 44 1/4° E., 7.1 ft. dist., mkd. 1/4 S17 BT.

A fir, 5 ins. diam., bears N. 11 3/4° W., 8.9 ft. dist., mkd. 1/4 S18 BT.

From this cor., a point established by person(s) unknown, reported by Douglas County Surveyor's Office, in 1969, for unknown purpose, and was not utilized for control in this survey, bears S. 86° 15' 13" E., 8.04 ft. dist.; monumented with an iron rod, 5/8 in. diam., firmly set, with top 8 ins. below the surface of the ground.

Corner is located at the cor. of a woven and barbed wire fence line, bears S. and W.

(E) The center S 1/16 sec. cor. of sec. 17, established by Edwards, PLS No. 2339, in 2003; and is accepted as the cor.; monumented with an iron rod, 5/8 in. diam., firmly set, projecting 3 ins. above ground, with a red plastic cap mkd. D.A. Edwards L.S. 2339, from which the bearing trees mkd. by Edwards

A fir, 10 ins. diam., bears N. 33° E., 11.0 ft. dist., with a healed blaze.

A fir, 7 ins. diam., bears N. 46 3/4° E., 10.2 ft. dist., with a healed blaze.

At the corner point

Set a stainless steel post, 28 ins. long, 2 1/2 ins. diam., 25 ins. in the ground, directly over the iron rod, with brass cap mkd.

C
S 1/16 | S 17
C
2019

and a new bearing tree

A fir, 8 ins. diam., bears S. 41° E., 21.4 ft. dist., mkd. CS1/16 S17 BT.

(F) The center 1/4 sec. cor. of sec. 17, established by Hibbs, PLS No. 52989, in 2007; and is accepted as the cor.; monumented with an iron rod, 5/8 in. diam., firmly set, projecting 4 ins. above ground, with a yellow plastic cap mkd. HIBBS LS 52989, from which the bearing trees mkd. by Hibbs

A fir, 16 ins. diam., bears N. 81 1/2° E., 82.5 ft. dist., with a healed blaze.

A fir, 14 ins. diam., bears S. 48° E., 42.6 ft. dist., with a healed blaze.

A maple, 36 ins. diam., bears S. 47 3/4° W., 24.7 ft. dist., with scribe marks 4 S17 B visible on partially healed blaze.

A fir, 13 ins. diam., bears N. 32 3/4° W., 92.0 ft. dist., with a healed blaze.

At the corner point

Set a stainless steel post, 28 ins. long, 2 1/2 ins. diam., 24 ins. in the ground, directly over the iron rod, with brass cap mkd.

T 23 S R 5 W
C 1/4 S 17
2019

FILED PG 2/3
Date: 9/20/2022 By: JC
This survey consists of:
Map: PLAT: T23-5 2022-1
VOL. 59 PGS 24033-24035
DOUGLAS COUNTY SURVEYOR

UNITED STATES DEPARTMENT OF THE INTERIOR
BUREAU OF LAND MANAGEMENT

Portland, Oregon

The survey represented by this plat, having been correctly executed in accordance with the requirements of law and the regulations of this Bureau, is hereby accepted.

For the Director
Marilyn M. Hartzel
Chief Cadastral Surveyor of Oregon

April 26, 2022
Date

TOWNSHIP 23 SOUTH, RANGE 5 WEST, OF THE WILLAMETTE MERIDIAN, OREGON

DEPENDENT RESURVEY AND SUBDIVISION OF SECTION 17

FILED PG 3/3

Date: 9/20/2022 By: JC

This survey consists of:

Map: PLAT: T23-5 2022-1

VOL. 59 PGS 24033-24035

Corner Rep: NO SEPARATE LINES NOTES
ALL INFORMATION IS ON THE PLAT

DOUGLAS COUNTY
SURVEYOR

OFFICIALLY FILED: 7/21/2022

Ⓒ The 1/4 sec. cor. of secs. 8 and 17, perpetuated by Dean, PLS No. 1803, in 1989; subsequently perpetuated by Monrean, PLS No. 1830, in 1989; from original evidence no longer in existence; monumented with an iron rod, 3/4 in. diam., firmly set, projecting 6 ins. above ground, with a red plastic cap mkd. LS 1803, from which the remains of the bearing trees mkd. by Monrean

A decayed fir stump, 12 ins. diam., bears S. 32 1/2° E., 17.6 ft. dist., no marks visible.

A decayed fir stump, 10 ins. diam., bears S. 48° W., 27.5 ft. dist., with a hollow blaze.

A chinquapin, 14 ins. diam., bears N. 33 1/2° W., 22.0 ft. dist., with no marks visible on partially healed blaze. Tree apparently regrown orig. NW BT.

At the corner point

Set a stainless steel post, 28 ins. long, 2 1/2 ins. diam., 23 ins. in the ground, directly over the iron rod, with brass cap mkd.

T 23 S R 5 W
S 8
1/4 ———
S 17
2019

and a new bearing tree

A fir, 4 ins. diam., bears S. 40° W., 6.5 ft. dist., mkd. X BT.

Corner is located W., 40 ft. dist. of a ravine, drains N. 15° W.

Ⓗ The 1/4 sec. cor. of secs. 16 and 17, perpetuated by person(s) unknown; subsequently perpetuated by Byron, Douglas County Deputy Surveyor, in 1959; from original evidence no longer in existence; monumented with an iron axle shaft, 1 1/2 ins. diam., firmly set, projecting 4 ins. above ground, from which the remains of the bearing trees mkd. by Byron

A decayed fir stump, 25 ins. diam., bears N. 63 1/4° E., 112.7 ft. dist., with a healed blaze.

A fir, 22 ins. diam., bears N. 55 1/4° W., 95.9 ft. dist., with a healed double blaze.

At the corner point

Set a stainless steel post, 28 ins. long, 2 1/2 ins. diam., 22 ins. in the ground, directly over the iron axle shaft, with brass cap mkd.

T 23 S R 5 W
1/4
S 17 | S 16
2019

and a new bearing tree

An oak, 6 ins. diam., bears N. 57 3/4° E., 33.2 ft. dist., mkd. 1/4 S16 BT on bark.

Ⓘ The center W 1/16 sec. cor. of sec. 17, established by Hoffine, PLS No. 2291, in 1993; and is accepted as the cor.; monumented with an iron rod, 5/8 in. diam., firmly set, projecting 6 ins. above ground, with an aluminum cap mkd. LONE ROCK TIMBER W 1/16 C-C S17 1993 PLS 2291, from which the remains of the bearing trees mkd. by Hoffine

A decayed fir stump, 16 ins. diam., bears S. 44 1/2° W., 57.8 ft. dist., with a healed blaze.

A decayed fir stump, 15 ins. diam., bears N. 54 3/4° W., 20.8 ft. dist., with scribe marks W 1/16 S17 BT visible on partially healed blaze.

At the corner point

Set a stainless steel post, 28 ins. long, 2 1/2 ins. diam., 27 ins. in the ground, directly over the iron rod, with brass cap mkd.

W 1/16
C ——— C
S 17
2019

and new bearing trees

A fir, 6 ins. diam., bears N. 71° E., 9.3 ft. dist., mkd. CW1/16 S17 BT.

A fir, 5 ins. diam., bears N. 50° W., 8.8 ft. dist., mkd. X BT.

UNITED STATES DEPARTMENT OF THE INTERIOR
BUREAU OF LAND MANAGEMENT

Portland, Oregon

The survey represented by this plat, having been correctly executed in accordance with the requirements of law and the regulations of this Bureau, is hereby accepted.

For the Director

Mary J. M. Hartzel

Chief Cadastral Surveyor of Oregon

April 26, 2022

Date