

TOWNSHIP 23 SOUTH, RANGE 5 WEST, OF THE WILLAMETTE MERIDIAN, OREGON

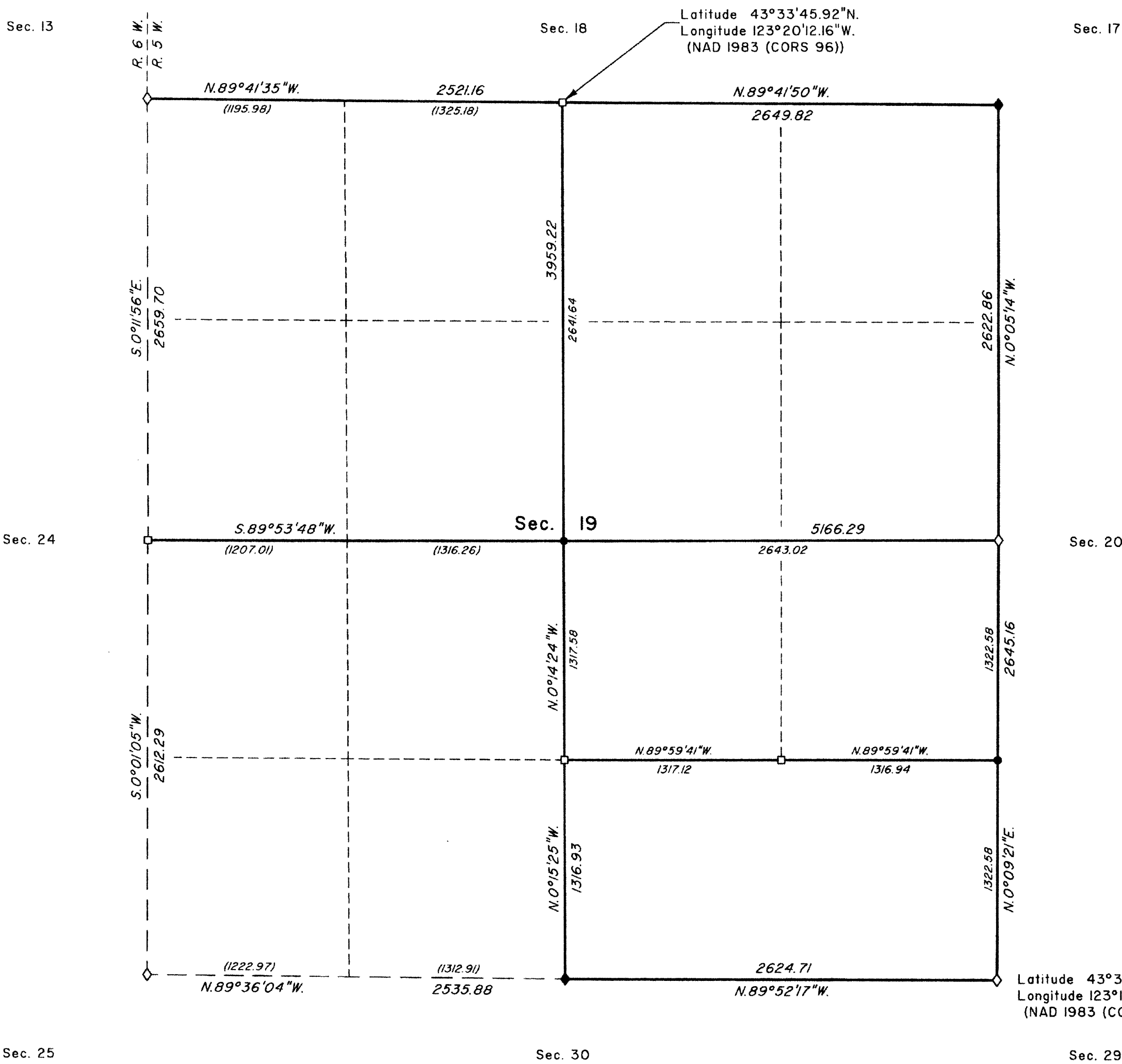
DEPENDENT RESURVEY AND SUBDIVISION OF SECTION 19

FILED

Date: 1/25/2012 By: JC
This survey consists of:
Map: 2011-1
Narrative: VOL 57
Corner Rpt: PGS 22765-76

DOUGLAS COUNTY
SURVEYOR

LEGAL SUBDIVISION	OFFICIAL ACRES
SECTION 19	
NE 1/4 NE 1/4	39.93
NW 1/4 NE 1/4	40.08
SW 1/4 NE 1/4	40.03
SE 1/4 NE 1/4	39.88
NE 1/4 SE 1/4	40.06
NW 1/4 SE 1/4	39.94
TOTAL AREA	239.92
FEDERAL INTEREST LAND RESURVEYED	



A history of surveys is contained in the field notes.

This plat represents the dependent resurvey of a portion of the subdivisional lines, designed to restore the corners in their true original locations according to the best available evidence, and the subdivision of section 19, T. 23 S., R. 5 W., Willamette Meridian, Oregon.

Official area based on the measurements of this survey have been returned for Federal interest land where indicated. Aliquot part legal subdivisions retain their aliquot characteristics and refer to precisely the same land as that which was previously identified by its original survey or description. A lot can only be subdivided by survey or supplemental plat. Except as indicated hereon, the lottings and areas are as shown on the plat approved June 30, 1853.

Survey executed by A. Bert Skeesick, Cadastral Surveyor, beginning May 4, 2010, and completed June 7, 2010, pursuant to Special Instructions dated April 5, 2010, under Group Number 2315, Oregon.

LEGEND

- ◊ Original corner previously remonumented
- ◆ Original corner remonumented this survey
- Corner previously established or reestablished
- Corner established or reestablished this survey
- () Calculated bearing and distance

UNITED STATES DEPARTMENT OF THE INTERIOR
BUREAU OF LAND MANAGEMENT

Portland, Oregon

This plat is strictly conformable to the approved field notes, and the survey, having been correctly executed in accordance with the requirements of law and the regulations of this Bureau, is hereby accepted.

For the Director

Mary J. M. Hentel

Chief Cadastral Surveyor of Oregon

November 16, 2011

Date

OFFICIALLY FILED: 12/15/2011