

TOWNSHIP 23 SOUTH, RANGE 5 WEST, OF THE WILLAMETTE MERIDIAN, OREGON

DEPENDENT RESURVEY AND SUBDIVISION OF SECTIONS

SHEET 1 OF 2

FILED

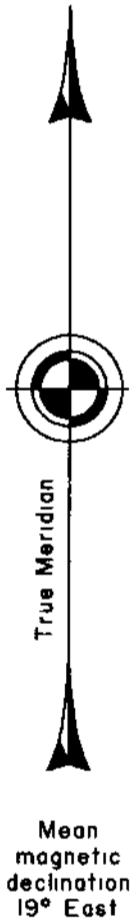
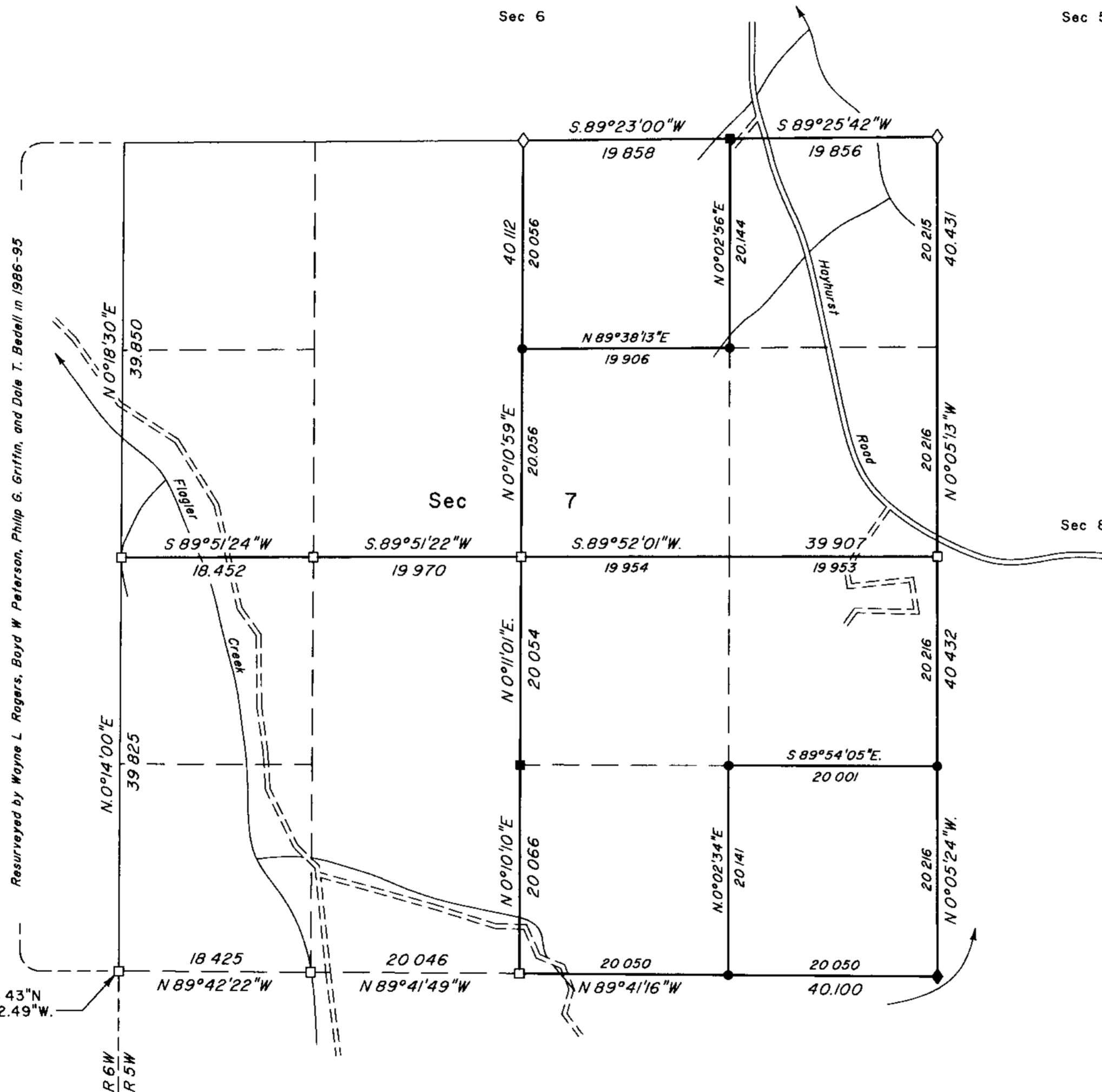
Date: 4-3-2000 By: JC

This survey consists of:

Map:
Narrative: ✓ 53

Corner Rpt: Pgs. 202, 217, 20293

DOUGLAS COUNTY SURVEYOR



Latitude 43°34'38.43"N
 Longitude 123°20'42.49"W
 (NAD 1927)

Resurveyed by Wayne L. Rogers, Boyd W. Peterson, Philip G. Griffin, and Dale T. Bedell in 1986-95

A history of surveys is contained in the field notes.

This plat represents a dependent resurvey of a portion of the subdivisional lines, T 23 S., R. 5 W., Willamette Meridian, Oregon, designed to restore the corners in their true original locations according to the best available evidence, and the subdivision of sections 7 and 21

Measured distances and directions have been adjusted by Cadastral Measurement Management (CMM), computer software that incorporates a least squares adjustment routine. The adjusted bearings and distances are reported to the nearest second and 0.001 chain.

The lottings and areas are as shown on the plats approved June 30, 1853 and December 11, 1857.

The survey was executed by Wayne L. Rogers and Bryan S. Seibold, Cadastral Surveyors, beginning July 21, 1997, and completed October 16, 1997, pursuant to Special Instructions dated May 20, 1997, under Group Number 1832, Oregon.

Timber in this area consists of fir, cedar, hemlock, alder, maple, oak, chinquapin, pine, ash, yew and madrone.

LEGEND	
◇	Original corner previously remonumented
◆	Original corner remonumented this survey
□	Corner previously established or reestablished
■	Corner previously established; remonumented this survey
●	Corner established this survey

UNITED STATES DEPARTMENT OF THE INTERIOR
 BUREAU OF LAND MANAGEMENT

Portland, Oregon January 5, 2000

This plat is strictly conformable to the approved field notes, and the survey, having been correctly executed in accordance with the requirements of law and the regulations of this Bureau, is hereby accepted.

For the Director

Chief Cadastral Surveyor of Oregon

